

THIS MAP WAS PREPARED FOR ASSESSMENT PURPOSE ONLY.

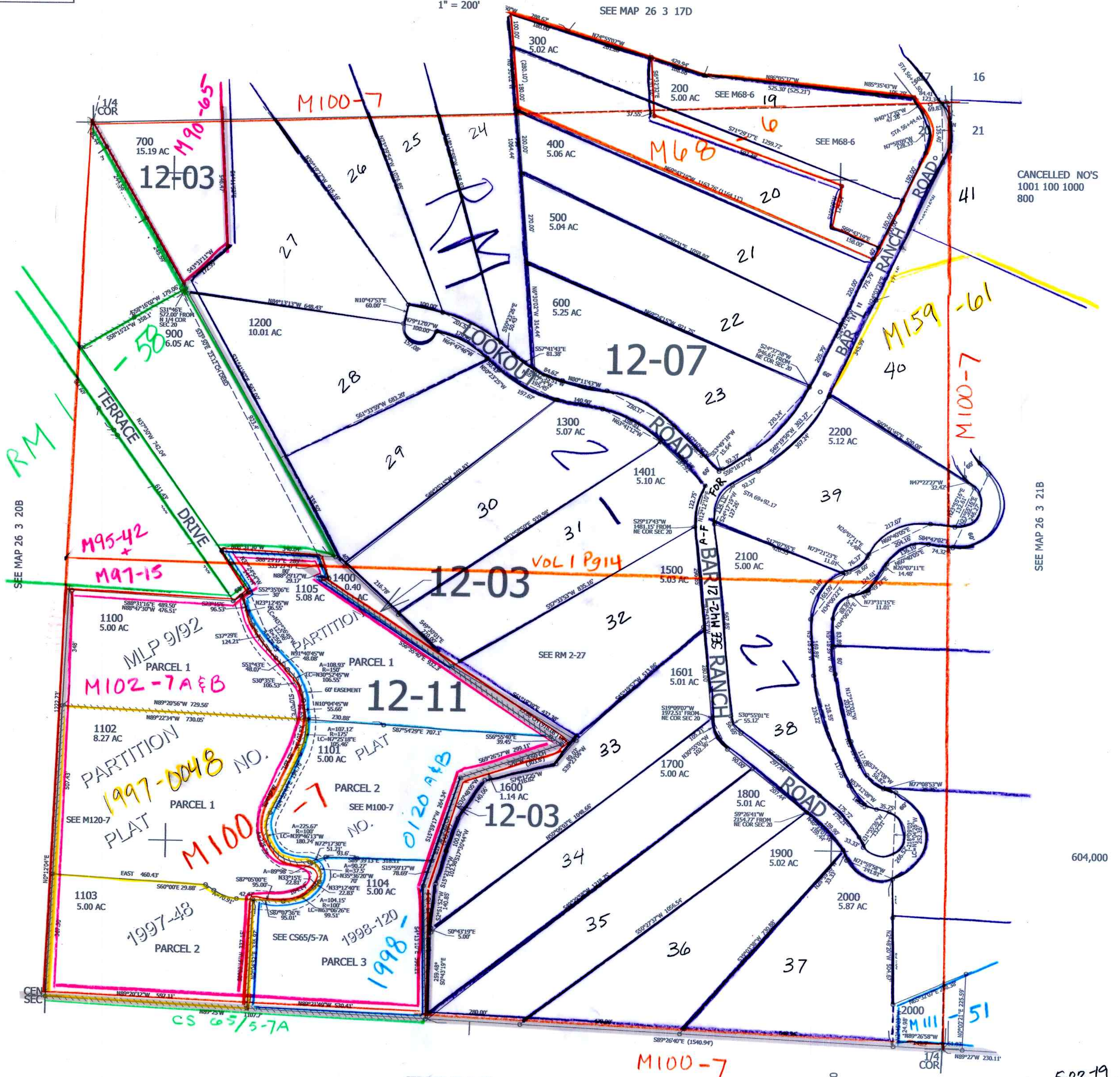
NE1/4 SEC.20 T.26S. R.3W. W.M. DOUGLAS COUNTY

REVISED ON 5-15-19

26 3 20A

1" = 200'

SEE MAP 26 3 17D



CANCELLED NO'S 1001 100 1000 800

SEE MAP 26 3 21B

604,000

SEE MAP 26 3 20

4,237,000

5-22-19
26 3 20A