

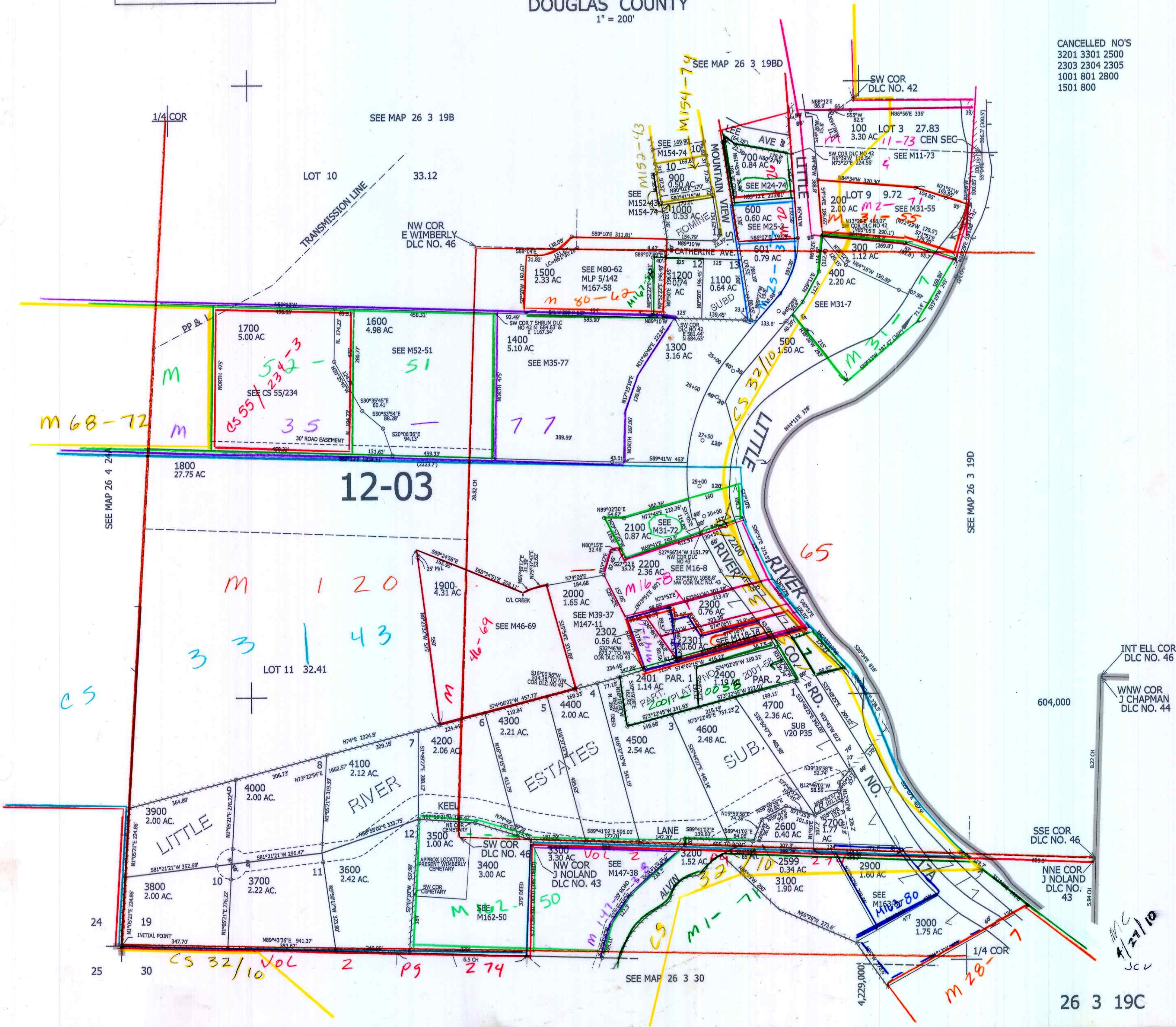
THIS MAP WAS PREPARED FOR ASSESSMENT PURPOSE ONLY.

SW1/4 SEC.19 T.26S. R.3W. W.M.  
DOUGLAS COUNTY  
1" = 200'

REVISED ON  
1-24-22

26 3 19C

CANCELLED NO'S  
3201 3301 2500  
2303 2304 2305  
1001 801 2800  
1501 800



SEE MAP 26 3 19D

SEE MAP 26 4 24

INT ELL COR  
DLC NO. 46

WNW COR  
J CHAPMAN  
DLC NO. 44

604,000

SSE COR  
DLC NO. 46

NNE COR  
J NOLAND  
DLC NO. 43

SEE MAP 26 3 30

26 3 19C

M 171-72  
M 172-73  
M 173-74  
M 174-75  
M 175-76  
M 176-77  
M 177-78  
M 178-79  
M 179-80