

THIS MAP WAS PREPARED FOR ASSESSMENT PURPOSE ONLY.

NW1/4 SEC.19 T.26S. R.3W. W.M. DOUGLAS COUNTY

REVISED ON 4-15-10

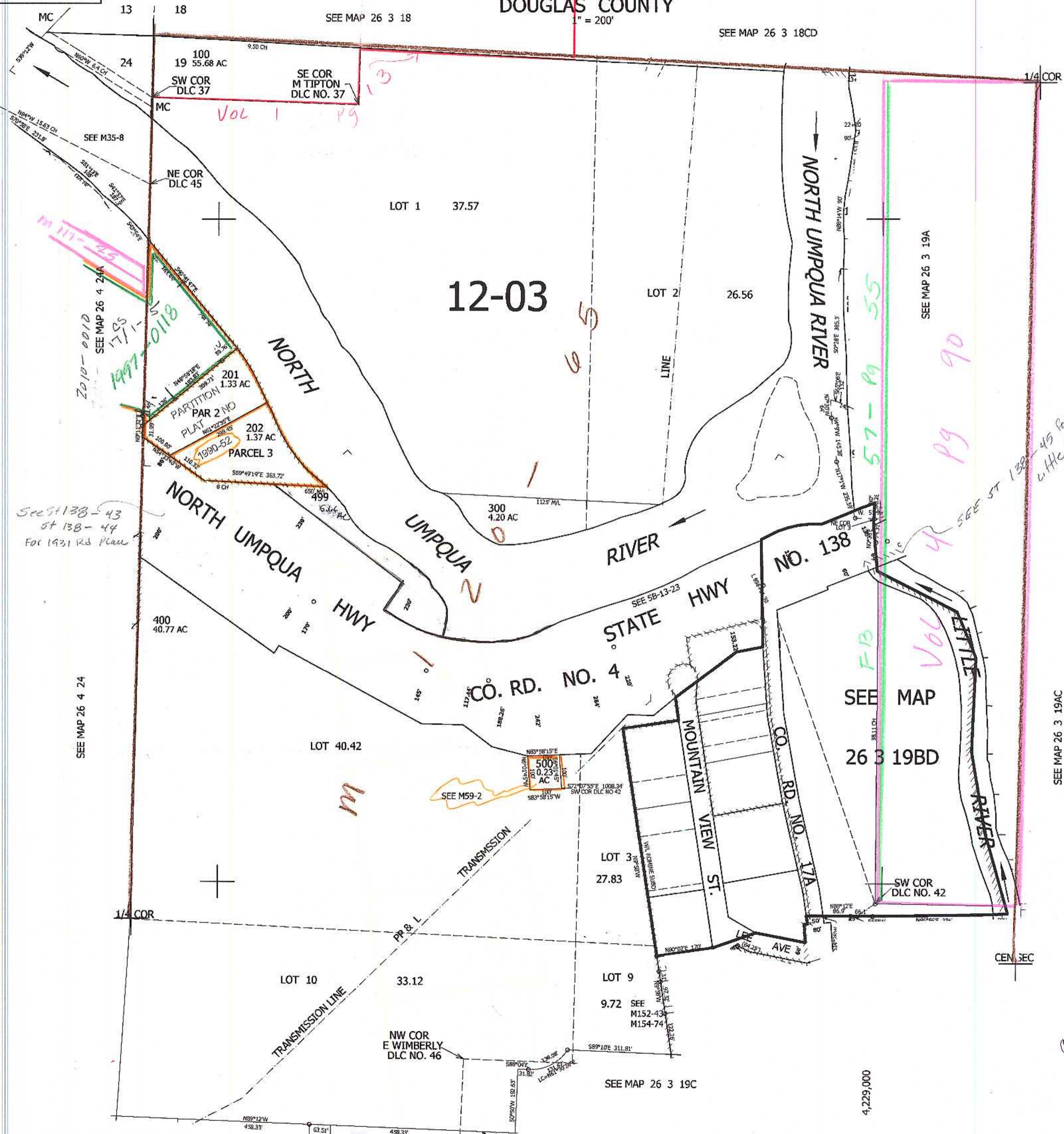
26 3 19B & INDEX

SEE MAP 26 3 18

1" = 200'

SEE MAP 26 3 18CD

CANCELLED NO'S 200 203



See 1138-43
St 138-44
For 1931 Rd Plan

SEE MAP 26 4 24

SEE MAP 26 3 19A

SEE MAP 26 3 19BD

SEE MAP 26 3 19AC

SEE MAP 26 3 19C

AM 4/27/10 JCV

26 3 19B & INDEX

604,000

4,229,000