

THIS MAP WAS PREPARED FOR ASSESSMENT PURPOSE ONLY.

SE1/4 SE1/4 SEC.18 T.26S. R.3W. W.M.
DOUGLAS COUNTY

REVISED ON
4-11-18

26 3 18DD

1" = 100'

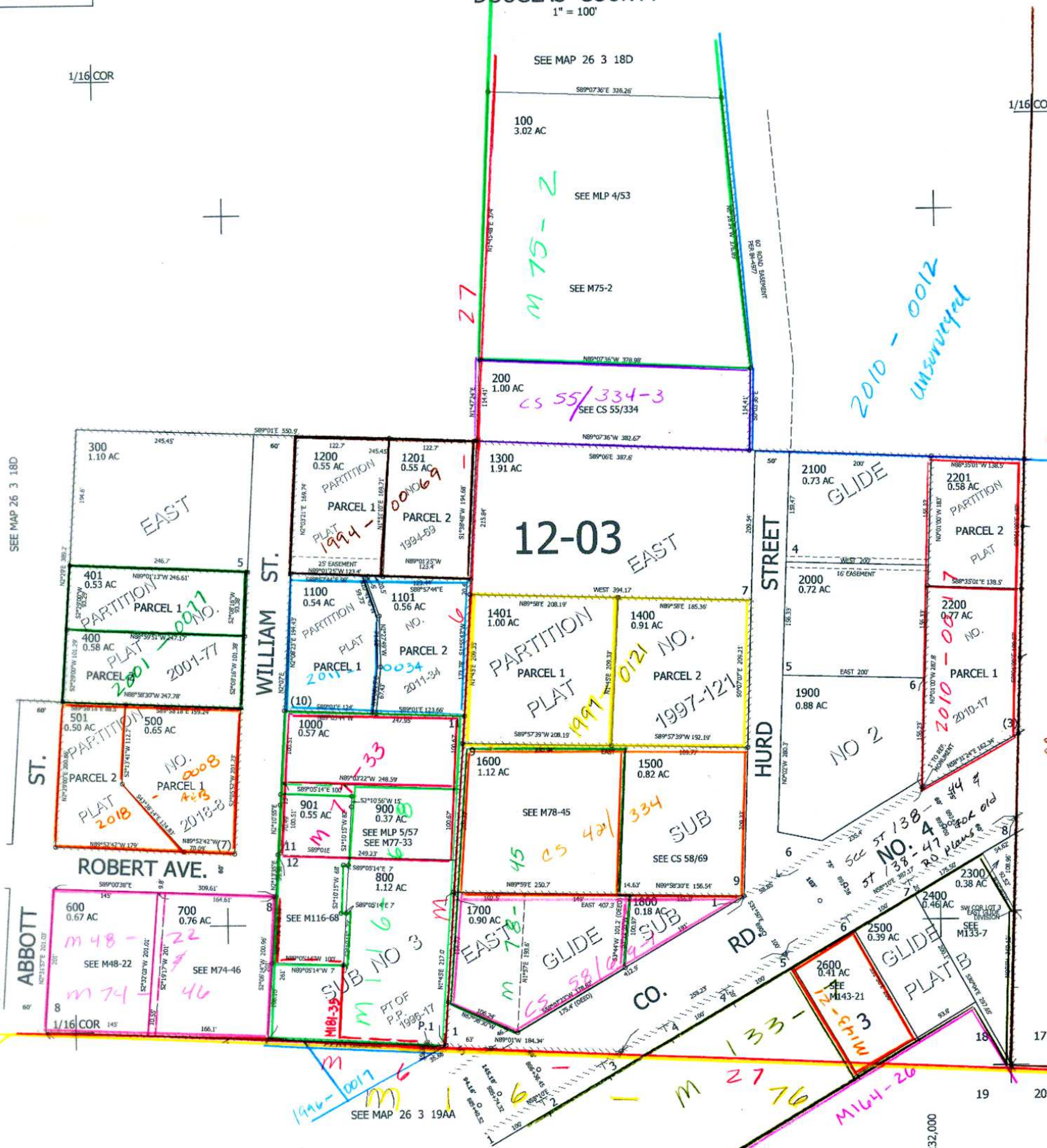
1/16 COR

1/16 COR

CANCELLED NO'S
801 802 902
2700

SEE MAP 26 3 18D

SEE MAP 26 3 17CC



606,500

5/19/20
JCL

26 3 18DD