

SE1/4 SW1/4 SEC.18 T.26S. R.3W. W.M.  
DOUGLAS COUNTY

REVISED ON  
11-13-92

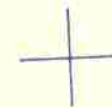
26 3 18CD

THIS MAP WAS PREPARED FOR  
ASSESSMENT PURPOSE ONLY.

1"=100'



CANCELLED NO.S  
600

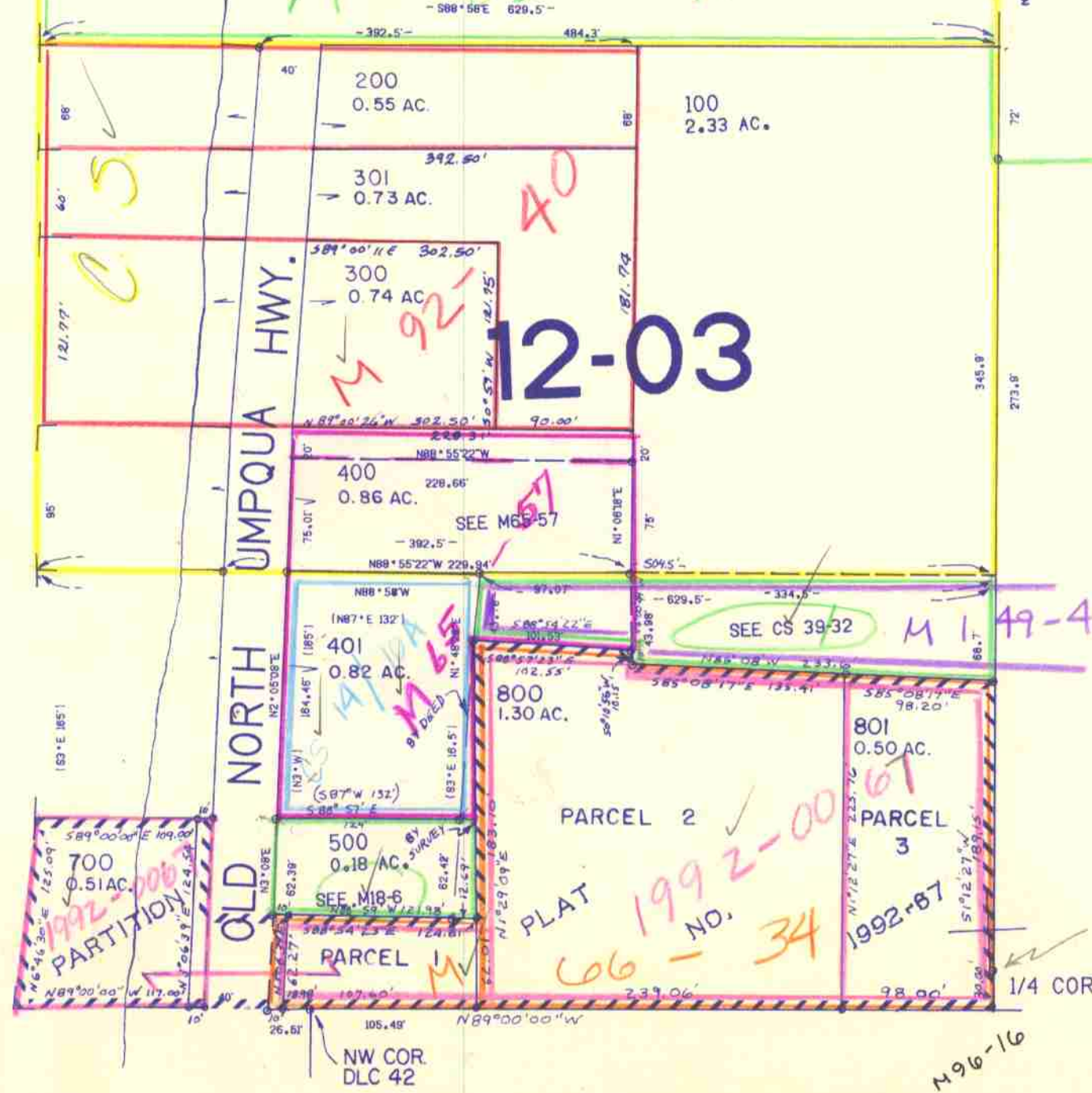


SEE MAP 26 3 18

SEE MAP 26 3 18

SEE MAP 26 3 18DC

NORTH UMPQUA RIVER  
NORTH UMPQUA HWY.  
OLD NORTH UMPQUA HWY.



36/31

85-72

12-03

SEE CS 39-32 M 149-48

PARCEL 2  
PARCEL 3  
PLAT 1992-0067  
NO. 34  
606-34

1992-0067  
PARTITION



SEE MAP 26 3 19B

M 96-16

1.308.500

26 3 18CD

11/92 BC