

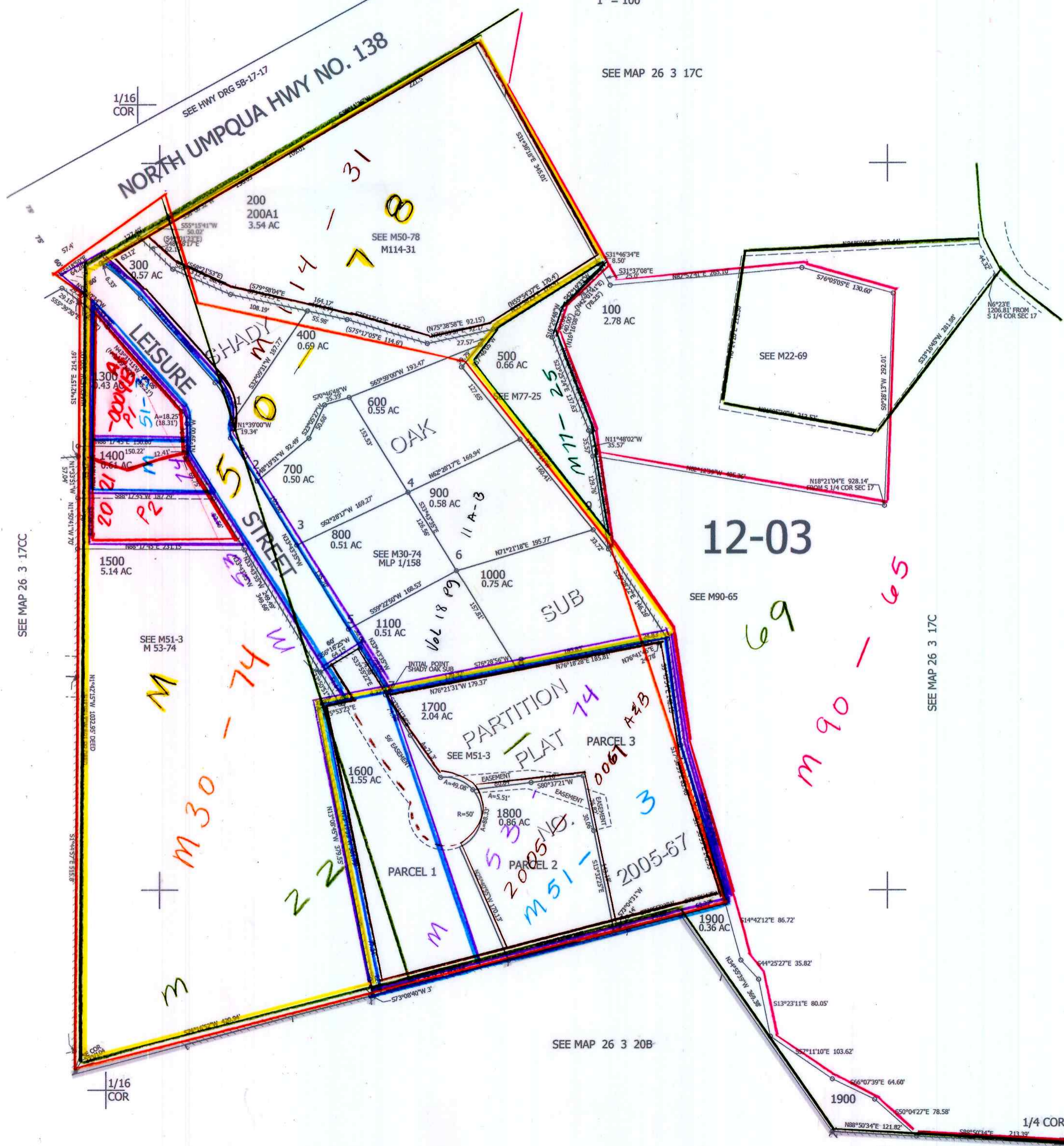
THIS MAP WAS PREPARED FOR ASSESSMENT PURPOSE ONLY.

SE1/4 SW1/4 SEC.17 T.26S. R.3W. W.M. DOUGLAS COUNTY

1" = 100'

REVISED ON 6-27-17

26 3 17CD



SEE MAP 26 3 17C

1/16 COR

CANCELLED NO'S
1200 1701 1702
1801 1802

12-03

SEE M90-65

SEE MAP 26 3 17C

606,500

SEE MAP 26 3 20B

1/16 COR

1/4 COR

26 3 17CD

cm
1/30/17
scv