

NE1/4 SEC. 17 T.26S. R.3W. W.M.  
DOUGLAS COUNTY

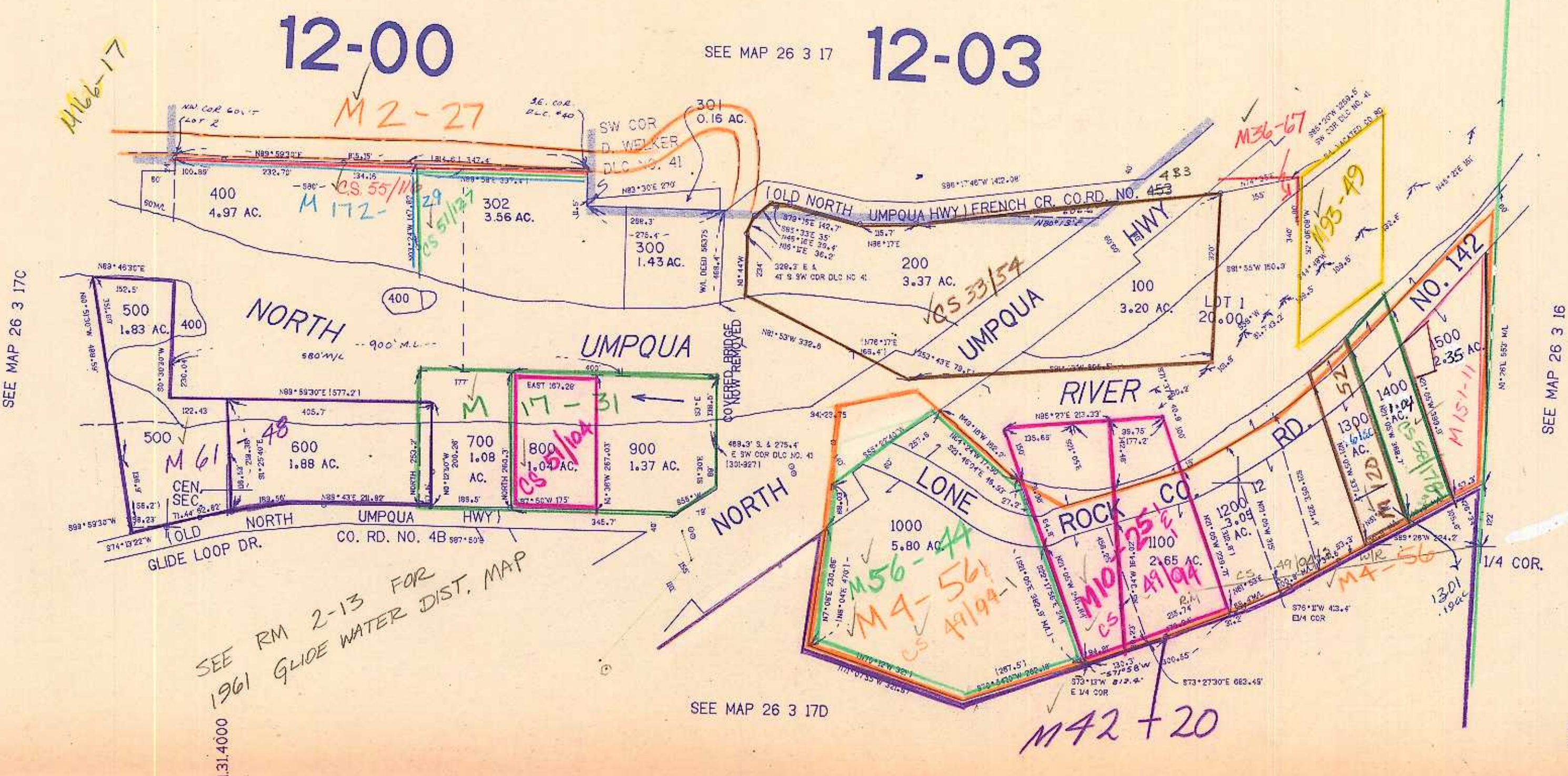
26 3 17A

THIS MAP WAS PREPARED FOR  
ASSESSMENT PURPOSE ONLY.

1"=200'

APPROX  
1/4 COR.

8 9  
17 16



Vol 3 Pg 282

SEE RM 2-13 FOR  
1961 GLIDE WATER DIST. MAP

609.000

26 3 17A

alex  
CWO