

THIS MAP WAS PREPARED FOR ASSESSMENT PURPOSE ONLY.

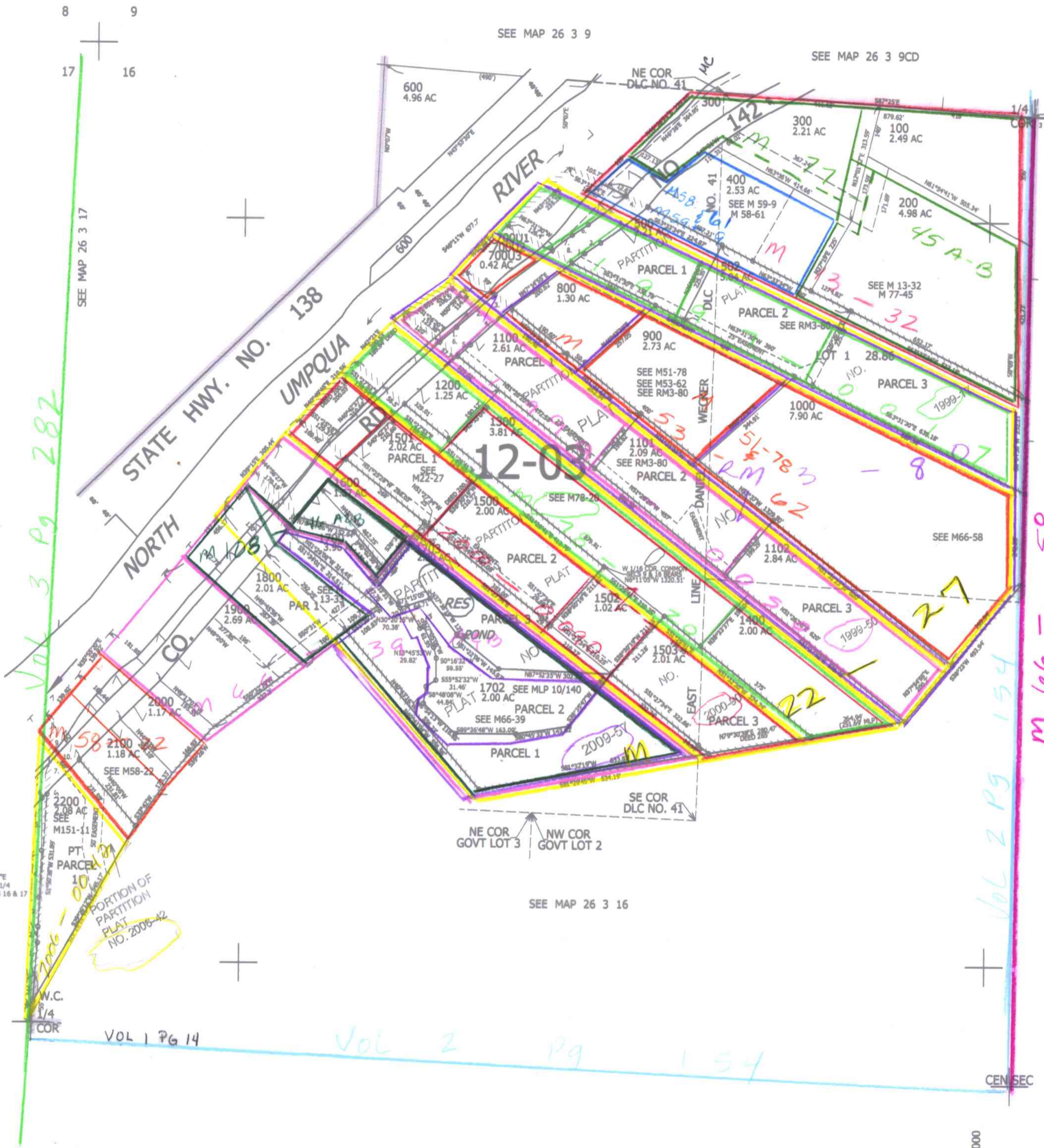
NW1/4 SEC.16 T.26S. R.3W. W.M. DOUGLAS COUNTY

REVISED ON 12-4-13

26 3 16B

1" = 200'

CANCELLED NOS 1701 501 2201



SEE MAP 26 3 17A

SEE MAP 26 3 17

SEE MAP 26 3 9

SEE MAP 26 3 9CD

SEE MAP 26 3 16

SEE MAP 26 3 16

- PP 1999-17
1. R=462.78'
  2. LC=52°58'15"E 41.26'
  3. R=1283.89'
  4. LC=N51°58'50"E 158.72'
  5. R=1223.89'
  6. LC=S52°33'07"W 127'
  7. R=522.78'
  8. LC=S51°31'36"W 72.92'
  9. R=563°31'30"E 64.92'

- PP 1999-50
1. N50°56'19"E 60.2'
  2. LC=N48°48'29"E 143.57'
  3. S50°59'59"E 60.52'
  4. LC=S48°41'30"W 156.11'
  5. S50°56'19"W 47.03'
  6. N51°26'20"E 61.43'

- PARCEL 2200
- P.O. B. BEARS N1°50'38"E 66.15' FR W.C. TO THE 1/4 COR COMMON TO SEC'S 16 & 17
1. N3°12'12"E 87.72'
  2. N0°55'57"W 42.96'
  3. N0°00'47"W 79.16'
  4. N1°07'44"E 125.88'
  5. N2°30'58"W 117.48'
  6. N40°43'09"E 20.82'
  7. N1°50'38"E 94.34'
  8. N1°50'38"E 132.6'
  9. S40°08'E 85.28'
  10. S40°08'E 60.67'

PORTION OF PARTITION PLAT NO. 2008-42

On 1/25/14

26 3 16B