

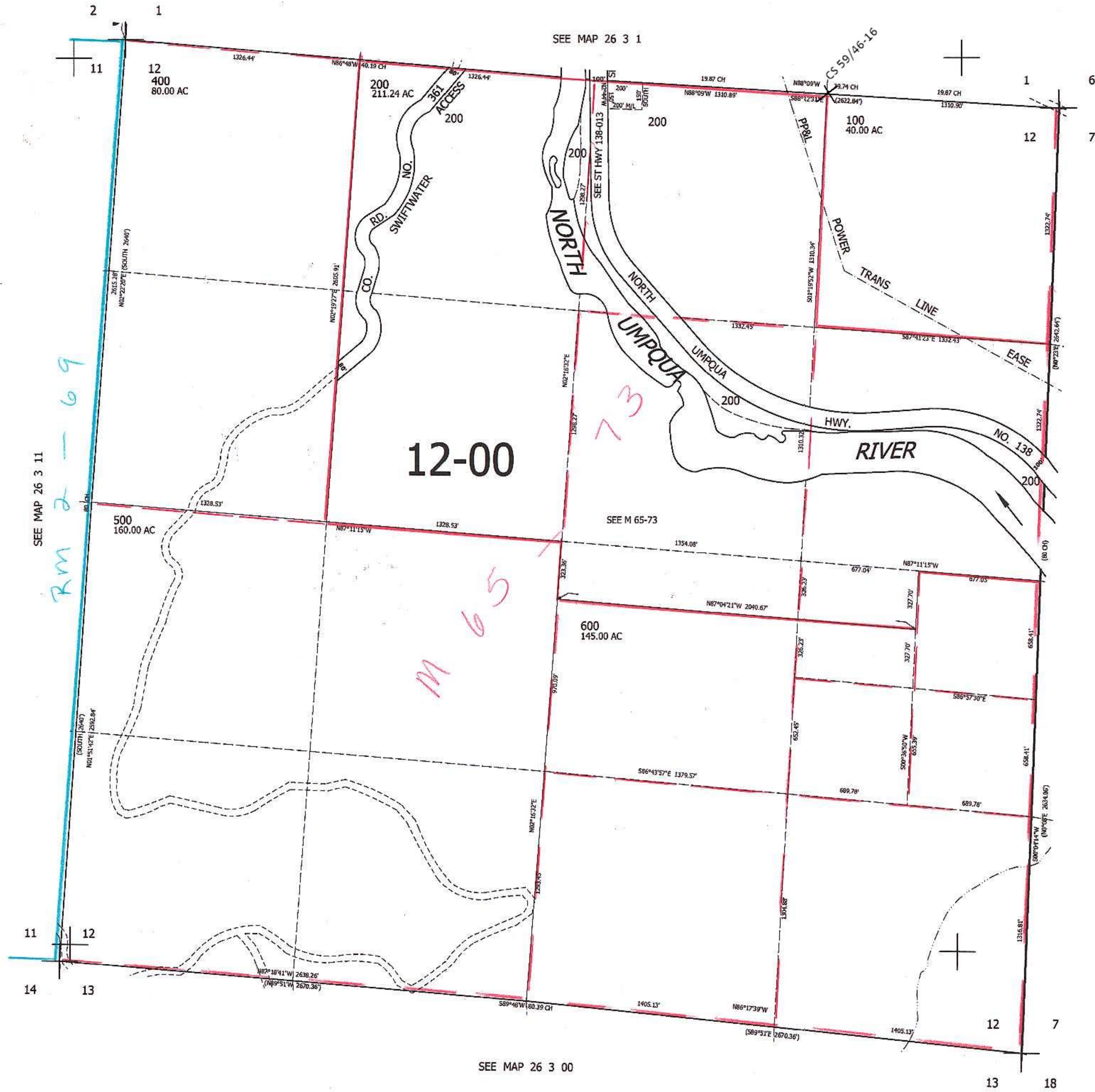
THIS MAP WAS PREPARED FOR ASSESSMENT PURPOSE ONLY.

SEC.12 T.26S. R.3W. W.M.
DOUGLAS COUNTY

1" = 400'

REVISED ON
11-17-14

26 3 12



CANCELLED NOS
300

SEE MAP 26 2 00

611,000

am
11/19/14

26 3 12