

THIS MAP WAS PREPARED FOR ASSESSMENT PURPOSE ONLY.

SE1/4 NW1/4 SEC.11 T.26S. R.3W. W.M.
DOUGLAS COUNTY

REVISED ON
12-12-17

26 3 11BD

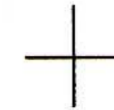
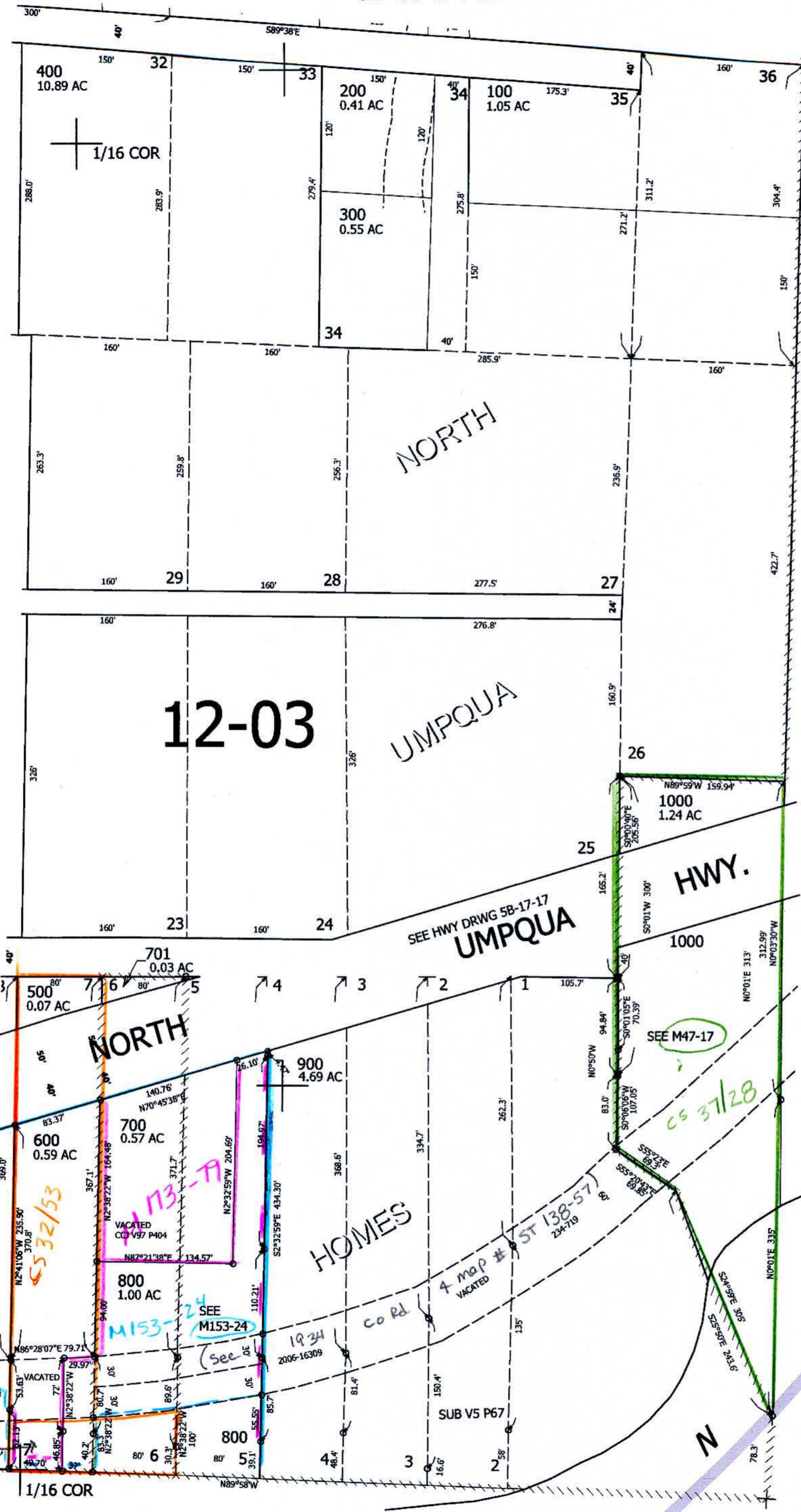
1" = 100'

SEE MAP 26 3 11BA

SEE MAP 26 3 11BC

SEE MAP 26 3 11

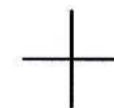
SEE MAP 26 3 11



1/16 COR

CANCELLED NOS
601 702

614,000



RIVER

UMPQUA

CEN/SEC

4,250,500

12/12/17

26 3 11BD