

NE1/4 NW1/4 SEC.11 T.26S. R.3W. W.M.  
DOUGLAS COUNTY

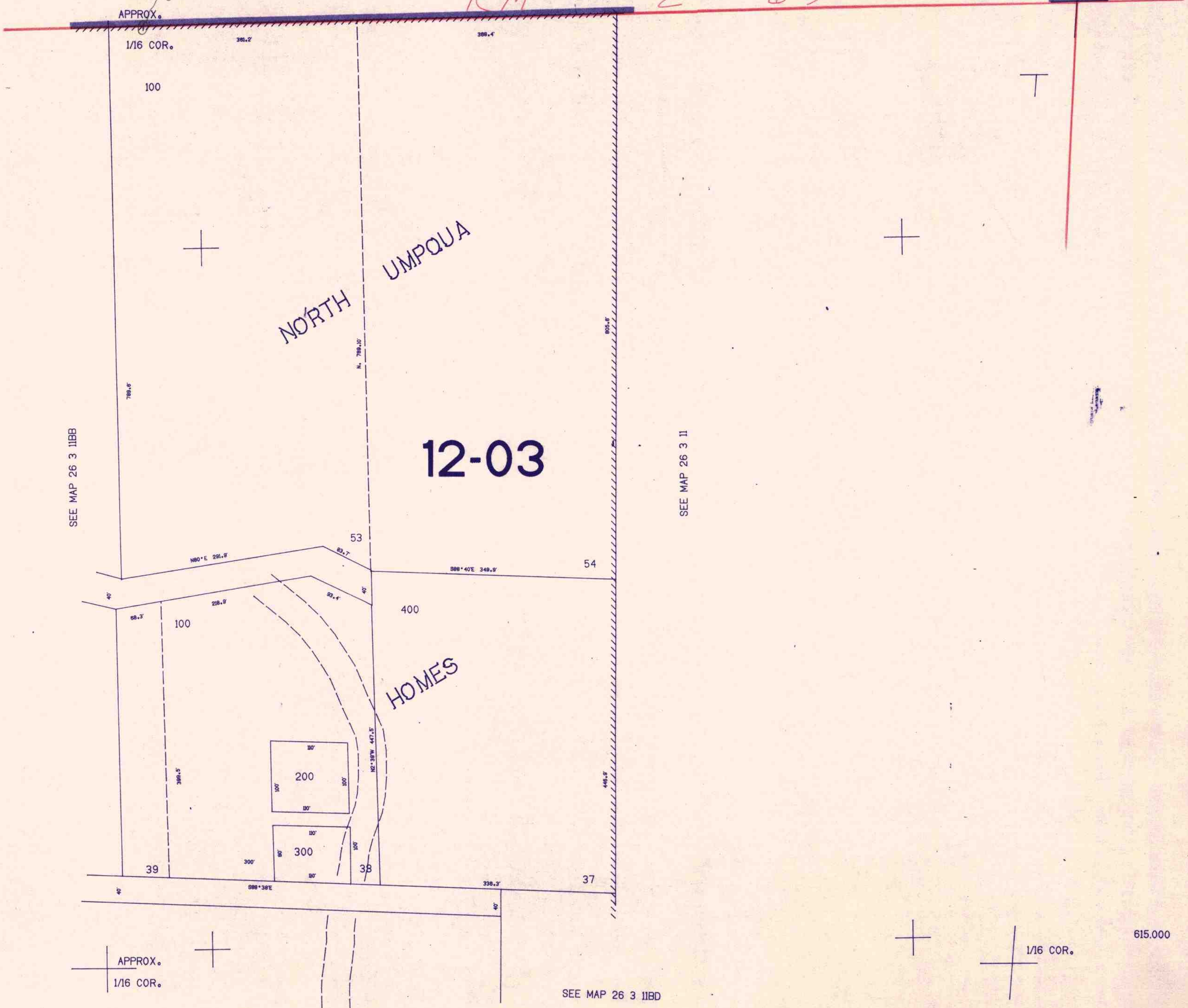
26 3 11BA

THIS MAP WAS PREPARED FOR  
ASSESSMENT PURPOSE ONLY.

1"=100'

M 98-61  
98-10  
1/4 COR.

RM SEE MAP 26 3 2 2-69



SEE MAP 26 3 11BB

SEE MAP 26 3 11

12-03

NORTH UMPQUA

HOMES

APPROX.  
1/16 COR.

1/16 COR.

SEE MAP 26 3 11BD

26 3 11BA

1329.500

615.000

10/27/98