

THIS MAP WAS PREPARED FOR
ASSESSMENT PURPOSE ONLY.

SUPPLEMENTAL MAP NO. 1
IN
SW1/4 NE1/4 SEC. II T.26S. R.3W. W.M.
DOUGLAS COUNTY
1"=50'
CONDOMINIUM

26 3 IIAC
SUPPLEMENTAL
MAP NO. 1

CANCELLED NO'S

UNIT 1

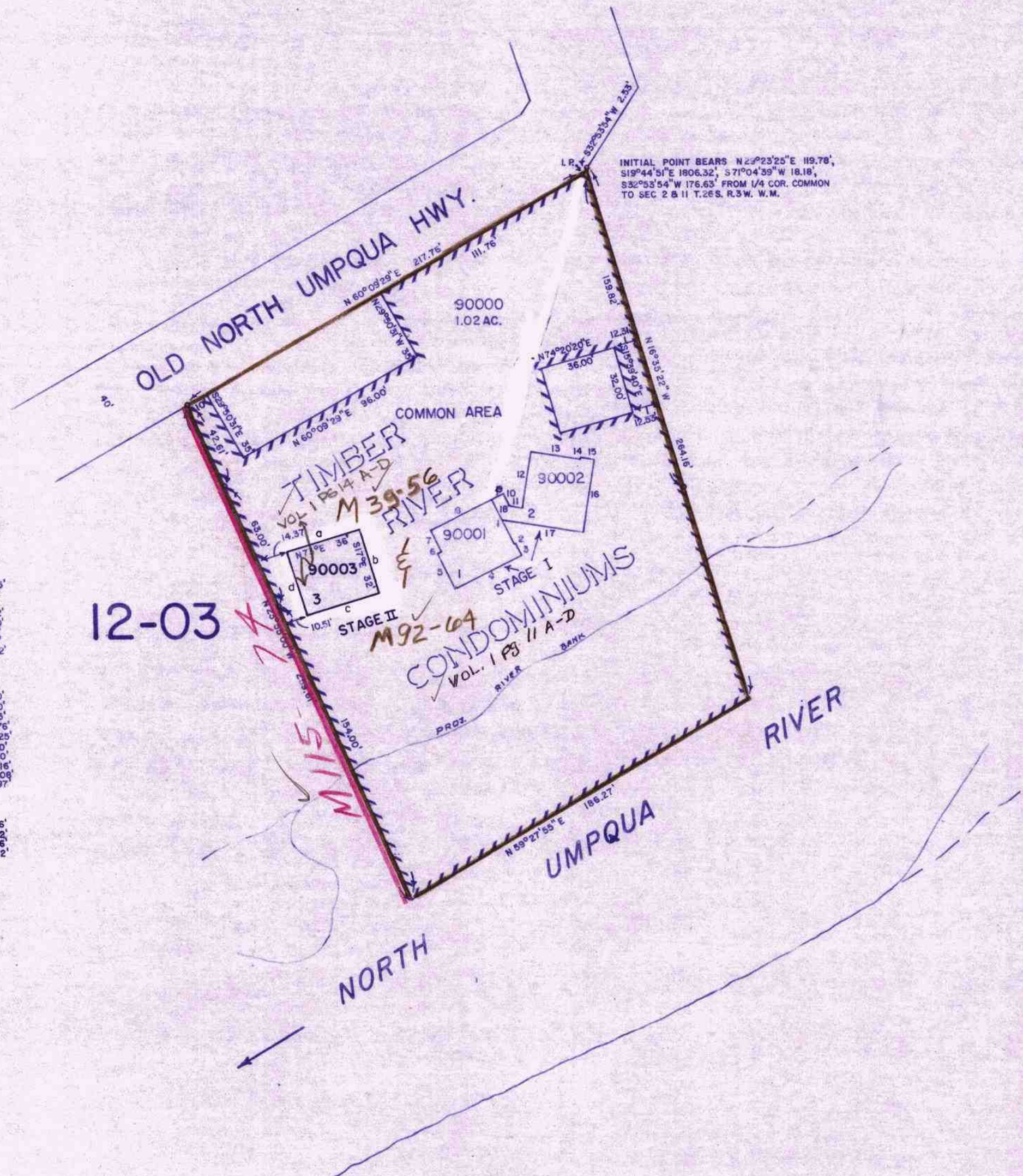
1. S 26°26'06" E 24.25'
2. N 63°53'04" E 0.50'
3. S 26°26'06" E 6.40'
4. S 63°33'04" W 35.12'
5. N 26°26'06" W 19.40'
6. N 63°53'04" E 2.00'
7. N 26°26'06" W 11.25'
8. N 63°53'04" E 32.62'

UNIT 2

9. N 63°33'33" E 6.60'
10. S 26°26'39" E 7.20'
11. S 80°53'20" E 6.25'
12. N 09°06'40" E 27.76'
13. S 80°53'20" E 24.25'
14. N 09°06'40" E 0.50'
15. S 80°53'20" E 6.40'
16. S 09°06'40" W 35.16'
17. N 80°53'20" W 40.08'
18. N 26°27'19" W 10.97'

UNIT 3

- a. N 73° 00' 00" E 36'
- b. S 17° 00' 00" E 32'
- c. S 73° 00' 00" W 36'
- d. N 17° 00' 00" E 32'



INITIAL POINT BEARS N 25°23'25" E 119.78',
S 19°44'51" E 1806.32', S 71°04'39" W 18.18',
S 32°53'54" W 176.63' FROM 1/4 COR. COMMON
TO SEC 2 & 11 T.26S. R.3W. W.M.

12-03

NORTH

26 3 IIAC
SUPPLEMENTAL
MAP NO. 1

84
7-88