

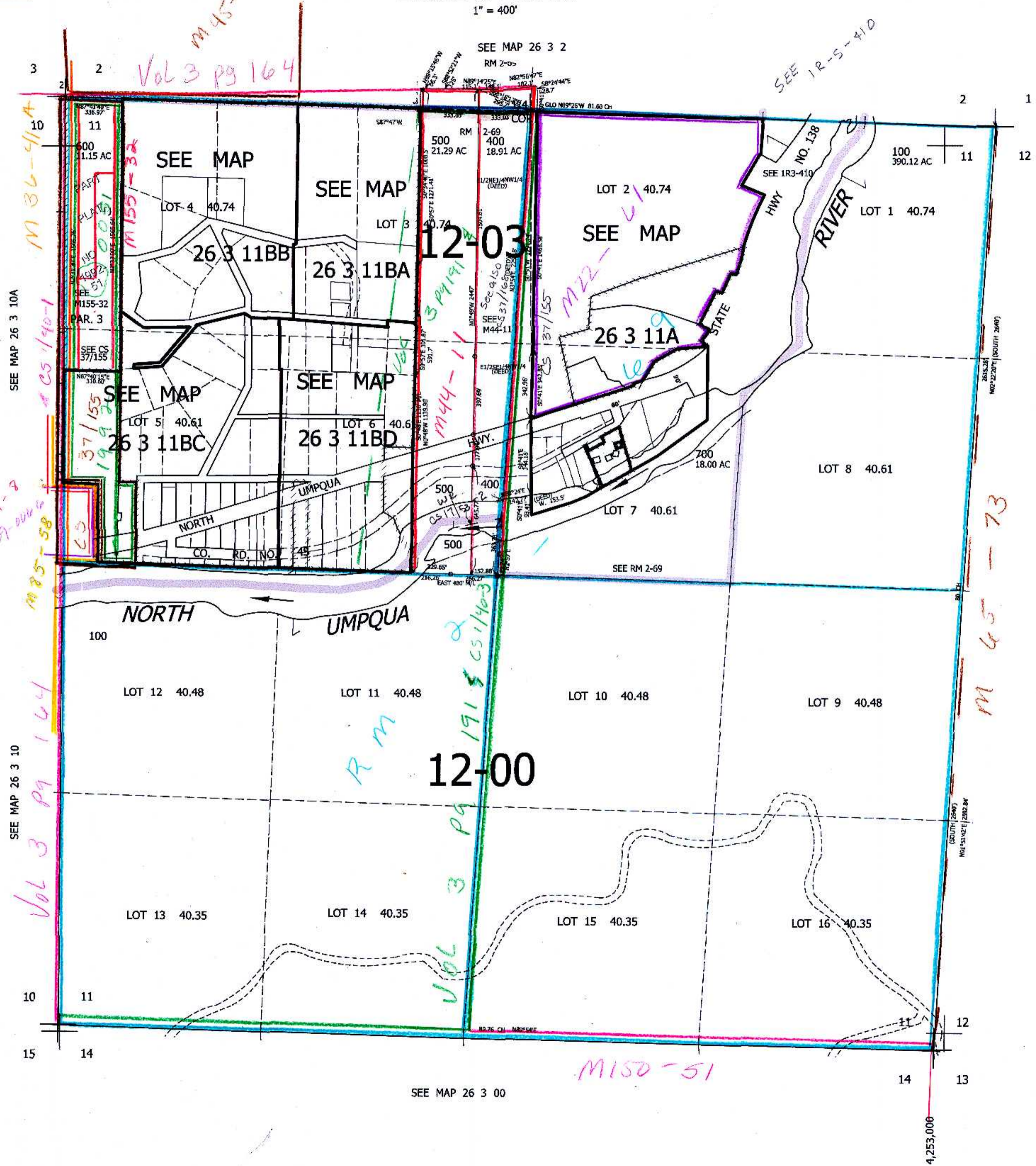
THIS MAP WAS PREPARED FOR ASSESSMENT PURPOSE ONLY.

SEC.11 T.26S. R.3W. W.M. DOUGLAS COUNTY

REVISED ON 2-15-17

26 3 11 & INDEX

1" = 400'



CANCELLED NOS 601 602 200 300

SEE MAP 26 3 12

611,000

am 5/04/17

26 3 11 & INDEX

4,253,000