

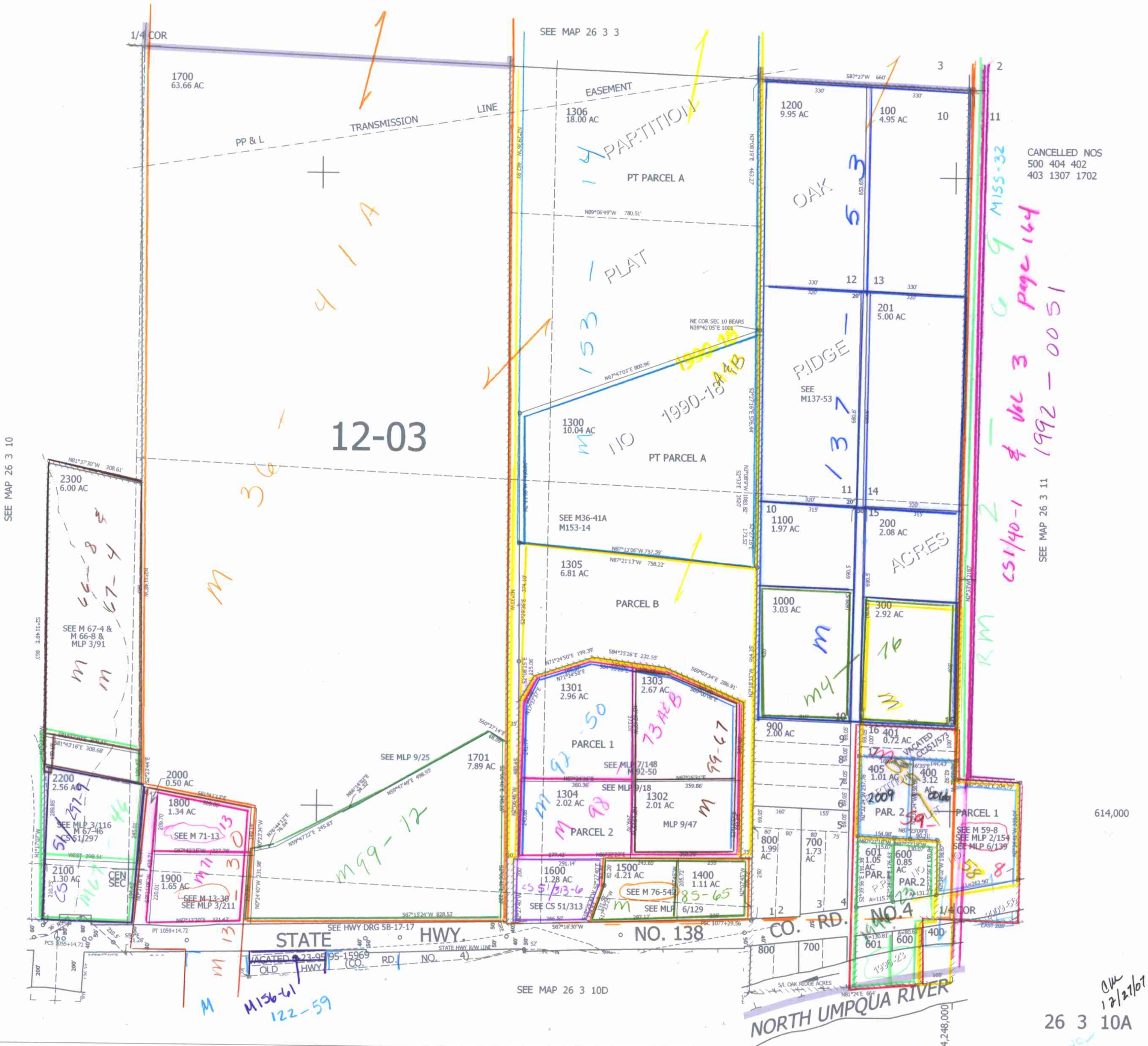
THIS MAP WAS PREPARED FOR ASSESSMENT PURPOSE ONLY.

NE1/4 SEC.10 T.26S. R.3W. W.M.  
DOUGLAS COUNTY

1" = 200'

REVISED ON  
3-29-11

26 3 10A



CANCELLED NOS  
500 404 402  
403 1307 1702

*Handwritten notes:*  
MISS-32  
Page 164  
Vol 3  
1992-0051  
SEE MAP 26 3 11

614,000

*Handwritten note:*  
12/27/07

26 3 10A