

SECTION 9 T.26S. R.3W. W.M.
DOUGLAS COUNTY

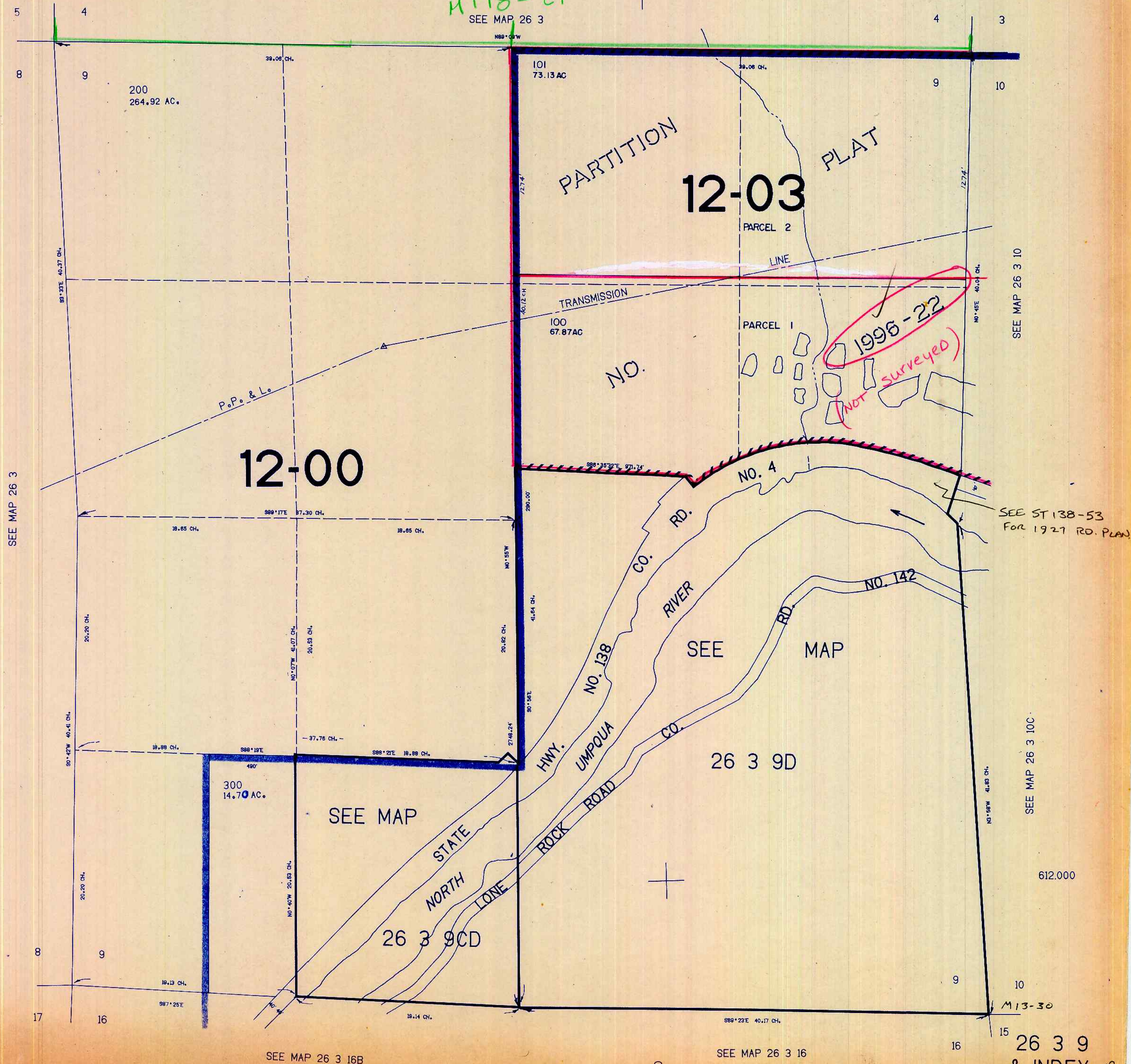
REVISED ON
3-7-96

26 3 9
& INDEX

THIS MAP WAS PREPARED FOR
ASSESSMENT PURPOSE ONLY.

1"=400'

H 178-27
SEE MAP 26 3



26 3 9
& INDEX