

THIS MAP WAS PREPARED FOR ASSESSMENT PURPOSE ONLY.

SW1/4 SEC.1 T.26S. R.3W. W.M.  
DOUGLAS COUNTY  
1" = 200'

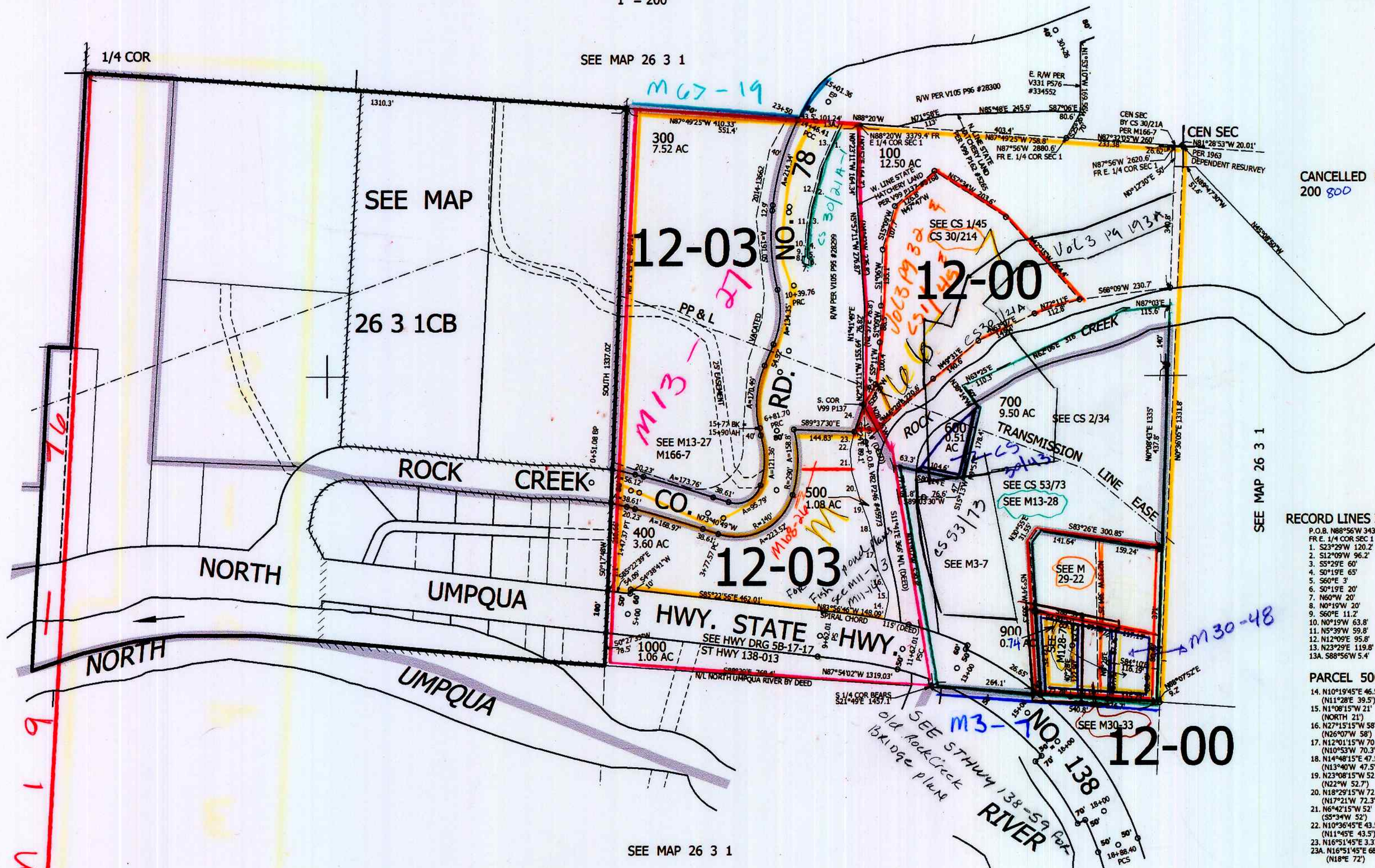
REVISED ON  
11-17-14

26 3 1C  
& INDEX

SEE MAP 26 3 2

SEE MAP 26 3 1

CANCELLED NOS  
200 800



RECORD LINES IN R/W

- P.O.B. N88°56'W 3434.8'
- FR. E. 1/4 COR SEC 1
- 1. S23°29'W 120.2'
- 2. S12°09'W 96.2'
- 3. S5°29'E 60'
- 4. S0°19'E 65'
- 5. S60°E 3'
- 6. S0°19'E 20'
- 7. N00°W 20'
- 8. N0°19'W 20'
- 9. S60°E 11.2'
- 10. N0°19'W 63.8'
- 11. N5°39'W 59.8'
- 12. N12°09'E 95.8'
- 13. N23°29'E 119.8'
- 13A. S88°56'W 5.4'

PARCEL 500

- 14. N10°19'45"E 46.54'
- (N11°28'E 39.5')
- 15. N1°08'15"W 21'
- (NORTH 21')
- 16. N27°15'15"W 58'
- (N26°07'W 58')
- 17. N12°01'15"W 70.3'
- (N10°53'W 70.3')
- 18. N14°48'15"E 47.5'
- (N13°40'W 47.5')
- 19. N23°08'15"W 52.7'
- (N22°W 52.7')
- 20. N18°29'15"W 72.3'
- (N17°21'W 72.3')
- 21. N6°42'15"W 52'
- (S5°34'W 52')
- 22. N10°36'45"E 43.5'
- (N11°40'E 43.5')
- 23. N16°51'45"E 3.37'
- 23A. N16°51'45"E 68.64'
- (N18°E 72')

2 1  
11 12

616,000

cm. 11/17/14

26 3 1C  
& INDEX

4,256,000