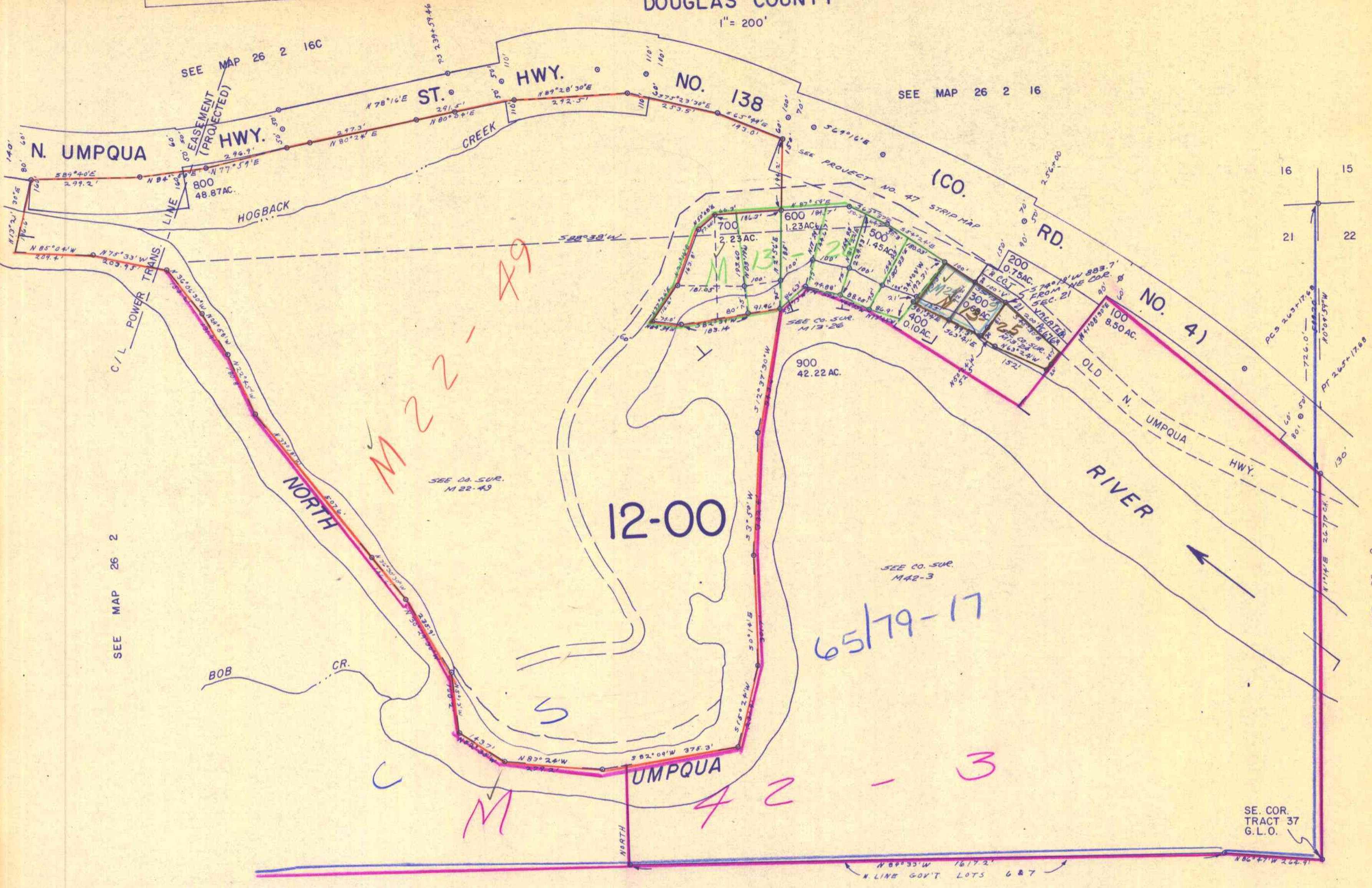


THIS MAP WAS PREPARED FOR ASSESSMENT PURPOSE ONLY.

NE 1/4 SEC 21 T.26S. R.2 W. W.M.
DOUGLAS COUNTY

1" = 200'



SEE MAP 26 2

SEE MAP 26 2

SEE MAP 26 2

APPROX.
CEN. SEC.

APPROX.
1/4 COR.