

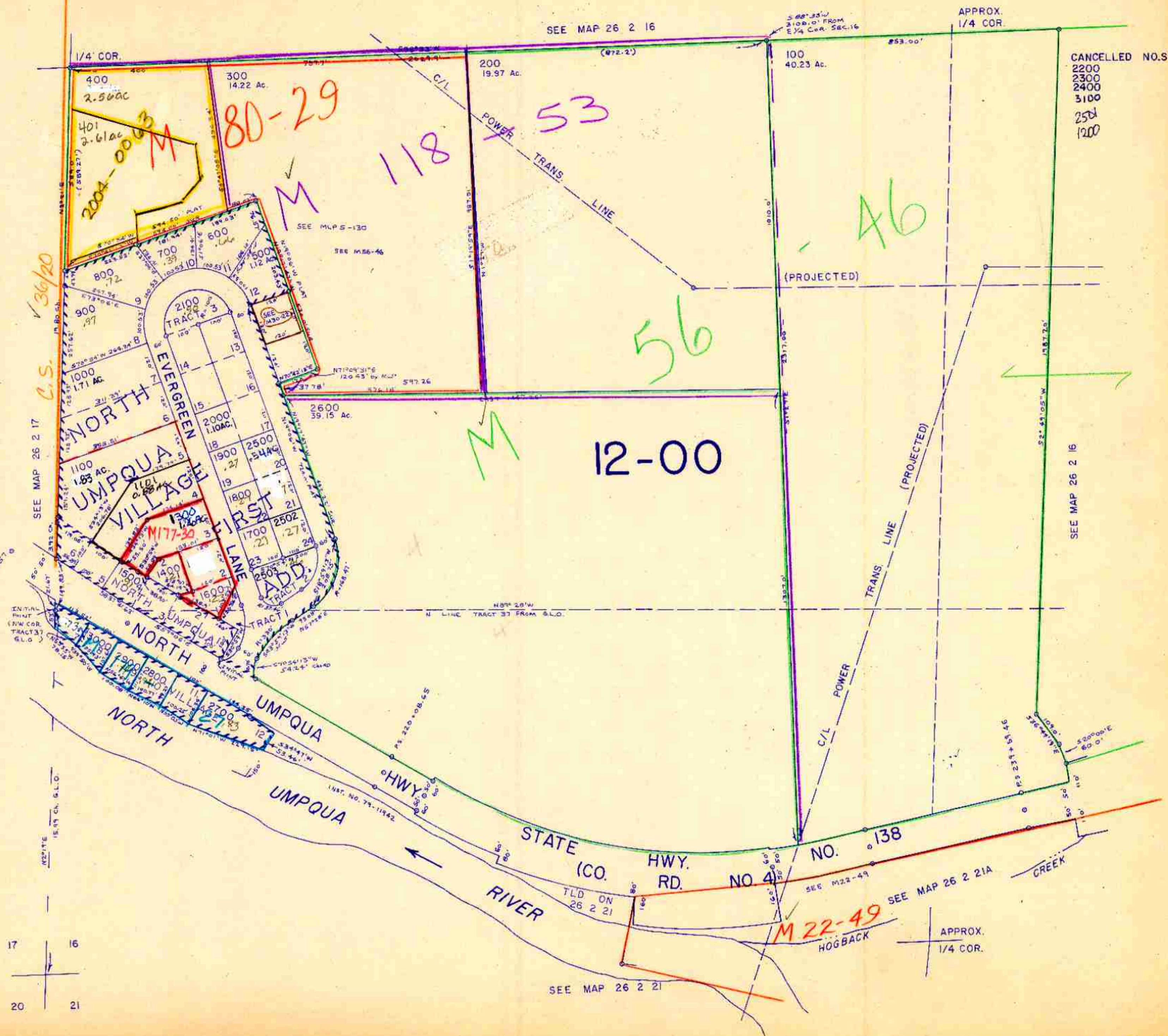
SW1/4 SEC. 16 T.26S. R. 2W. W.M.
DOUGLAS COUNTY

REVISED ON
8-14-91

26 2 16C

THIS MAP WAS PREPARED FOR
ASSESSMENT PURPOSE ONLY.

1" = 200'



M 78-64
M 73-42

36/20
C.S.

80-29

118

53

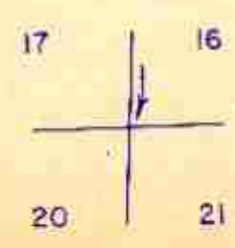
46

56

12-00

M 22-49
HOGBACK

CANCELLED NO.S
2200
2300
2400
3100
2501
1200



26 2 16C

Blair