

HOMESTEAD DETAIL T.26S. R.2E. W.M.
DOUGLAS COUNTY

REVISED ON
4-20-21

26 2E 00
DETAIL MAP

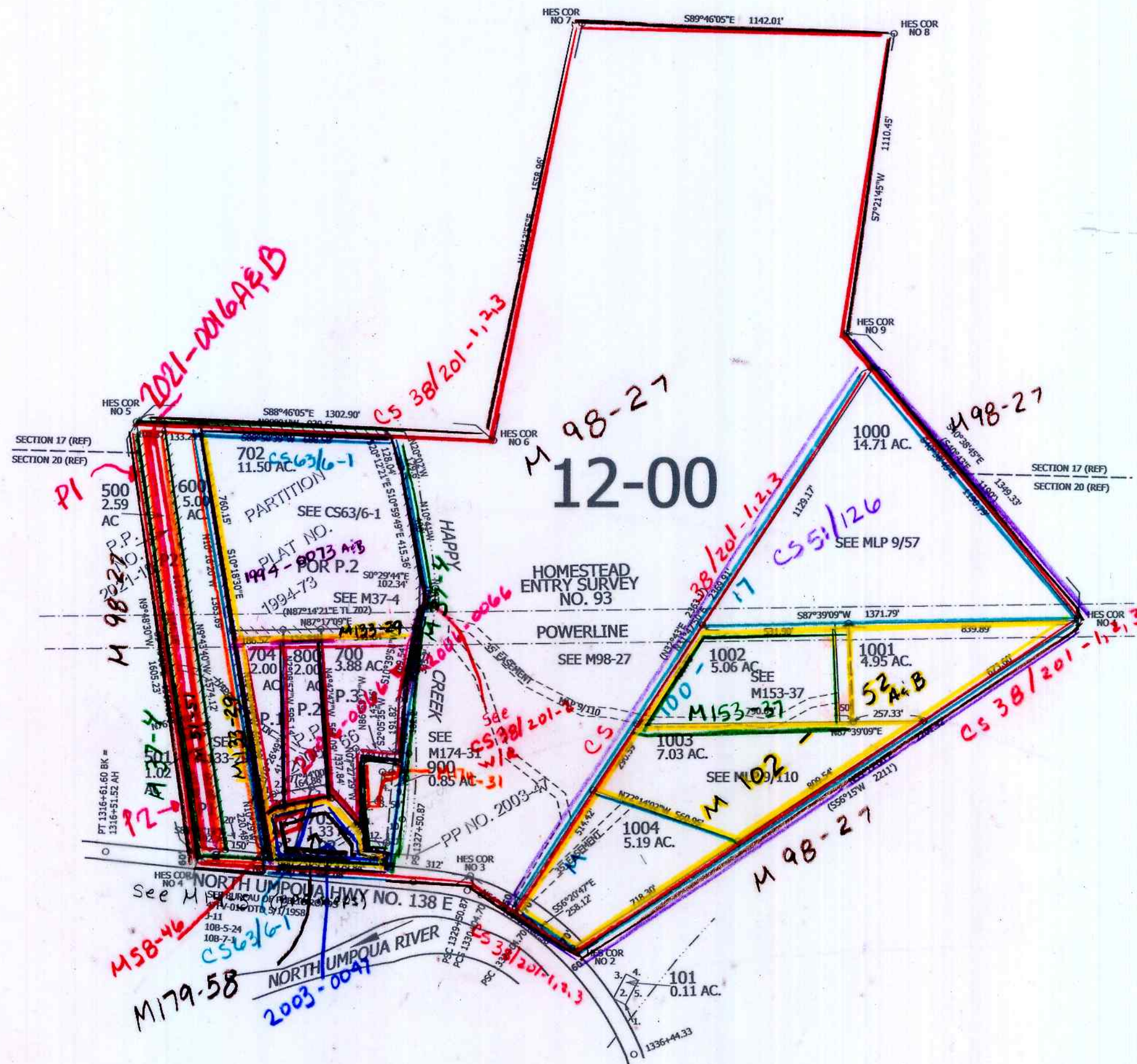
THIS MAP WAS PREPARED FOR
ASSESSMENT PURPOSE ONLY.

1" = 400'

CANCELLED NO'S
701 801 1005
901

SEE MAP 26 2E 00

SEE MAP 26 2E 00



PARCELS 700 & 900

1. N07°27'29"W 139.00'
2. N85°26'57"E 60.72'
3. N32°16'54"E 12.89'
4. N03°29'26"E 98.67'
5. S89°35'13"E 32.61'
6. N09°00'57"E 76.58'
7. S86°02'52"E 50.00'
8. S7°14'00"W 91.41'
9. S3°25'00"W 151.00'
10. S11°40'00"W 94.51'
11. N83°07'53"W 50.00'
12. N83°07'53"W 77.55'

PARCEL 101

1. S27°16'29"E 326.97'
- FROM HES 93 COR. 2
2. N62°01'30"W 50'
3. N27°01'30"E 100'
4. S62°01'30"E 50'
5. S27°58'30"W 100'

PARCEL 705

- POB-S21°27'06"E 1688.36'
FROM HES 93 COR. 5
1. N13°23'24"E 261.05'
 2. N77°41'08"E 64.90'
 3. S41°51'15"E 173.18'
 4. S17°08'01"E 75.59'
 5. S84°05'48"E 77.59'
 6. S3°32'05"E 32.16'
 7. N86°26'59"W 332.60'

PARCEL 703

1. N50°45'52"E 66.31'
2. N77°44'50"E 41.88'

SEE MAP 26 2E 00

SEE MAP 26 2E 00

26 2E 00
DETAIL MAP

5/2018
x