

THIS MAP WAS PREPARED FOR ASSESSMENT PURPOSE ONLY.

T.26S. R.2E. W.M.
DOUGLAS COUNTY

REVISED ON
6-1-12

26 2E 00
& INDEX

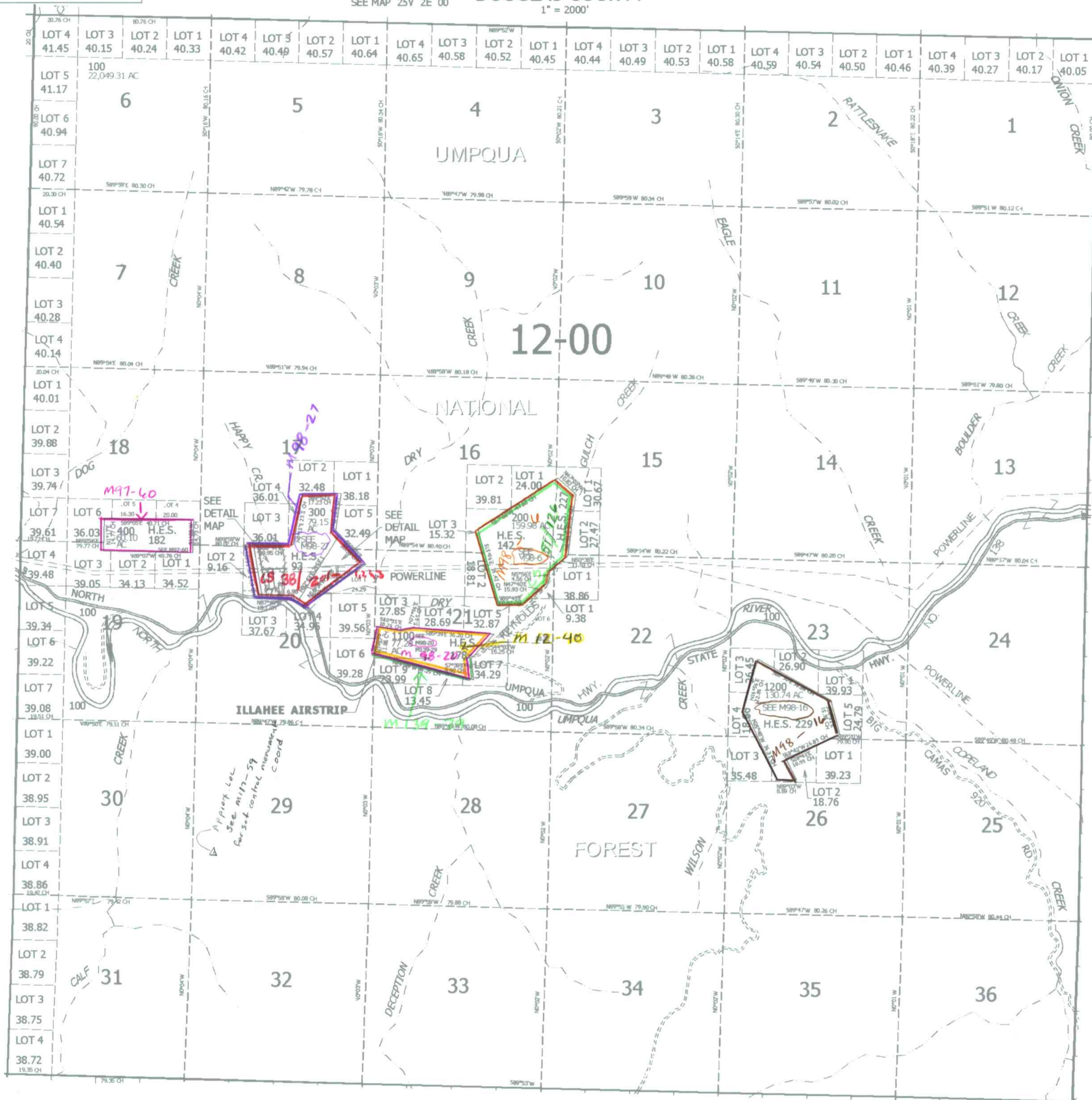
SEE MAP 25V 2E 00

1" = 2000'

CANCELLED NO'S
100A1

SEE MAP 26 1E 00

SEE MAP 26 3E 00



SEE MAP 27 2E 00

26 2E 00
& INDEX