

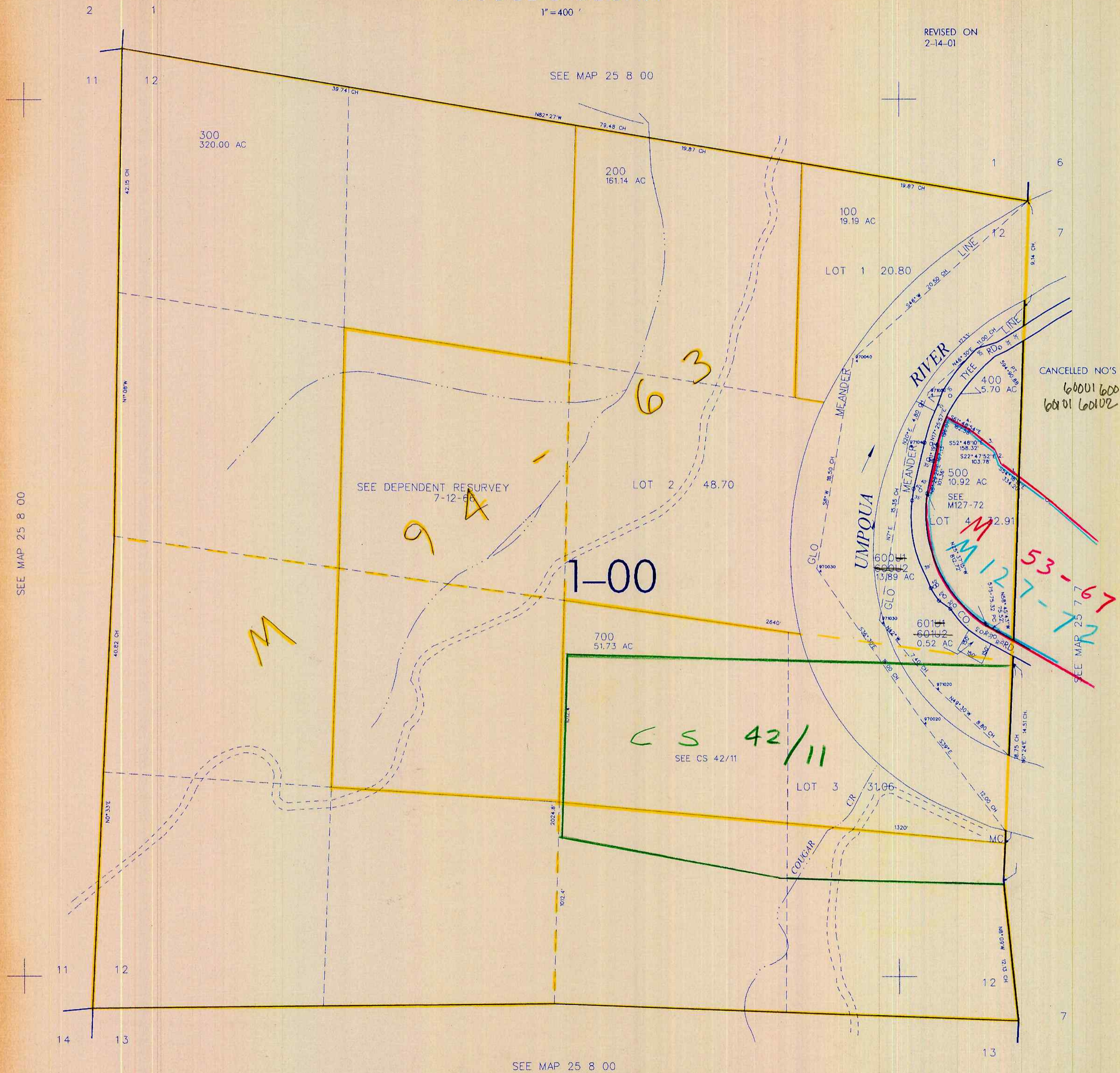
THIS MAP WAS PREPARED FOR  
ASSESSMENT PURPOSE ONLY

SEC. 12 T.25S. R. 8W W.M.  
DOUGLAS COUNTY

25 8 12

1"=400'

REVISED ON  
2-14-01



CANCELLED NO'S  
60001 60002  
60101 60102

SEE MAP 25 8 00

SEE MAP 25 8 00

SEE DEPENDENT RESURVEY  
7-12-86

SEE MAP 25 7 7

SEE MAP 25 8 00

649,000

4:10:1,000

25 8 12

2/2001 SP ✓