

SECTION 24 T.25S. R.7W. W.M.
DOUGLAS COUNTY

REVISED ON
4-27-94

25 7 24

THIS MAP WAS PREPARED FOR
ASSESSMENT PURPOSE ONLY.

1"=400'

SEE MAP 25 7

14 13

23 24

200
210.31 AC.

100
80.00 AC.

13 18

24 19

CANCELLED NO'S
400 1000
700
800

69
117

M 70 - 18

300
239.29 AC.

45-00

SEE MAP 25 7 23

SEE MAP 25 6 19

M 65 - 26
M

45-03

1188-53

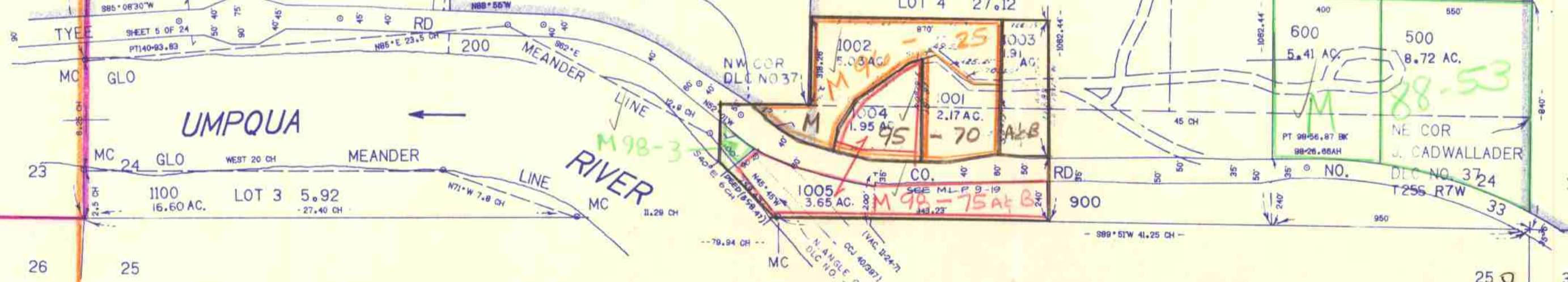
NW COR
DLC NO 37
T25S R6W

LOT 2 21.00

LOT 1 24.41

LOT 4 27.12

LOT 5 27.12



637.000

SEE MAP 25 7 25

M 98-3
M 96-25
M 88-53
M 70-18

M 95-70

25 7 24

1:211,000