

THIS MAP WAS PREPARED FOR ASSESSMENT PURPOSE ONLY.

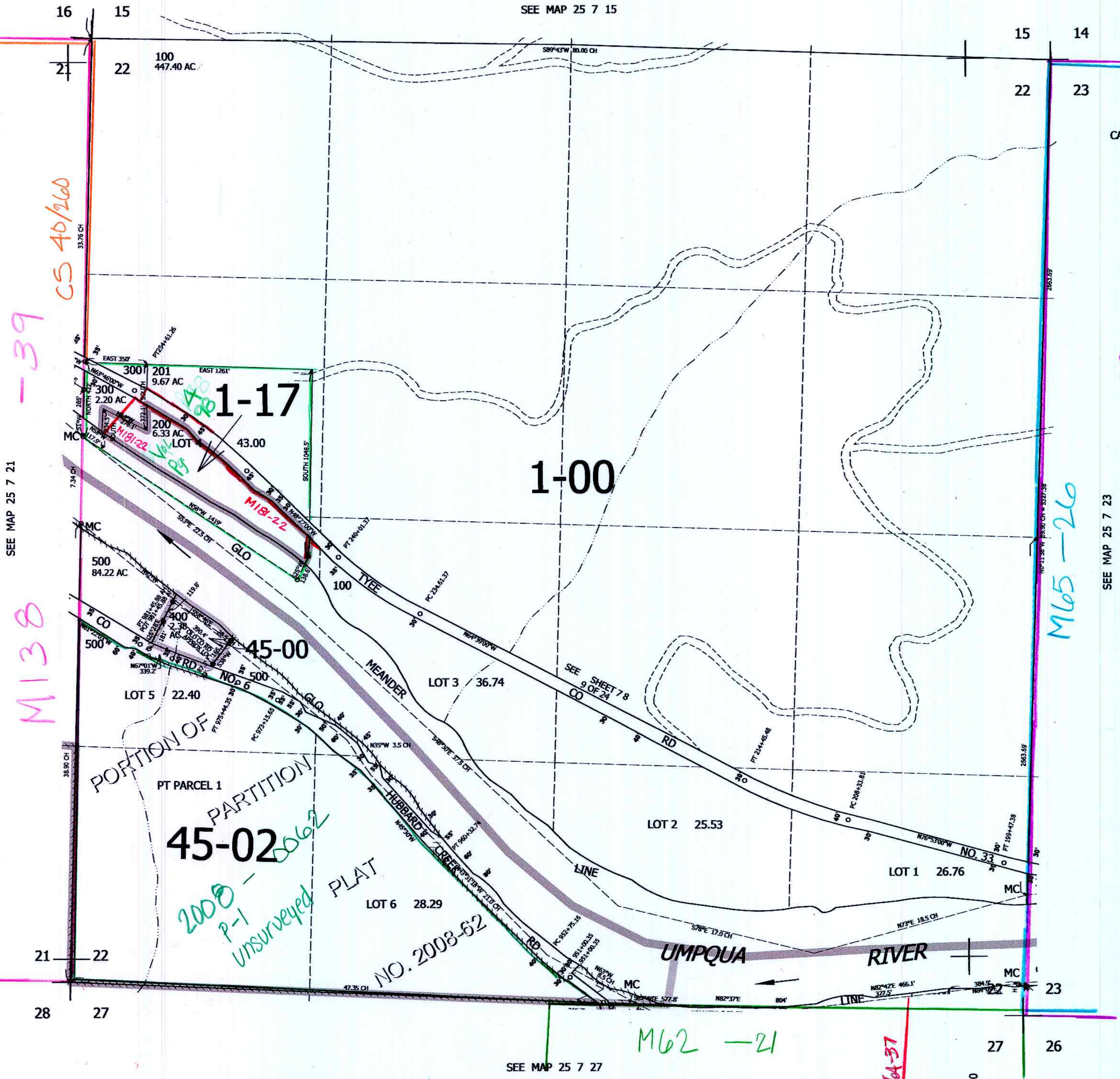
SEC.22 T.25S. R.7W. W.M. DOUGLAS COUNTY  
1" = 400'

REVISED ON 10-29-19

25 7 22

SEE MAP 25 7 15

CANCELLED NOS



SEE MAP 25 7 21

SEE MAP 25 7 23

SEE MAP 25 7 27

8/2022 BA

25 7 22

637,000

4,122,000