

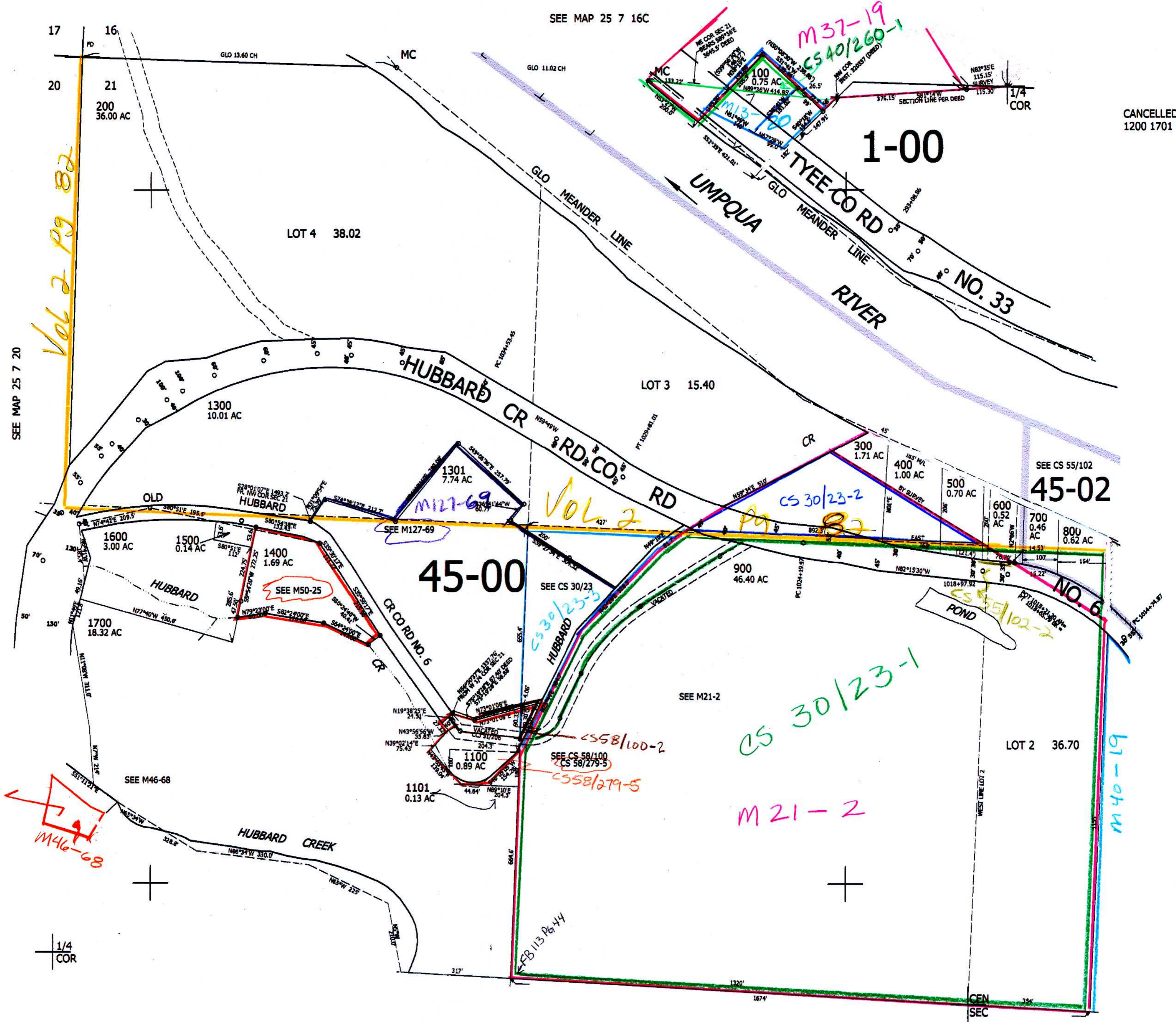
THIS MAP WAS PREPARED FOR ASSESSMENT PURPOSE ONLY.

NW1/4 SEC.21 T.25S. R.7W. W.M.
DOUGLAS COUNTY
1" = 200'

REVISED ON
12-9-13

25 7 21B

CANCELLED NOS
1200 1701 1000



SEE MAP 25 7 20

SEE MAP 25 7 16C

SEE CS 55/102

SEE MAP 25 7 21

SEE MAP 25 7 21

640,000

4,114,000

25 7 21B