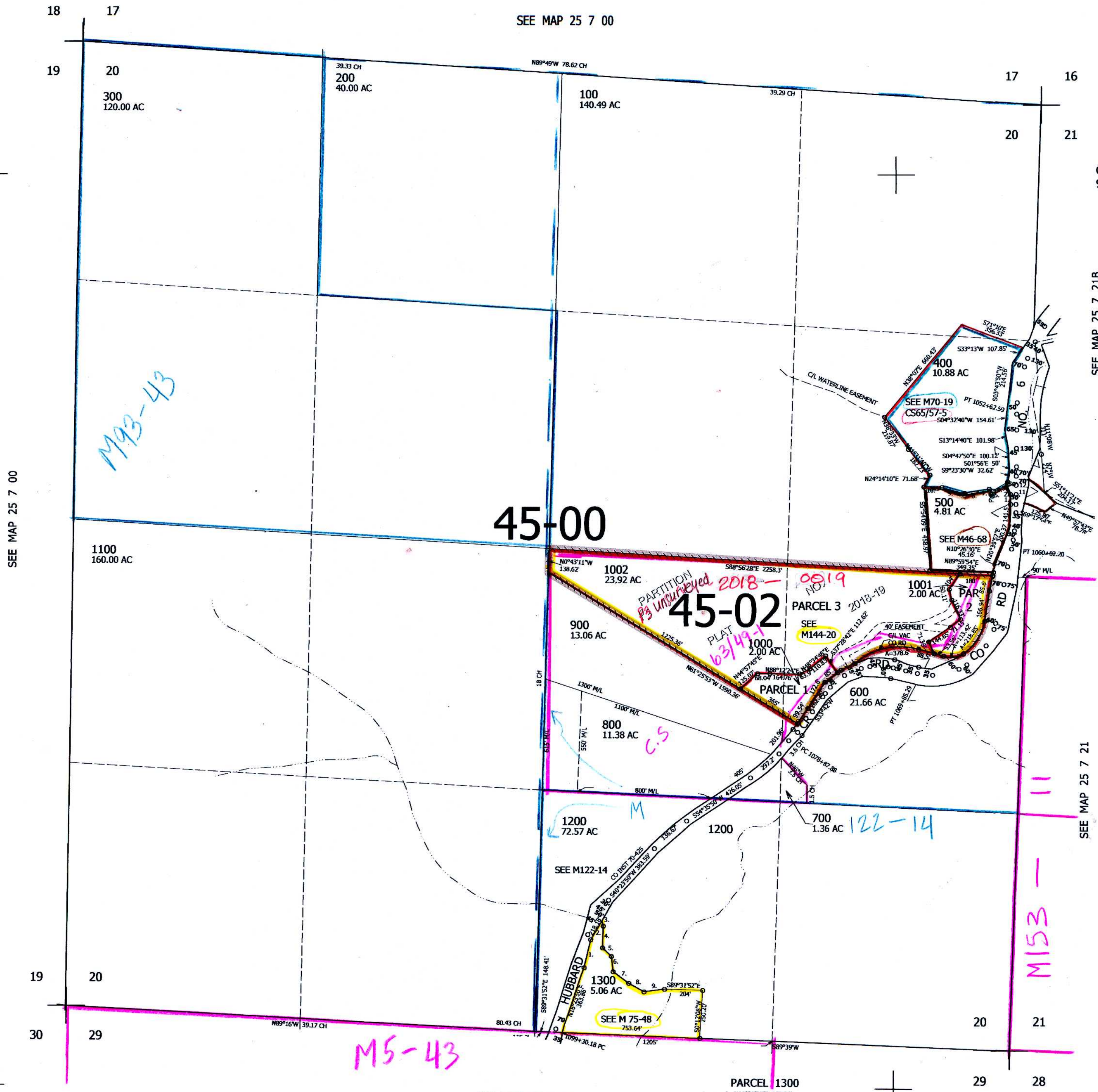


THIS MAP WAS PREPARED FOR ASSESSMENT PURPOSE ONLY.

SEC.20 T.25S. R.7W. W.M.
DOUGLAS COUNTY
1" = 400'

REVISED ON
6-28-18

25 7 20



SEE MAP 25 7 00

SEE MAP 25 7 00

CANCELLED NOS
901

SEE MAP 25 7 21B

PARCEL 500

1. N1°56'W 54.7'
2. N23°44'06\"W 53.85'
3. N9°22'36\"E 18.37'
4. S57°58'31\"W 91.86'
5. S8°02'31\"W 29'
6. N38°47'38\"W 11.97'
7. N18°18'32\"W 30.89'
8. N78°09'01\"W 137.57'
9. N77°18'16\"W 129.51'
10. S89°58'54\"W 100'
11. N11°25'01\"E 101.41'
12. N1°56'W 34.79'

SEE MAP 25 7 21

SEE MAP 25 7 29

PARCEL 1300

1. N14°31'31\"E 150.36'
2. CL LC=N22°18'08\"E 101' L=100.18'
3. S81°47'34\"E 12'
4. S2°57'03\" 118.69'
5. S44°30'48\"E 69.94'
6. S17°39'59\"E 80.17'
7. S50°54'39\"E 106.91'
8. S63°17'15\"E 95.66'
9. N80°43'09\"E 114.77'

637,000

25 7 20

4,111,000

7-5-18
EL