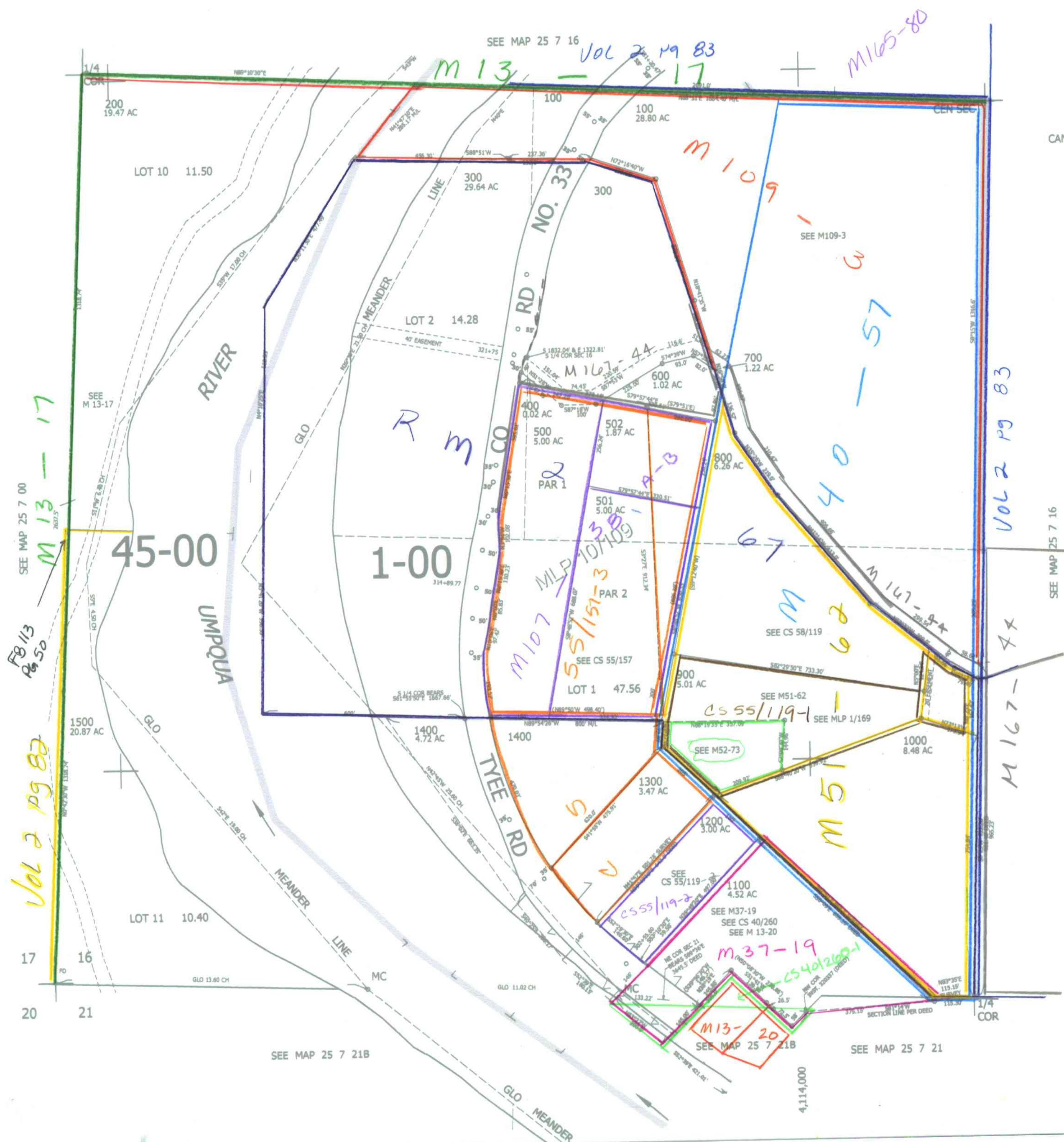


THIS MAP WAS PREPARED FOR ASSESSMENT PURPOSE ONLY.

SW1/4 SEC.16 T.25S. R.7W. W.M. DOUGLAS COUNTY
1" = 200'

REVISED ON 12-9-13

25 7 16C



CANCELLED NOS

CM
12/30/2013
sc

25 7 16C