

THIS MAP WAS PREPARED FOR ASSESSMENT PURPOSE ONLY.

SE1/4 NE1/4 SEC.16 T.25S. R.7W. W.M.
DOUGLAS COUNTY
1" = 100'

REVISED ON
12-9-13

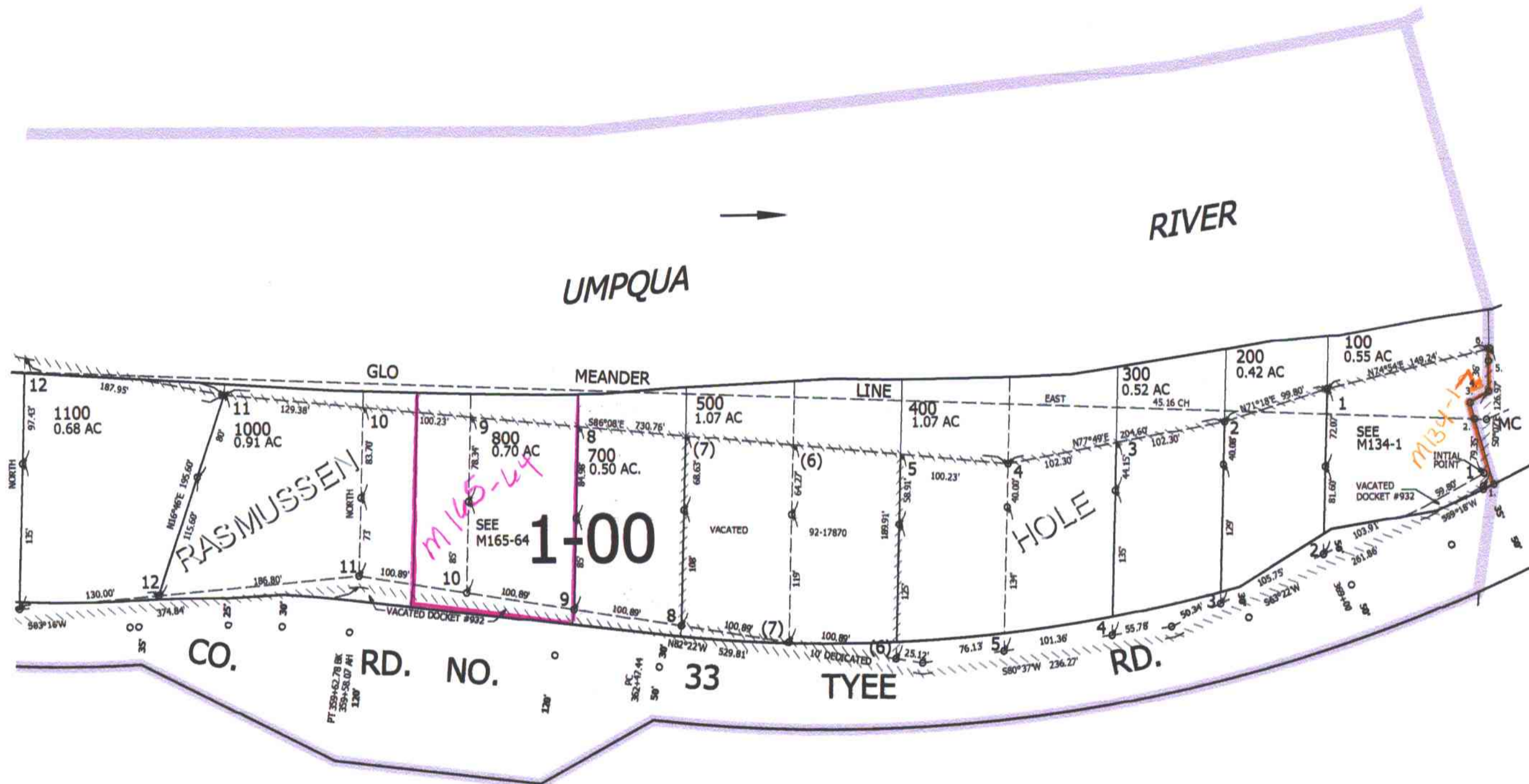
25 7 16AD

1/16 COR

SEE MAP 25 7 16

1/16 COR

CANCELLED NOS
600 901 900
101



SEE MAP 25 7 16AC

SEE MAP 25 7 15

PARCEL 100
 1. LC=N63°16'17"E 9.7'
 R=1397.4' L=9.7'
 2. N17°16'02"W 61.73'
 3. N15°08'13"W 15.83'
 4. N58°00'53"E 19.88'
 5. N0°39'39"W 27.93'
 6. N0°39'39"W 16.15' M/L
 (TO N. LINE LOT 1 RASMUSSEN HOLE SUB)

SEE MAP 25 7 16

1/16 COR

1/4 COR

aw
12/31/13

4,117,000

25 7 16AD

645,000