

THIS MAP WAS PREPARED FOR ASSESSMENT PURPOSE ONLY.

SW1/4 NE1/4 SEC.16 T.25S. R.7W. W.M.
DOUGLAS COUNTY
1" = 100'

REVISED ON
12-9-13

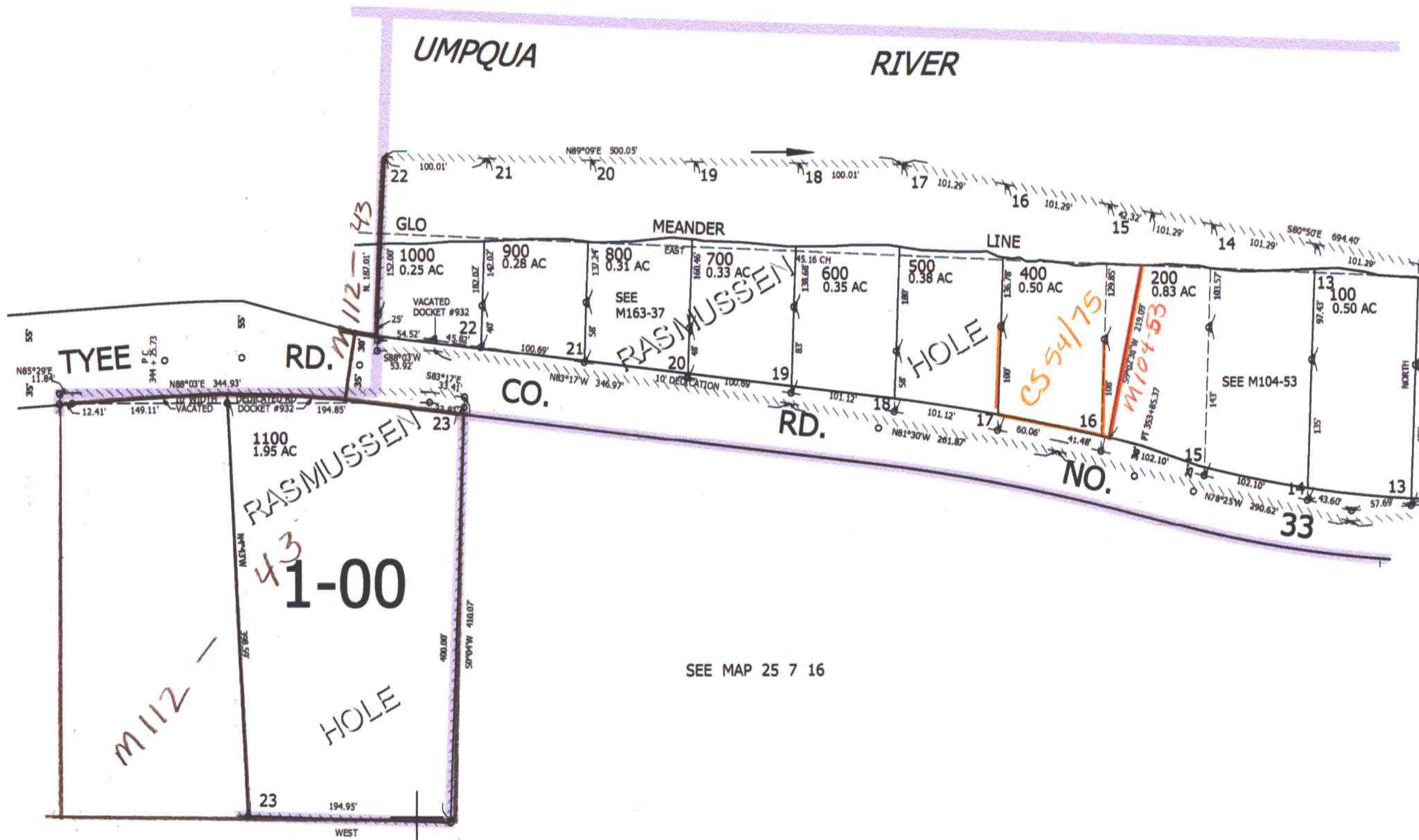
25 7 16AC

1/16 COR

1/16 COR

CANCELLED NOS
301 300 1101

SEE MAP 25 7 16



SEE MAP 25 7 16AD

SEE MAP 25 7 16

SEE MAP 25 7 16

645,000

CEN SEC

1/16 COR

4,115,000

25 7 16AC