

THIS MAP WAS PREPARED FOR ASSESSMENT PURPOSE ONLY.

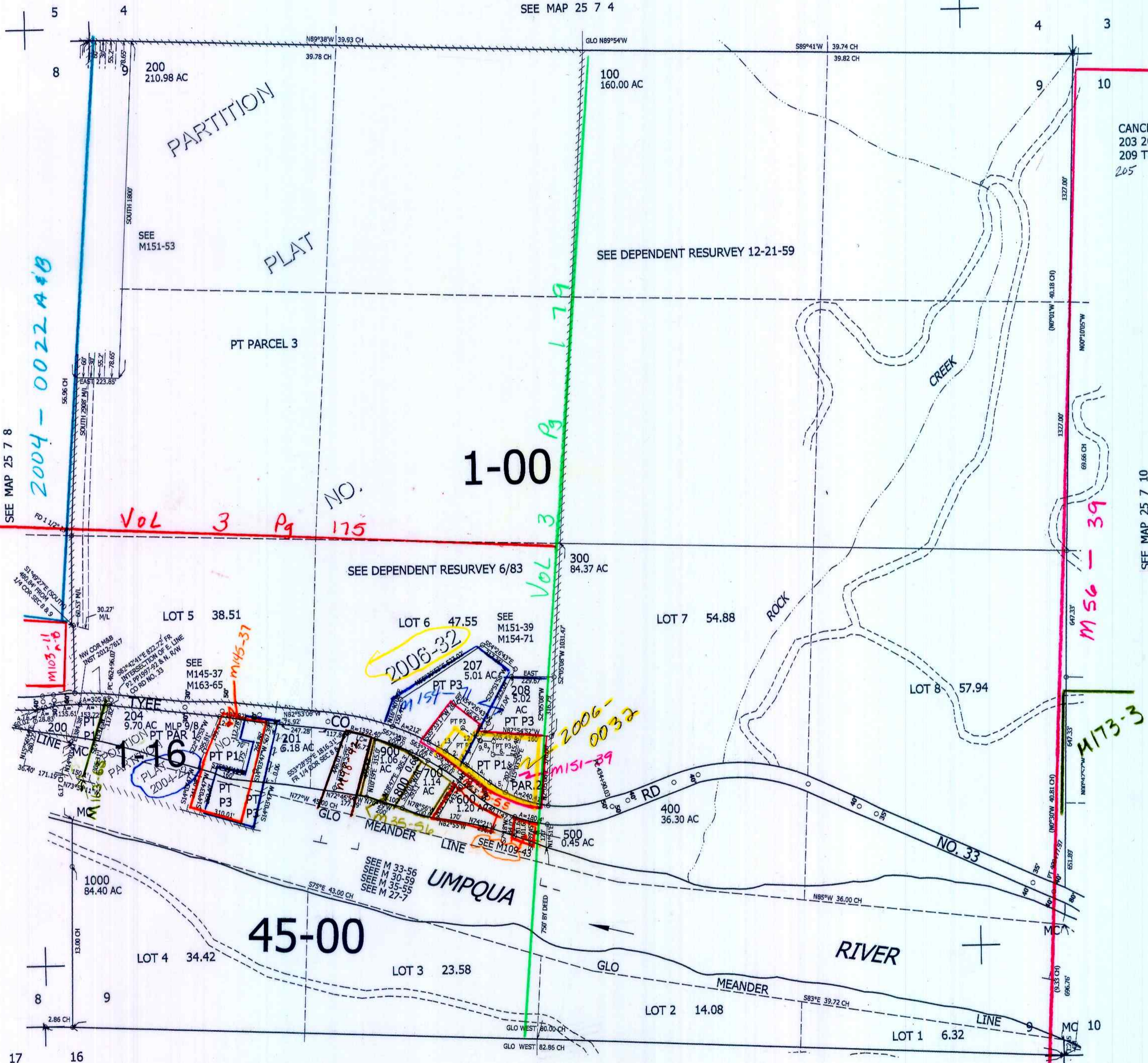
SEC.9 T.25S. R.7W. W.M. DOUGLAS COUNTY

1" = 400'

REVISED ON 2-1-22

25 7 9

SEE MAP 25 7 4



CANCELLED NOS 203 206 202 209 THRU 217 205

SEE MAP 25 7 10

648,000

TAXLOTS 207 & 208

SEE MAP 25 7 16

- 1. A=100.75' R=1482.4'
- 2. A=128 R=1482.4'
- 3. S54°26'43"E 11.26'
- 4. S54°26'43"E 150.28'
- 5. A=100' R=666.2'
- 6. N87°54'52"W 122.73'
- 7. N2°05'08"E 70.07'
- 8. N87°54'52"W 69.13'
- 9. N54°26'43"W 5.88'
- 10. N25°51'58"E 42.85'
- 11. N25°51'58"E 58.6'
- 12. N54°26'43"W 113.5'
- 13. S35°33'17"W 155.5'
- 14. N25°51'58"E 152.14'

am 02/29/08 25 7 9