

THIS MAP WAS PREPARED FOR ASSESSMENT PURPOSE ONLY.

SW1/4 SW1/4 SEC.36 T.25S. R.6W. W.M.  
DOUGLAS COUNTY  
1" = 100'

REVISED ON  
1-11-21

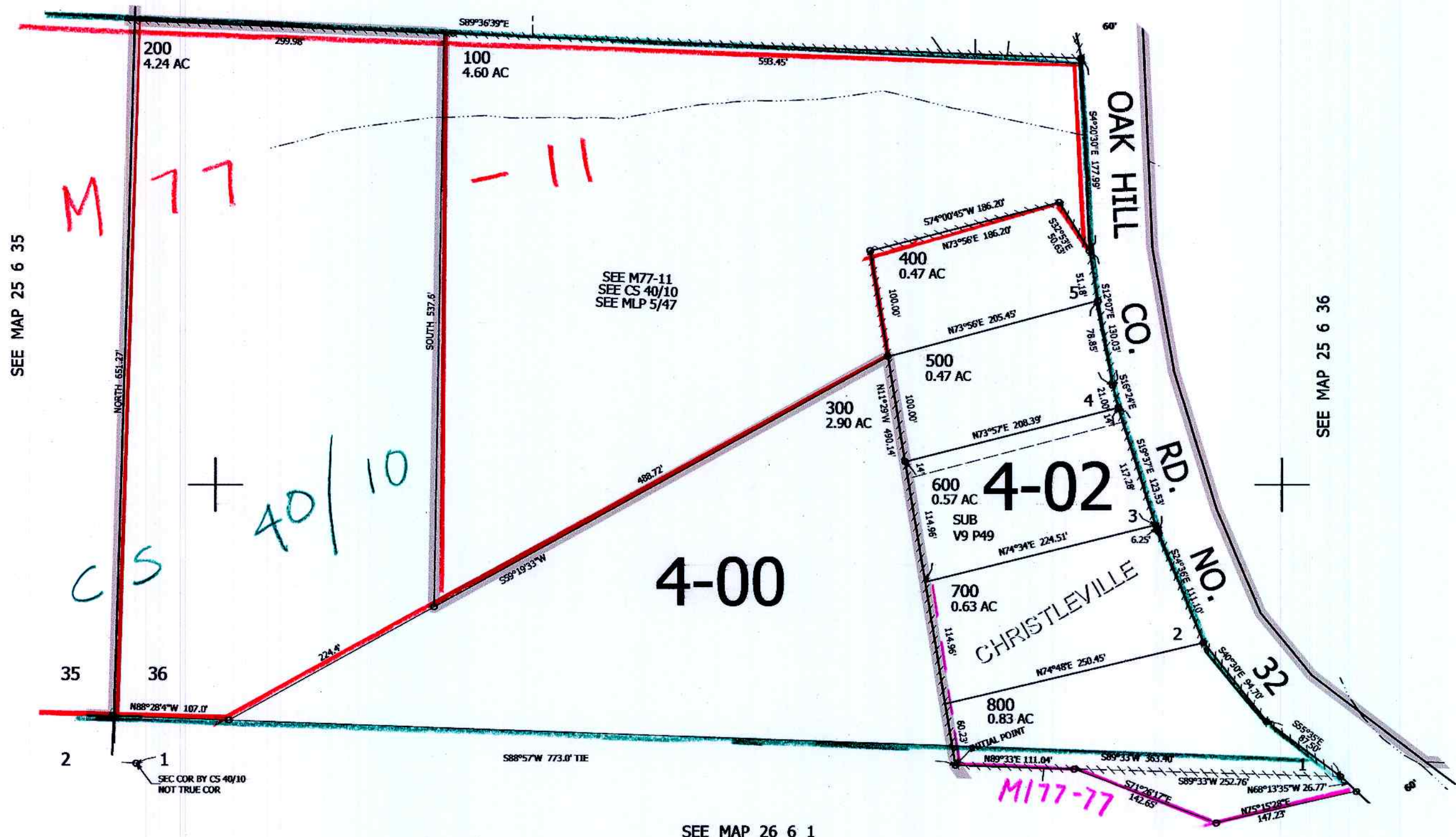
25 6 36CC

1/16 COR

1/16 COR

CANCELLED NOS

SEE MAP 25 6 36



SEE MAP 25 6 35

SEE MAP 25 6 36

625,000

SEE MAP 26 6 1

4,160,000

1-2021  
JCV

25 6 36CC