

THIS MAP WAS PREPARED FOR ASSESSMENT PURPOSE ONLY.

SE1/4 NE1/4 SEC.36 T.26S. R.6W. W.M.
DOUGLAS COUNTY
1" = 100'

REVISED ON
4-2-14

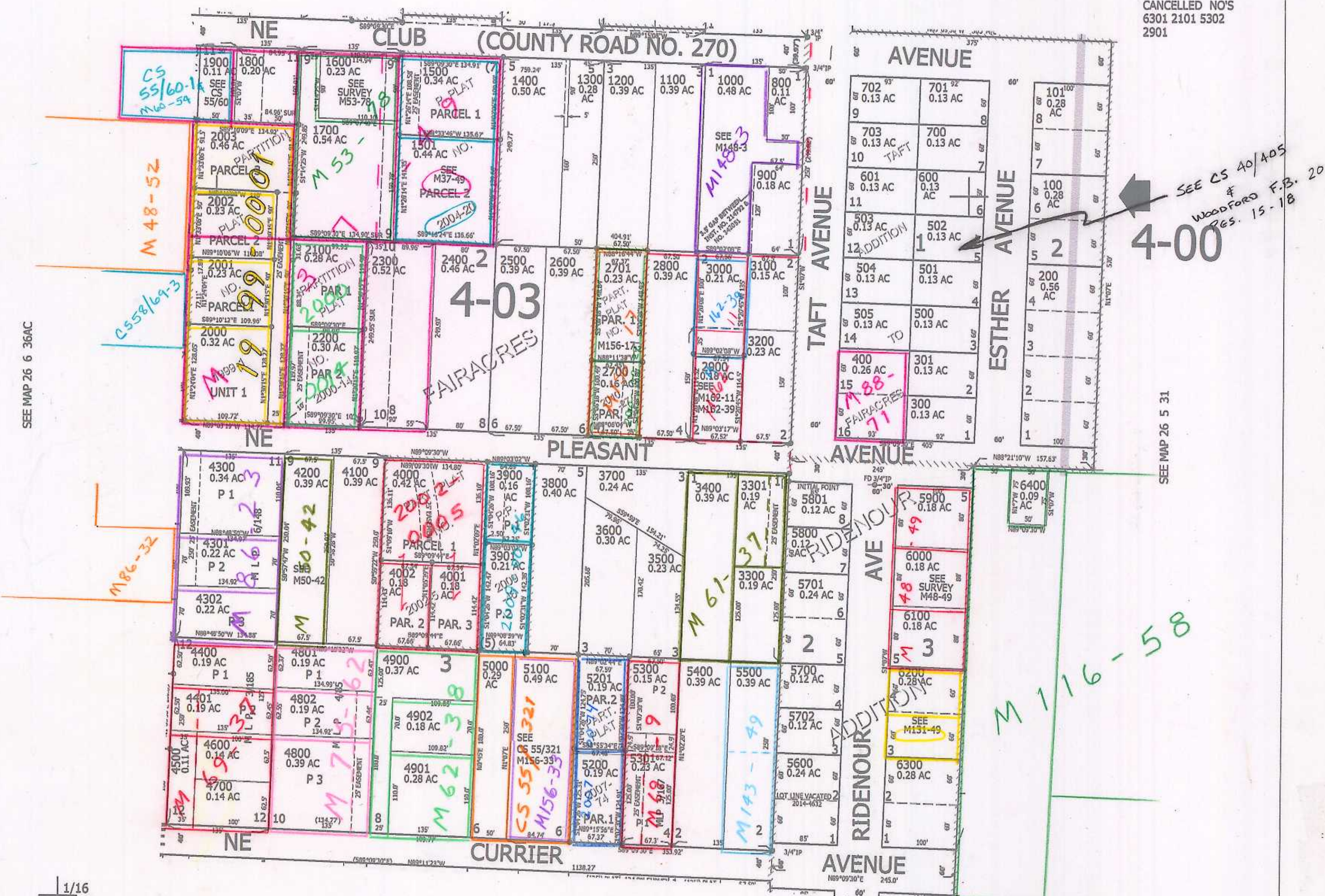
26 6 36AD

1/16
COR

SEE MAP 26 6 36AA

1/16
COR

CANCELLED NO'S
6301 2101 5302
2901



SEE MAP 26 6 36AC

SEE MAP 26 5 31

1/16
COR

SEE MAP 26 6 36DA

1/4
COR

595,500

4,163,000

26 6 36AD 2/03 JP