

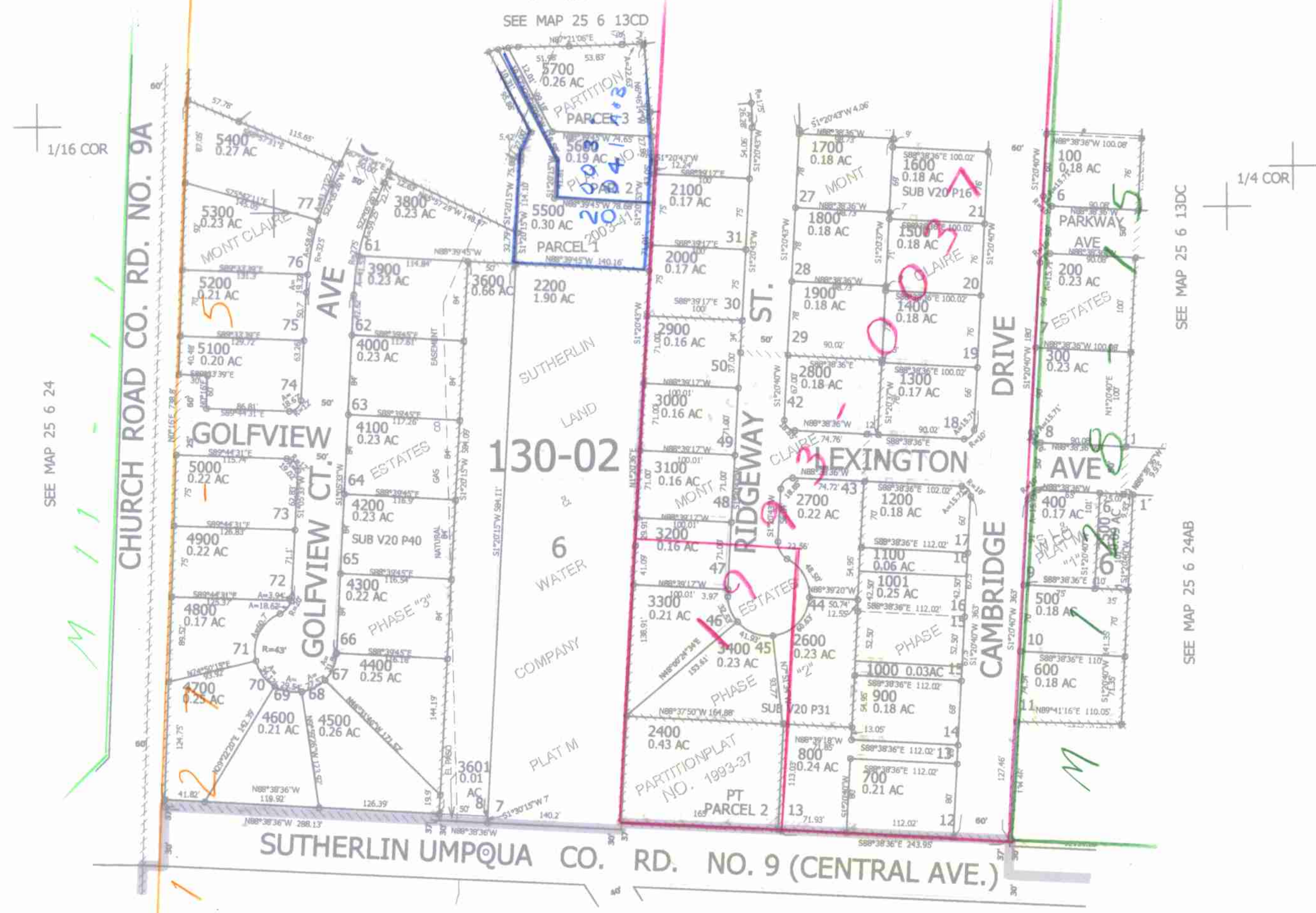
THIS MAP WAS PREPARED FOR ASSESSMENT PURPOSE ONLY.

NE1/4 NW1/4 SEC.24 T.25S. R.6W. W.M.
DOUGLAS COUNTY

1" = 100'

REVISED ON
6-7-07

25 6 24BA
SUTHERLIN



1/16 COR

SEE MAP 25 6 24

1/16 COR

1/4 COR

SEE MAP 25 6 13DC

SEE MAP 25 6 24AB

CANCELLED NOS
199 1799 2300
2401 1101 3500
3700

SEE MAP 25 6 24

SEE MAP 25 6 24A

639,500

1/16 COR
4,162,000

25 6 24BA
SUTHERLIN

6/01 JP n/w