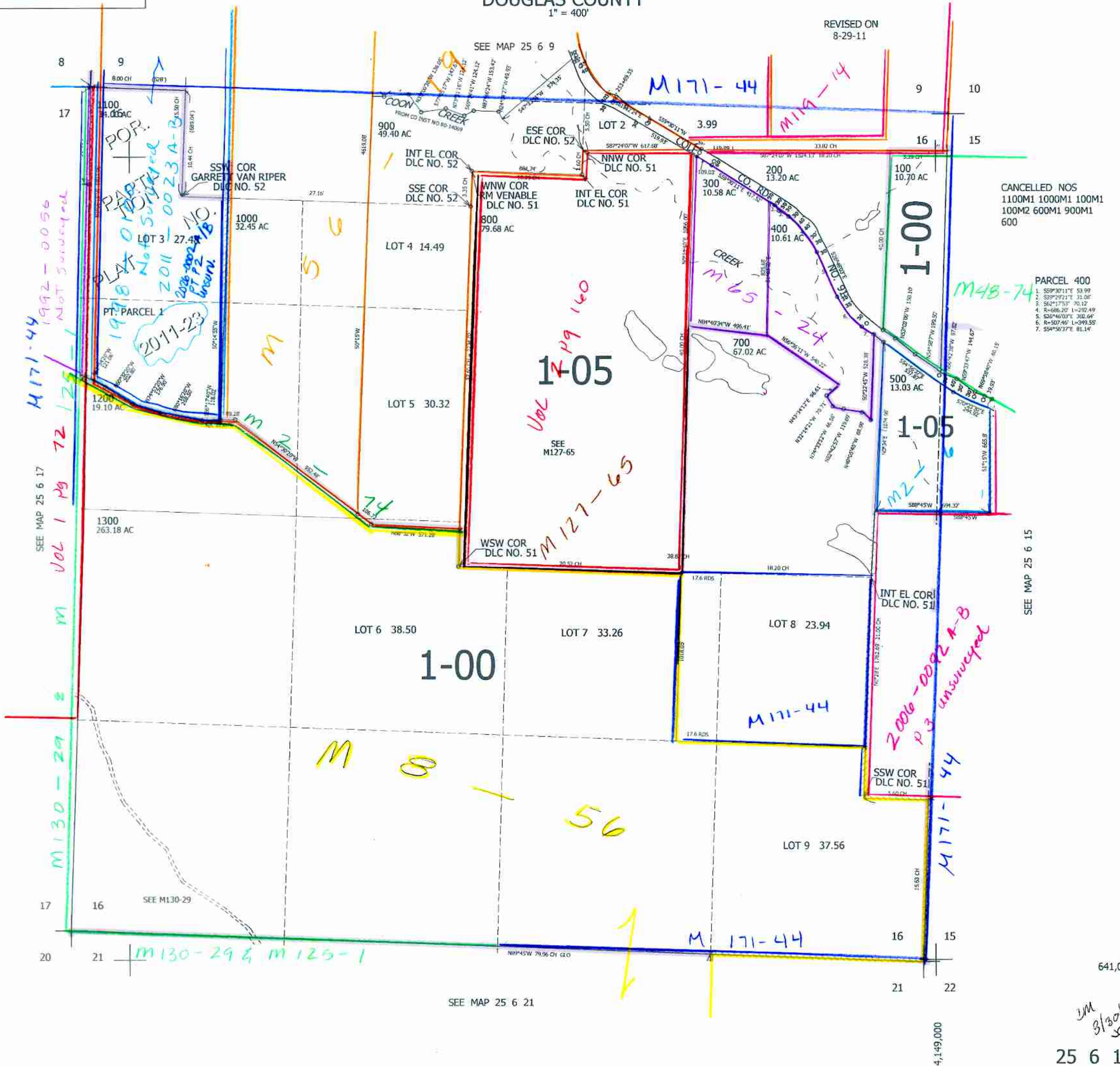


THIS MAP WAS PREPARED FOR ASSESSMENT PURPOSE ONLY.

SEC.16 T.25S. R.6W. W.M.  
DOUGLAS COUNTY  
1" = 400'

25 6 16

REVISED ON  
8-29-11



CANCELLED NOS  
1100M1 1000M1 100M1  
100M2 600M1 900M1  
600

PARCEL 400  
1. S59°30'11"E 53.99'  
2. S37°59'21"E 11.05'  
3. S62°17'53"E 70.12'  
4. R-686.20' L-252.49'  
5. S26°46'00"E 302.64'  
6. R-507.46' L-349.55'  
7. S54°50'37"E 81.14'

M171-44  
1992-0056  
NOT SURVEYED

SEE MAP 25 6 17  
VOL 1 Pg 72

M130-29

M130-29 & M125-1

M127-65  
VOL 1 Pg 140

2006-0092 A-B  
P.3 UNSURVEYED

641,000

3/3/04  
SCV

25 6 16

4,149,000