

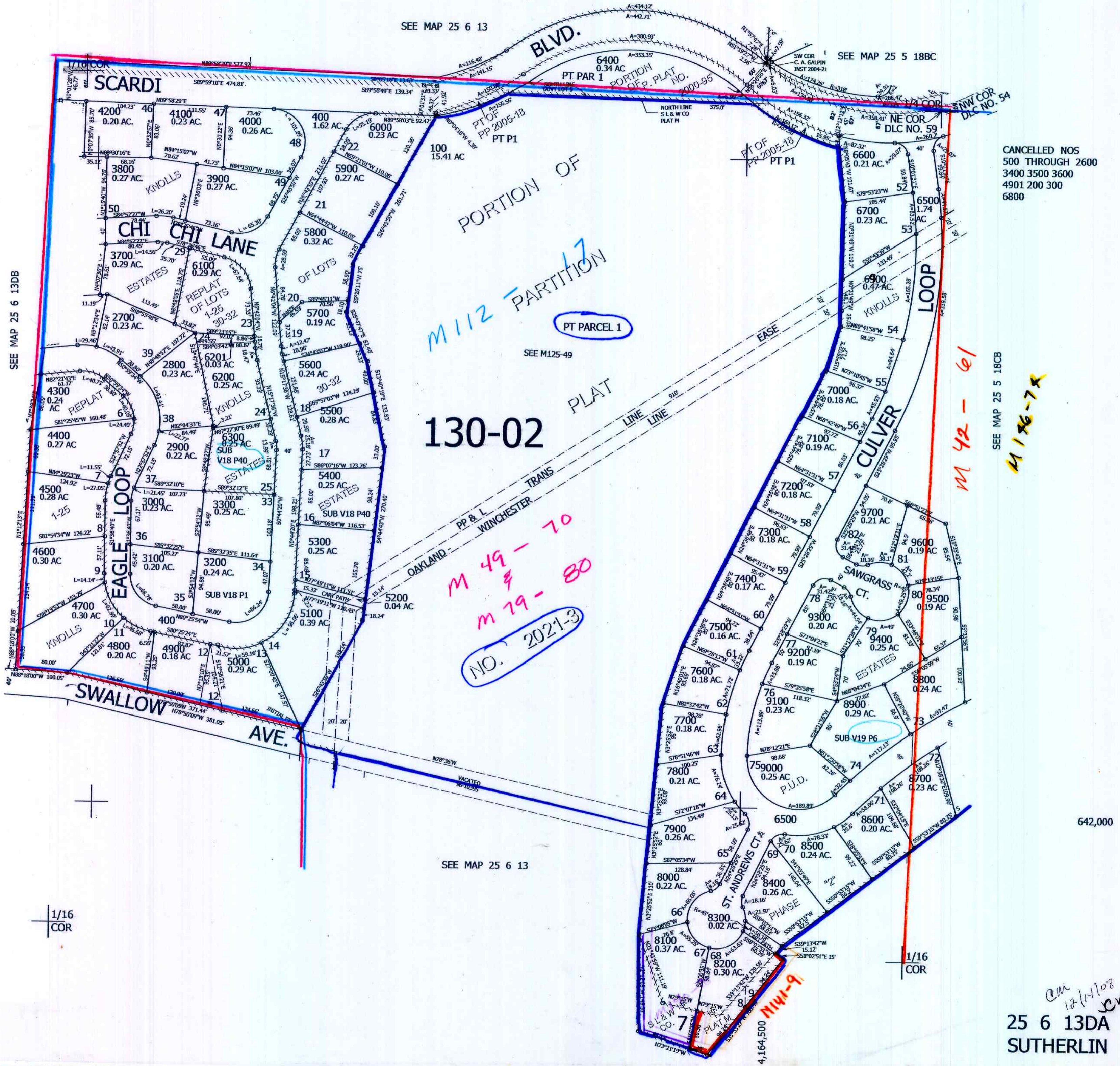
THIS MAP WAS PREPARED FOR ASSESSMENT PURPOSE ONLY.

NE1/4 SE1/4 SEC.13 T.25S. R.6W. W.M.
DOUGLAS COUNTY

1" = 100'

REVISED ON
1-19-21

25 6 13DA
SUTHERLIN



CANCELLED NOS
500 THROUGH 2600
3400 3500 3600
4901 200 300
6800

SEE MAP 25 5 18CB
M 112-74

M 42-61

642,000

cm
12/14/08
25 6 13DA
SUTHERLIN