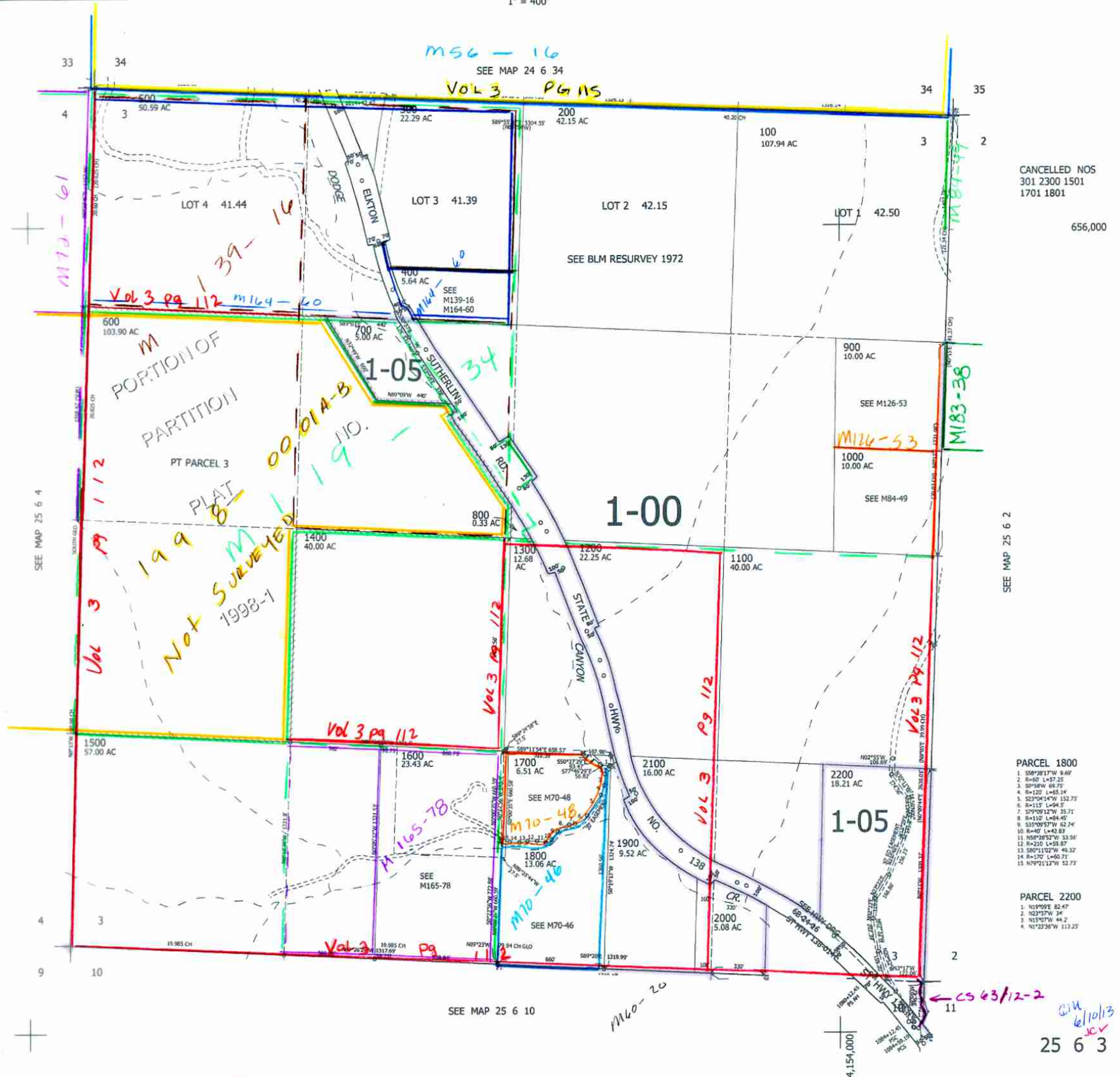


THIS MAP WAS PREPARED FOR
ASSESSMENT PURPOSE ONLY.

SEC.3 T.25S. R.6W. W.M.
DOUGLAS COUNTY
1" = 400'

REVISED ON
8-11-14

25 6 3



CANCELLED NOS
301 2300 1501
1701 1801

656,000

- PARCEL 1800
- 588°38'17"W 9.68'
 - R=60' L=57.25'
 - 90°54'W 69.75'
 - R=125' L=65.14'
 - S23°04'47"W 152.75'
 - R=115' L=24.5'
 - S79°09'12"W 35.71'
 - R=110' L=84.45'
 - S35°09'57"W 62.24'
 - R=67' L=42.83'
 - N58°28'52"W 53.56'
 - R=210' L=59.87'
 - S80°11'02"W 49.32'
 - R=170' L=60.71'
 - N79°21'17"W 52.73'

- PARCEL 2200
- N19°09'E 82.47'
 - N23°37'W 34'
 - N15°07'W 44.2'
 - N1°23'56"W 113.25'

CS 63/12-2
CIV
6/10/13
JCW
25 6 3