

SE1/4 SEC.23 T.25S. R.5W. W.M.  
DOUGLAS COUNTY

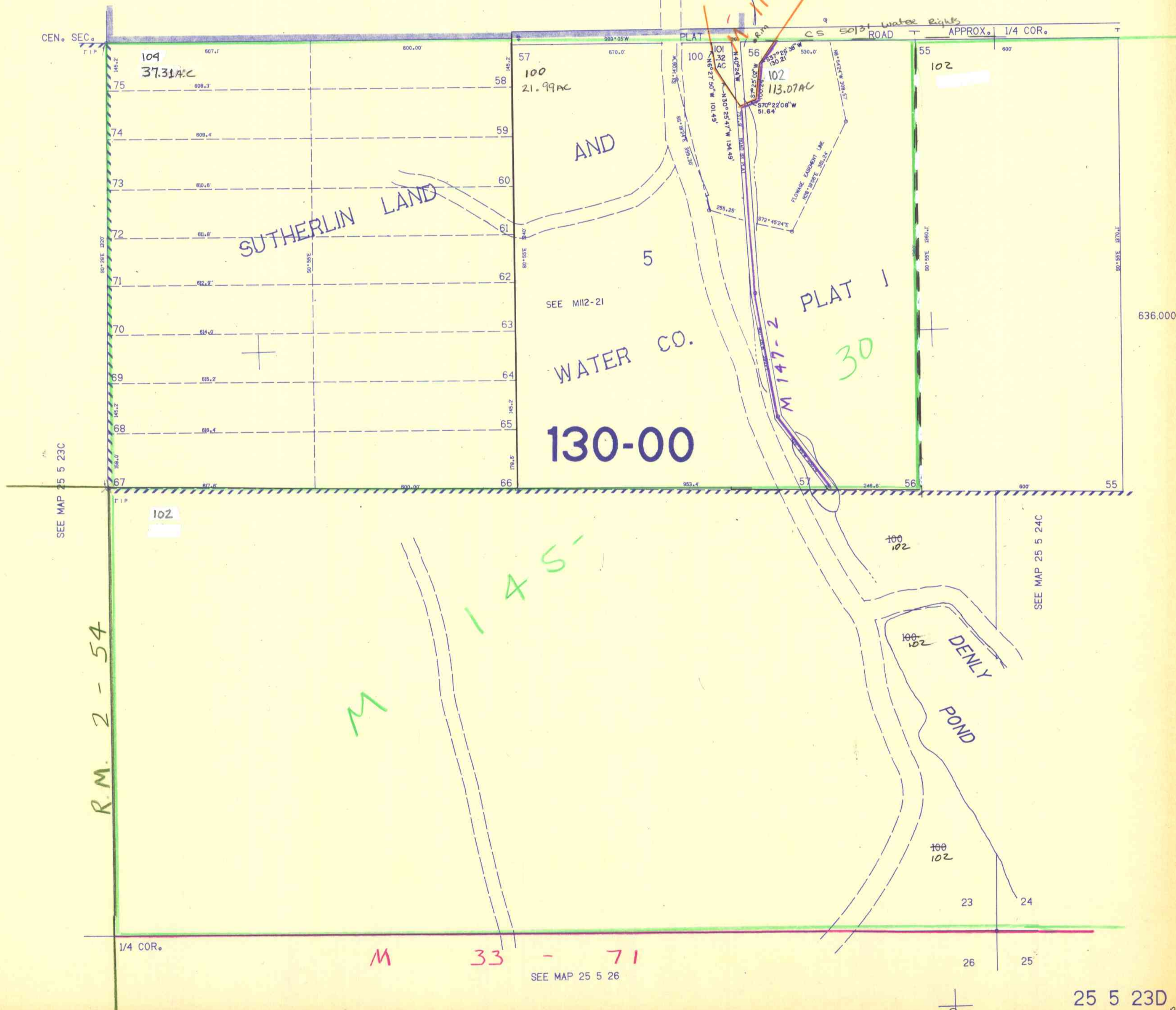
REVISED ON  
7-5-91

25 5 23D

THIS MAP WAS PREPARED FOR  
ASSESSMENT PURPOSE ONLY.

1"=200'

SEE MAP 25 5 23A



CONTROL 04.9.79 LAYOUT 82.P.12.72 T.ED T.2.80 CHECKED 10.1.80

25 5 23D

7-91 JP