

THIS MAP WAS PREPARED FOR ASSESSMENT PURPOSE ONLY.

NW1/4 SEC.32 T.25S. R.5W. W.M.
DOUGLAS COUNTY
1" = 200'

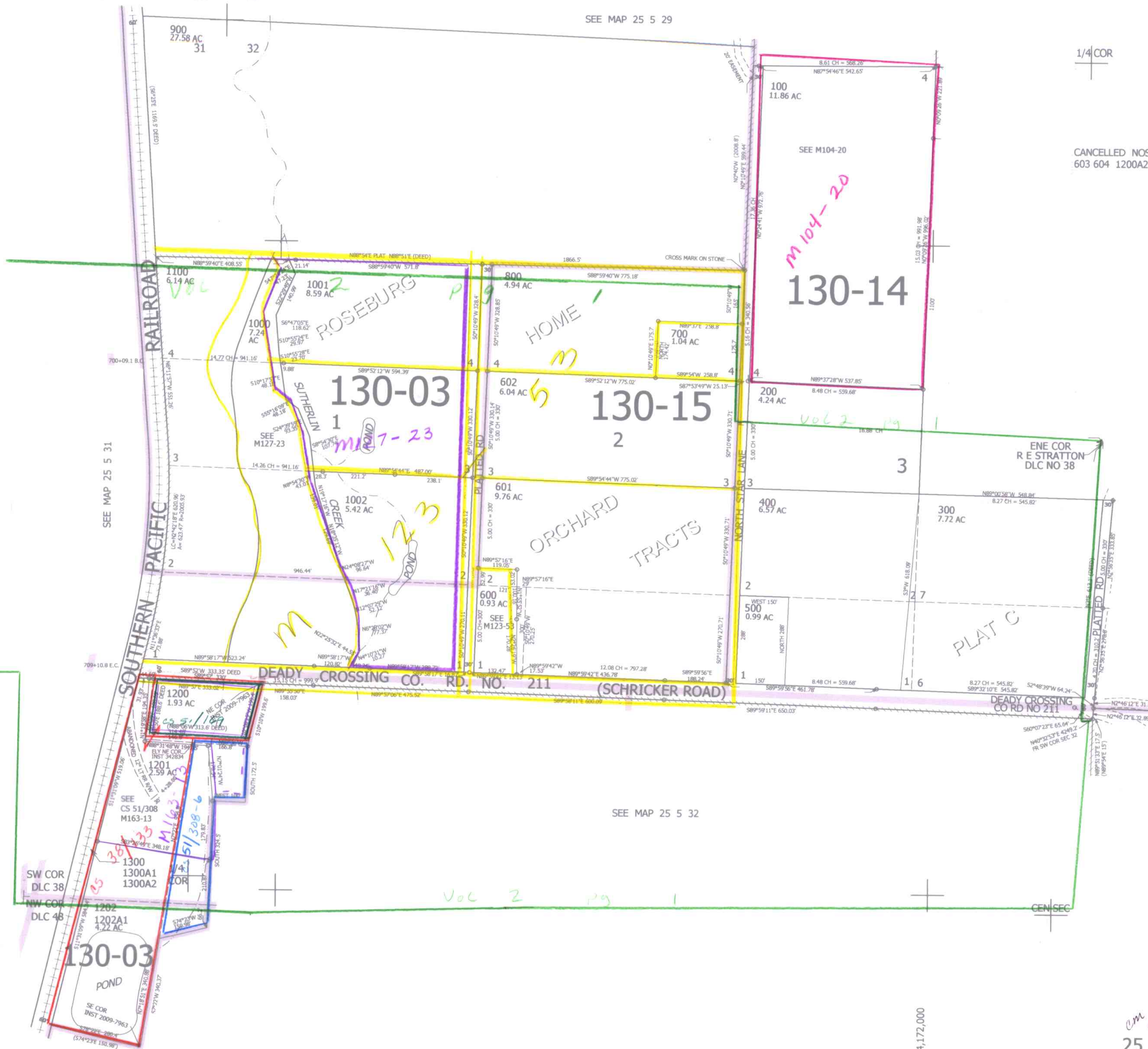
REVISED ON
2-13-12

25 5 32B

SEE MAP 25 5 29

1/4 COR

CANCELLED NOS
603 604 1200A2



SEE MAP 25 5 32A

SEE MAP 25 5 32

627,000

4,172,000

am scv
att:los
25 5 32B