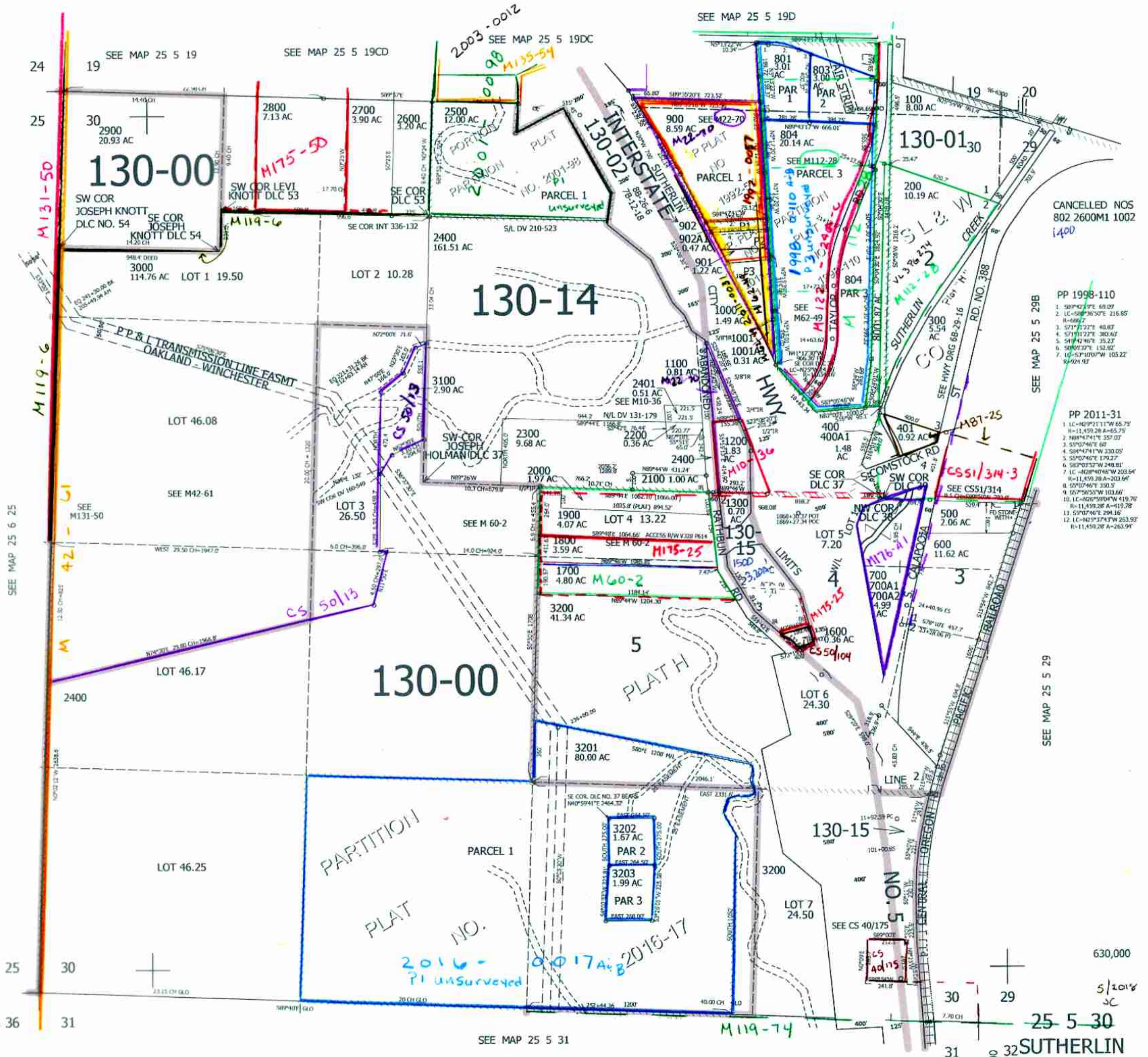


THIS MAP WAS PREPARED FOR ASSESSMENT PURPOSE ONLY.

SEC.30 T.25S. R.5W. W.M. DOUGLAS COUNTY
1" = 400'

REVISED ON 4-4-18

25 5 30 SUTHERLIN



CANCELLED NOS
802 2600M1 1002
1400

PP 1998-110

1. S89°40'37"E 69.09'
2. LC-S89°30'30"E 216.85'
3. S71°17'27"E 40.83'
4. S71°17'27"E 383.83'
5. S81°42'47"E 35.23'
6. S89°37'37"E 152.82'
7. LC-S71°17'27"W 105.22'
8. S71°17'27"E 40.83'

PP 2011-31

1. LC-N89°21'11"W 65.75'
2. N89°47'41"E 357.03'
3. S59°27'40"E 60'
4. S89°47'41"W 233.05'
5. S59°27'40"E 179.27'
6. S89°03'52"W 248.81'
7. LC-N89°40'48"W 203.64'
8. N89°47'41"E 357.03'
9. S59°27'40"E 179.27'
10. LC-N89°59'04"W 419.76'
11. S89°03'52"W 248.81'
12. LC-N89°59'04"W 263.93'
13. N89°47'41"E 357.03'

SEE MAP 25 5 29B

SEE MAP 25 5 29

630,000
5/2018
JC

25 5 30 SUTHERLIN

SEE MAP 25 5 31

SEE MAP 25 6 25

SEE MAP 25 5 19D

SEE MAP 25 5 19CD

SEE MAP 25 5 19

36

25

30

31

24

25

19

20

24

25

30

31

24

25

30

31

24

25

30

31

24

25

30

31

31

29

30

31

24

25

30

31

24

25

30

31

24

25

30

31

24

25

30

31

24

25

30

31

24

25

30

31

24

25

30

31

24

25

30

31

24

25

30

31

24

25

30

31

24

25

30

31

24

25

30

31

24

25

30

31

24

25

30

31

24

25

30

31

24

25

30

31

24

25

30

31

24

25

30

31

24

25

30

31

24

25

30

31

24

25

30

31

24

25

30

31

24

25

30

31

24

25

30

31

24

25

30

31

24

25

30

31

24

25

30

31

24

25

30

31

24

25

30

31

24

25

30

31

24

25

30

31

24

25

30

31

24

25

30

31

24

25

30

31

24

25

30

31

24

25

30

31

24

25

30

31

24

25

30

31

24

25

30

31

24

25

30

31

24

25

30

31

24

25

30

31

24

25

30

31

24

25

30

31

24

25

30

31

24

25

30

31

24

25

30

31

24

25

30

31

24

25

30

31

24

25

30

31

24

25

30

31

24

25

30

31

24

25

30

31

24

25

30

31

24

25

30

31

24

25

30

31

24

25

30

31

24

25

30

31

24

25

30

31

24

25

30

31

24

25

30

31

24

25

30

31

24

25

30

31

24

25

30

31

24

25

30

31

24

25

30

31

24

25

30

31

24

25

30

31

24

25

30

31

24

25

30

31

24

25

30

31

24

25

30

31

24

25

30

31

24

25

30

31