

SECTION 28 T.25S. R.5W. W.M.
DOUGLAS COUNTY

REVISED ON
6-6-91

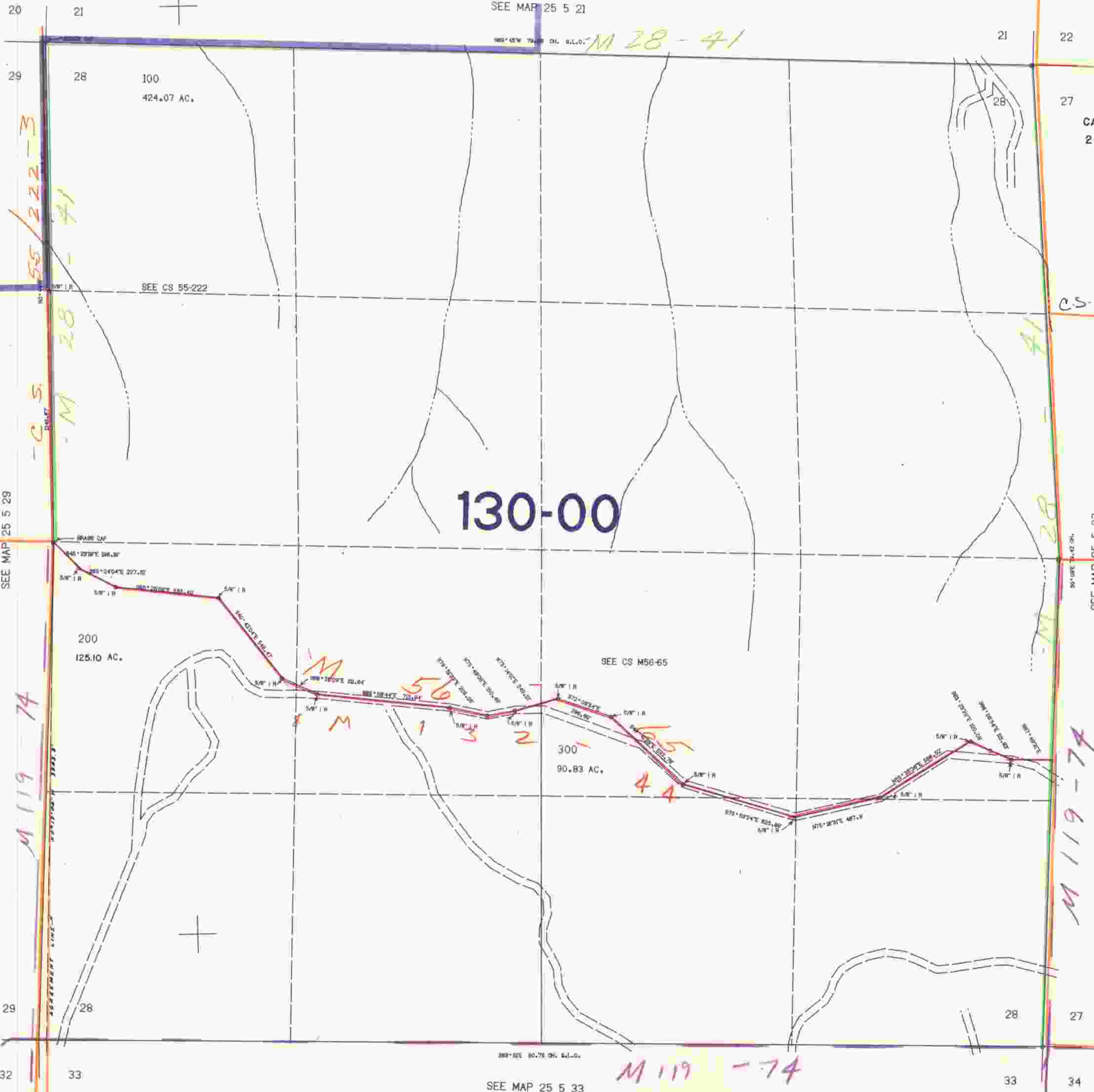
25 5 28

THIS MAP WAS PREPARED FOR
ASSESSMENT PURPOSE ONLY.

1"=400'

SEE MAP 25 5 21

M 28 - 41



CANCELLED NO'S
201

C.S. 41/376

130-00

M 79-76

M 119-74

M 119-74

M 137-29

M 119-74

25 5 28

SEE MAP 25 5 29

SEE MAP 25 5 27

SEE MAP 25 5 33

1:255,000

630,000