

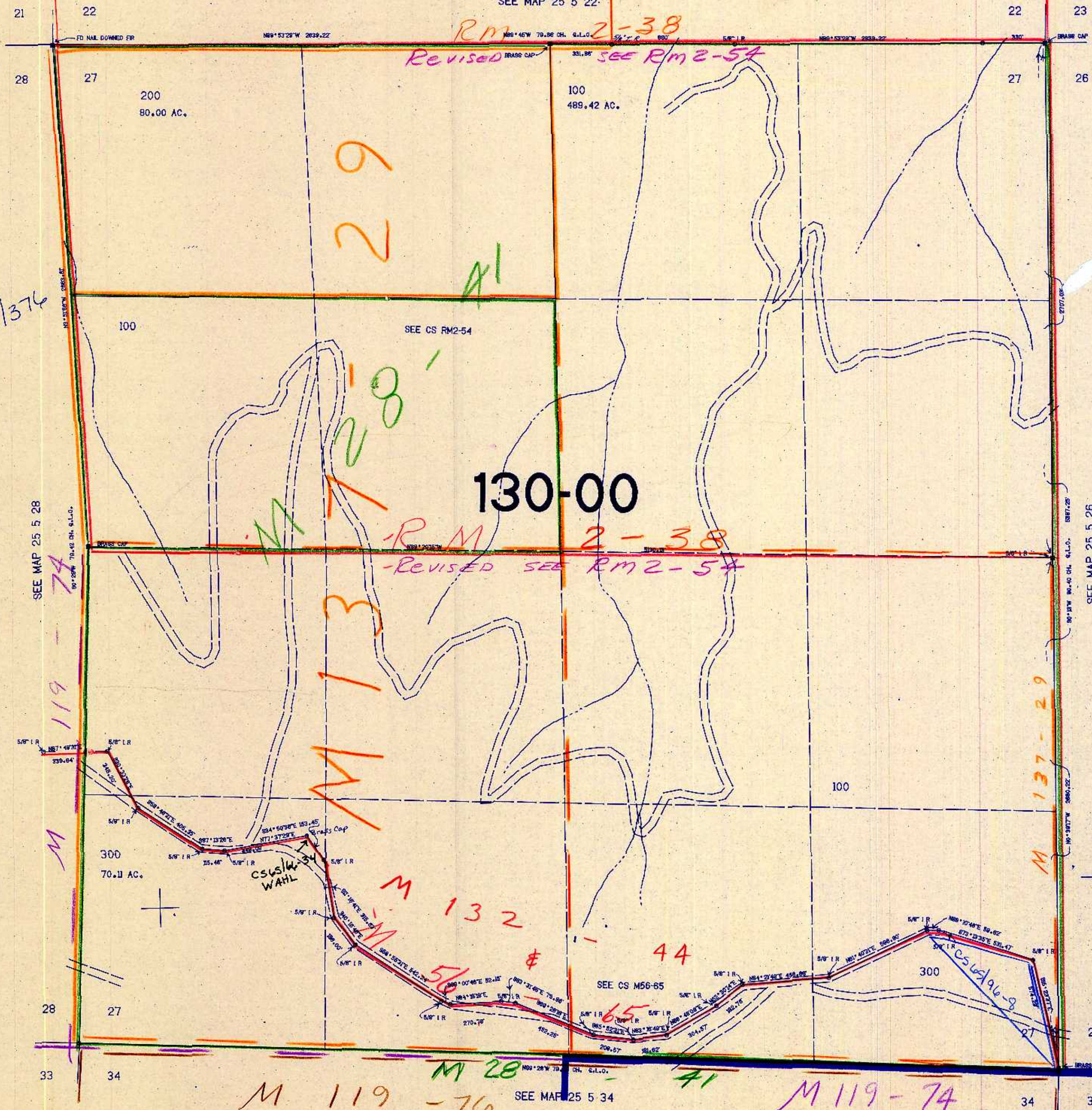
SECTION 27 T.25S. R.5W. W.M.
DOUGLAS COUNTY

25 5 27

THIS MAP WAS PREPARED FOR
ASSESSMENT PURPOSE ONLY.

1"=400'

SEE MAP 25 5 22



SEE MAP 25 5 26

630.000

25 5 27

9/80 JH