

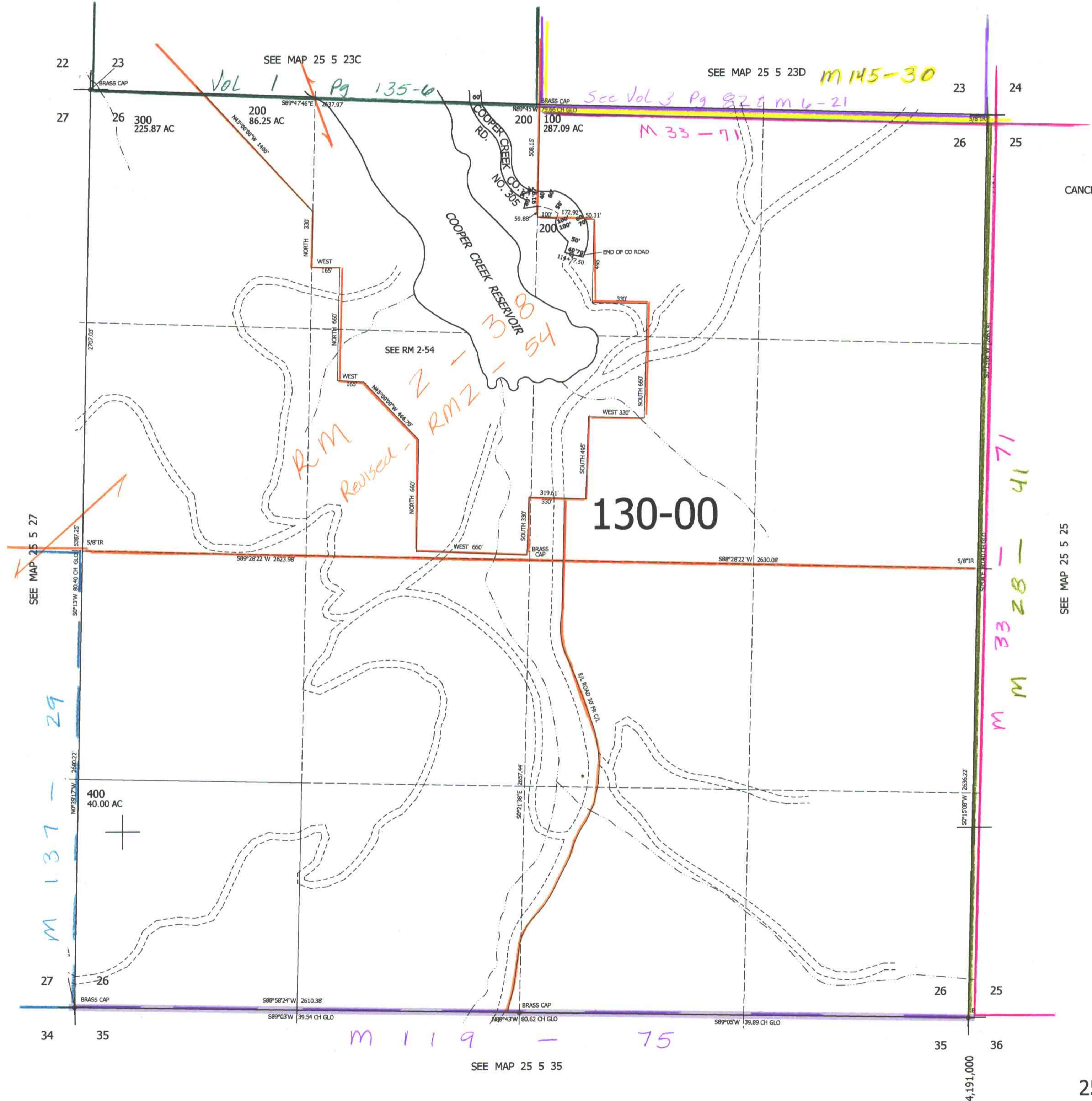
THIS MAP WAS PREPARED FOR ASSESSMENT PURPOSE ONLY.

SEC.26 T.25S. R.5W. W.M. DOUGLAS COUNTY

REVISED ON 3-4-11

25 5 26

1" = 400'



SEE MAP 25 5 23C
Vol 1 Pg 135-6

SEE MAP 25 5 23D M145-30

See Vol 3 Pg 82 & m 6-21

M 33-71

R.M. Revised - RM2-1-54

130-00

SEE MAP 25 5 27

M 137-29

M 33 28 - 41 71

SEE MAP 25 5 25

CANCELLED NOS

630,000

M 119 - 75

SEE MAP 25 5 35

cm 3/18/11

25 5 26

4,191,000