

SW1/4 SEC.24 T.25S. R.5W. W.M.
DOUGLAS COUNTY

25 5 24C

THIS MAP WAS PREPARED FOR
ASSESSMENT PURPOSE ONLY.

1"=200'

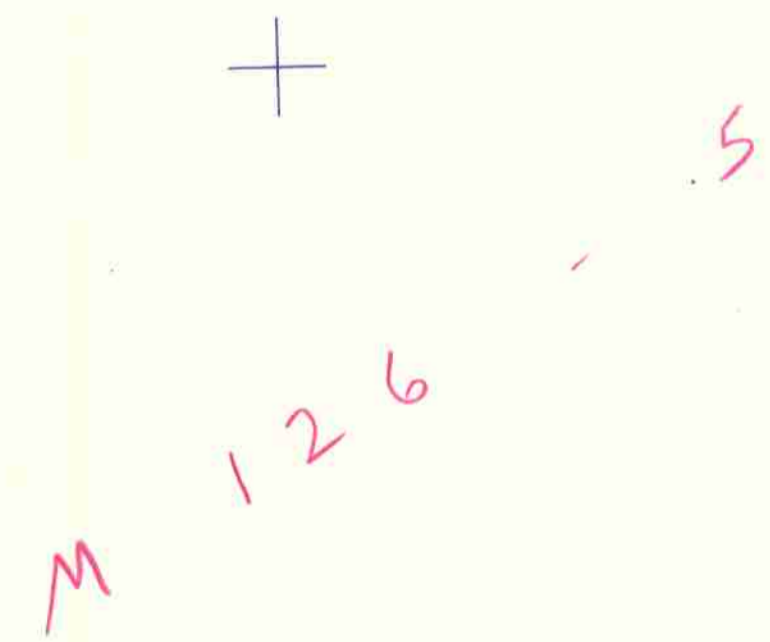
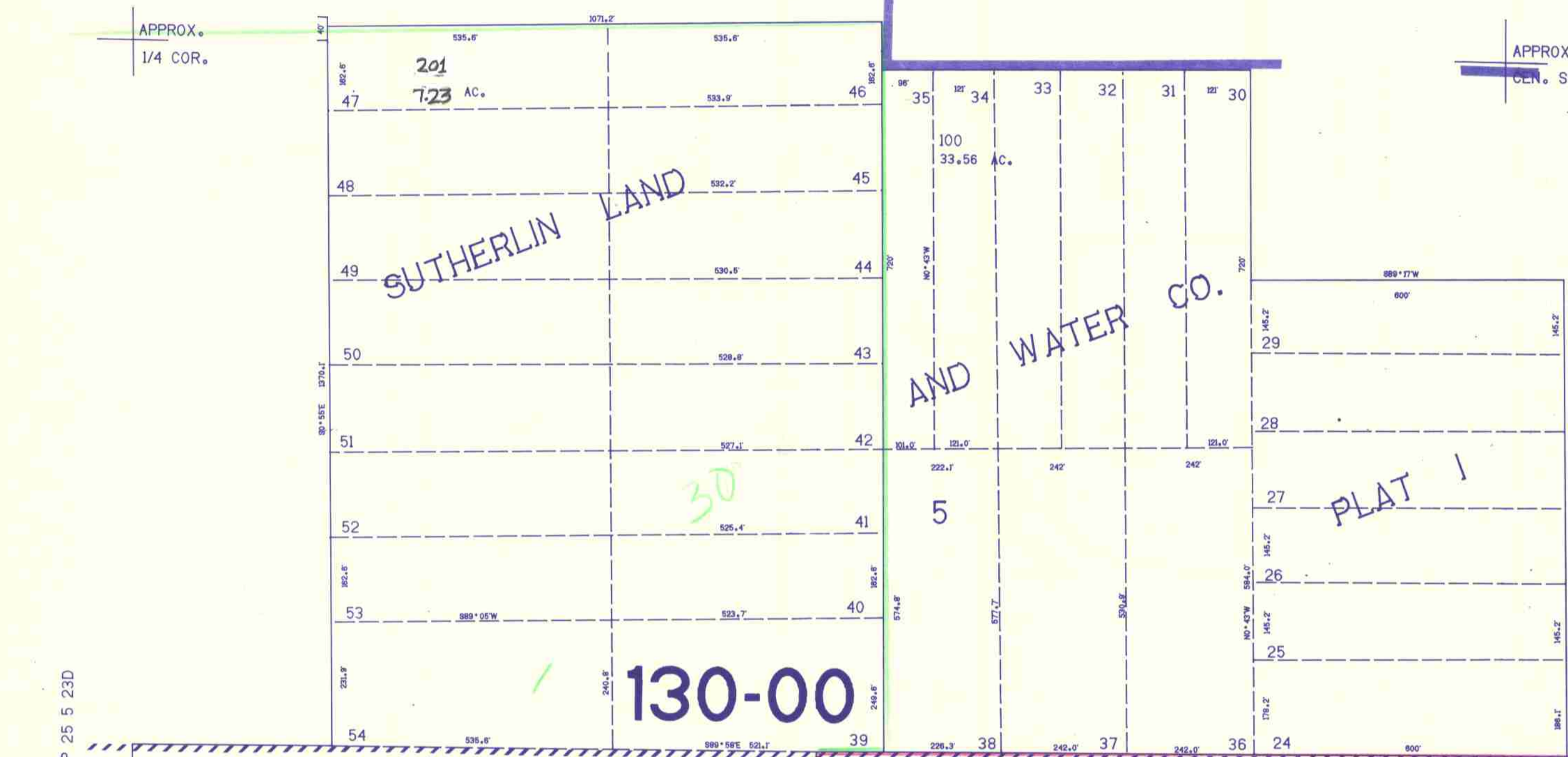
SEE MAP 25 5 24B

APPROX.
1/4 COR.

APPROX.
CEN. SEC.

SEE MAP 25 5 23D

SEE MAP 25 5 24D



TL
200
0.32 AC

SEE MAP 25 5 25

1/4 COR.

25 5 24C

635.000

1272.000

9/20/15
C.M.

CONTROL @ 4.9.12 LAYOUT @ 12.12.12 CHECKED @ 12.12.12