

THIS MAP WAS PREPARED FOR ASSESSMENT PURPOSE ONLY.

NW1/4 SEC.24 T.25S. R.5W. W.M.
DOUGLAS COUNTY

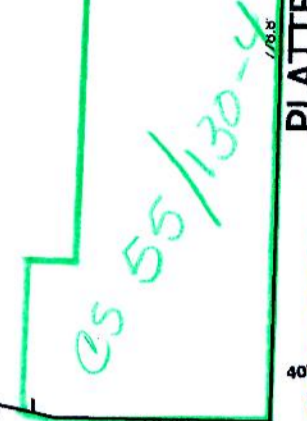
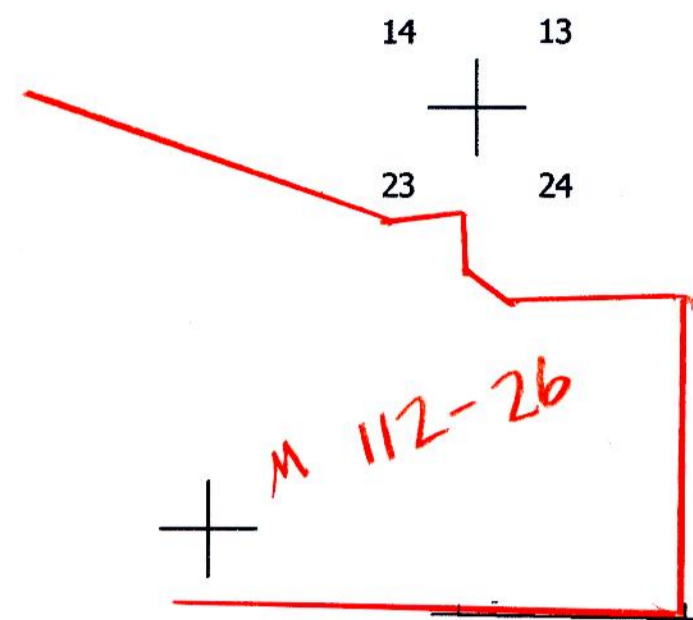
REVISED ON
12-7-04

25 5 24B

CANCELLED NOS
300

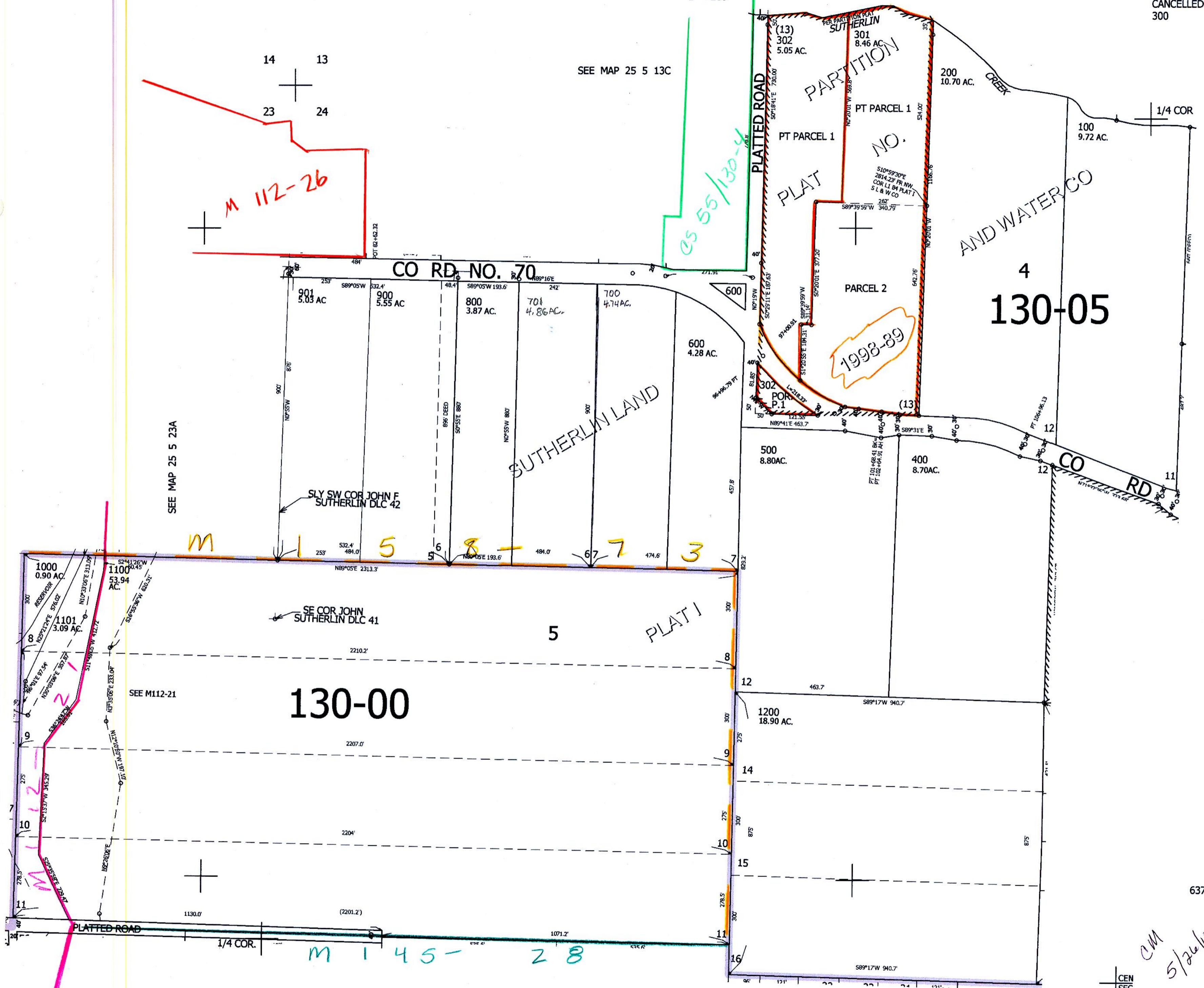
1" = 200'

SEE MAP 25 5 13C



SEE MAP 25 5 23A

SEE MAP 25 5 24A



SEE MAP 25 5 24C

4,193,000

CEN
SEC
CM
5/26/15

25 5 24B