

NE1/4 SEC.23 T.25S. R.5W. W.M.  
DOUGLAS COUNTY

REVISED ON  
9-16-91

25 5 23A

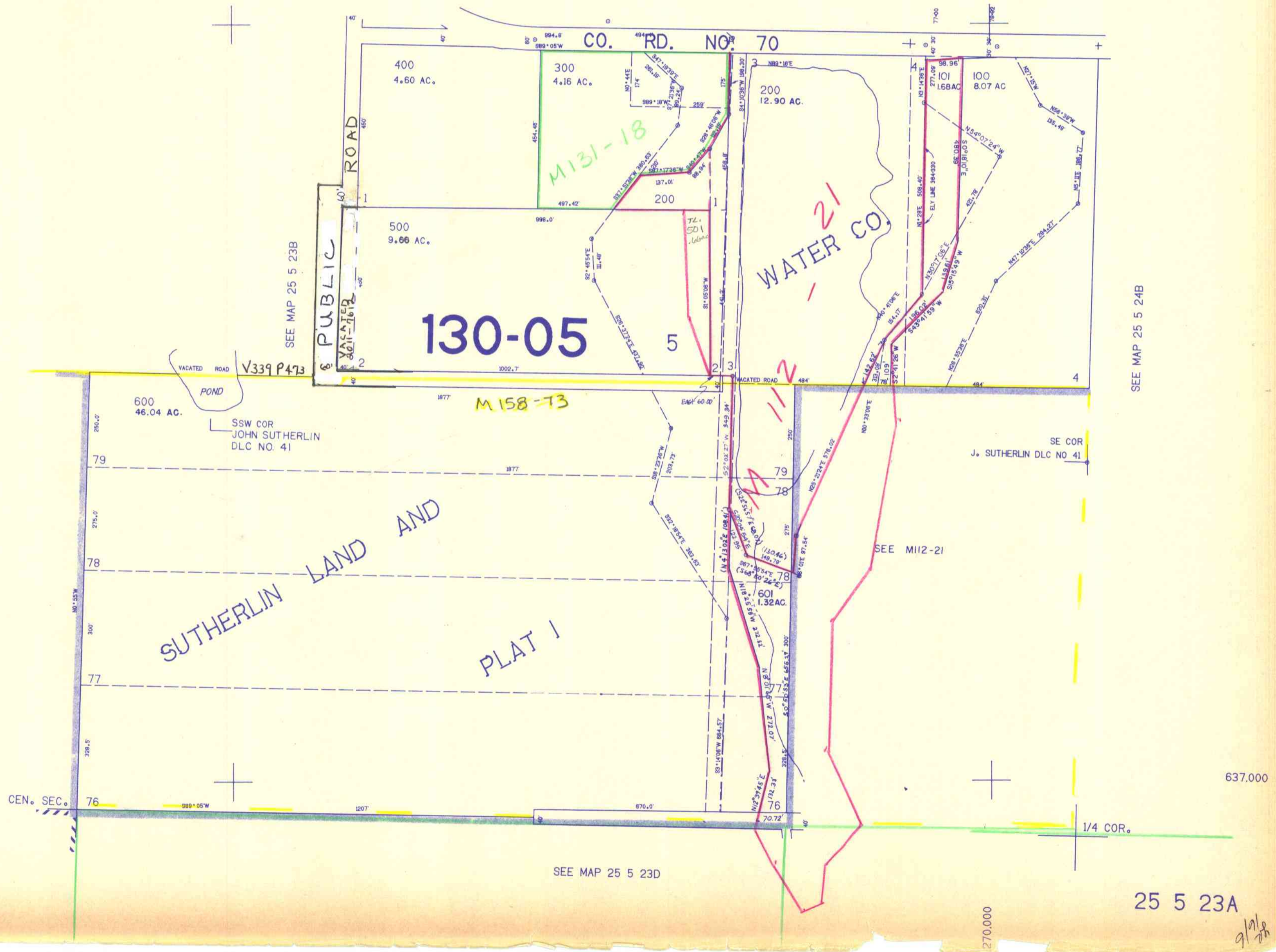
1"=200'

THIS MAP WAS PREPARED FOR  
ASSESSMENT PURPOSE ONLY.

1/4 COR.

14 13  
23 24

SEE MAP 25 5 14D



SEE MAP 25 5 24B

637.000

SEE MAP 25 5 23D

25 5 23A

9/17/91