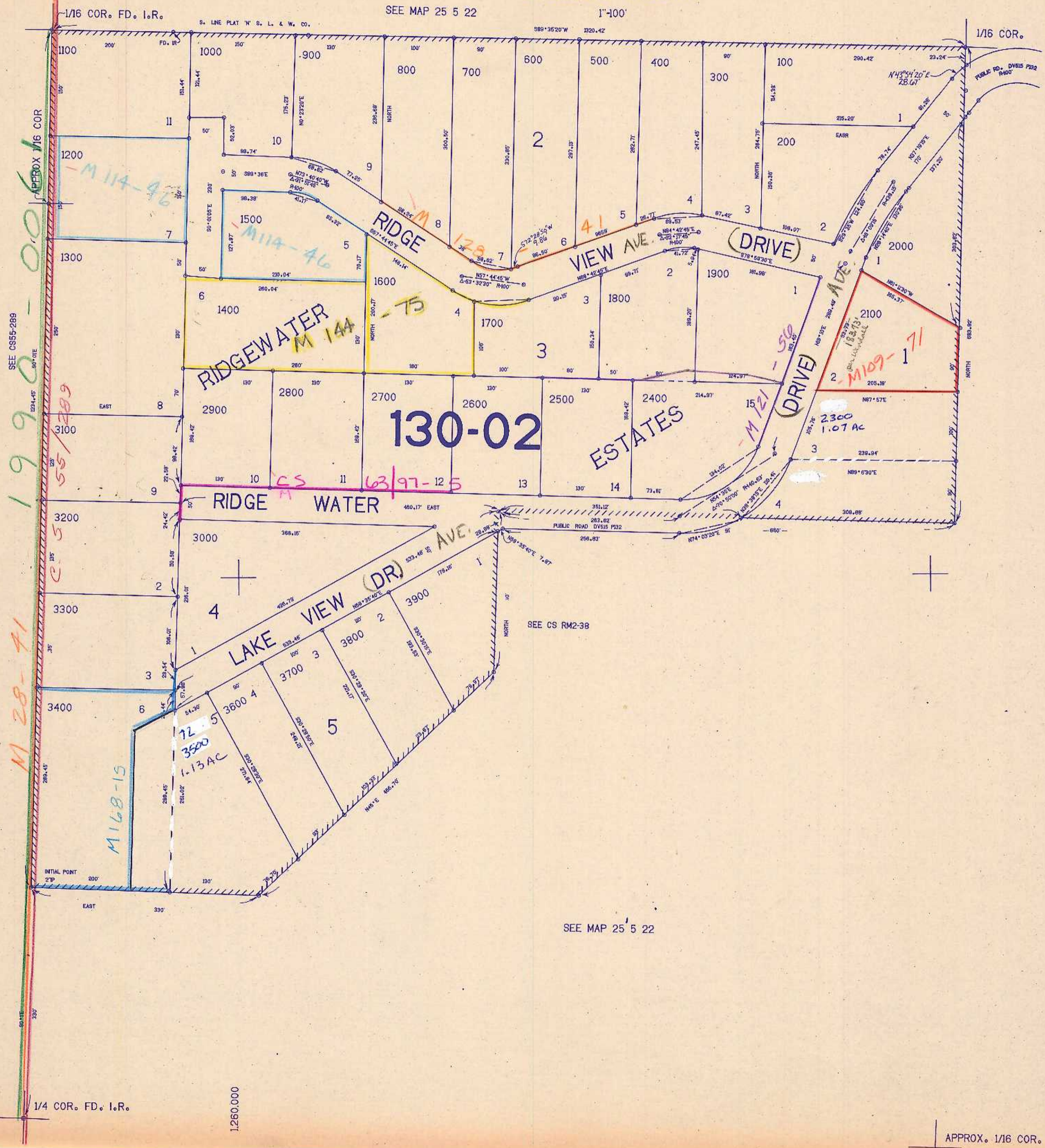


THIS MAP WAS PREPARED FOR ASSESSMENT PURPOSE ONLY.

SW1/4NW1/4 SEC. 22 T.25S. R.5W. W.M. DOUGLAS COUNTY

25 5 22BC



CANCELLED No's 1801 2200

SEE MAP 25 5 22

638.00

SEE MAP 25 5 22

25 5 22BC

APPROX. 1/16 COR.

SEE MAP 25 5 21

SEE CS55-289

SEE CS RM2-38

1:260,000

CHECKED LAYOUT CONTROL

9/20/22