

THIS MAP WAS PREPARED FOR ASSESSMENT PURPOSE ONLY.

Upper Left:
123°18'12"W 43°23'8"N
4176206E 638901N IT

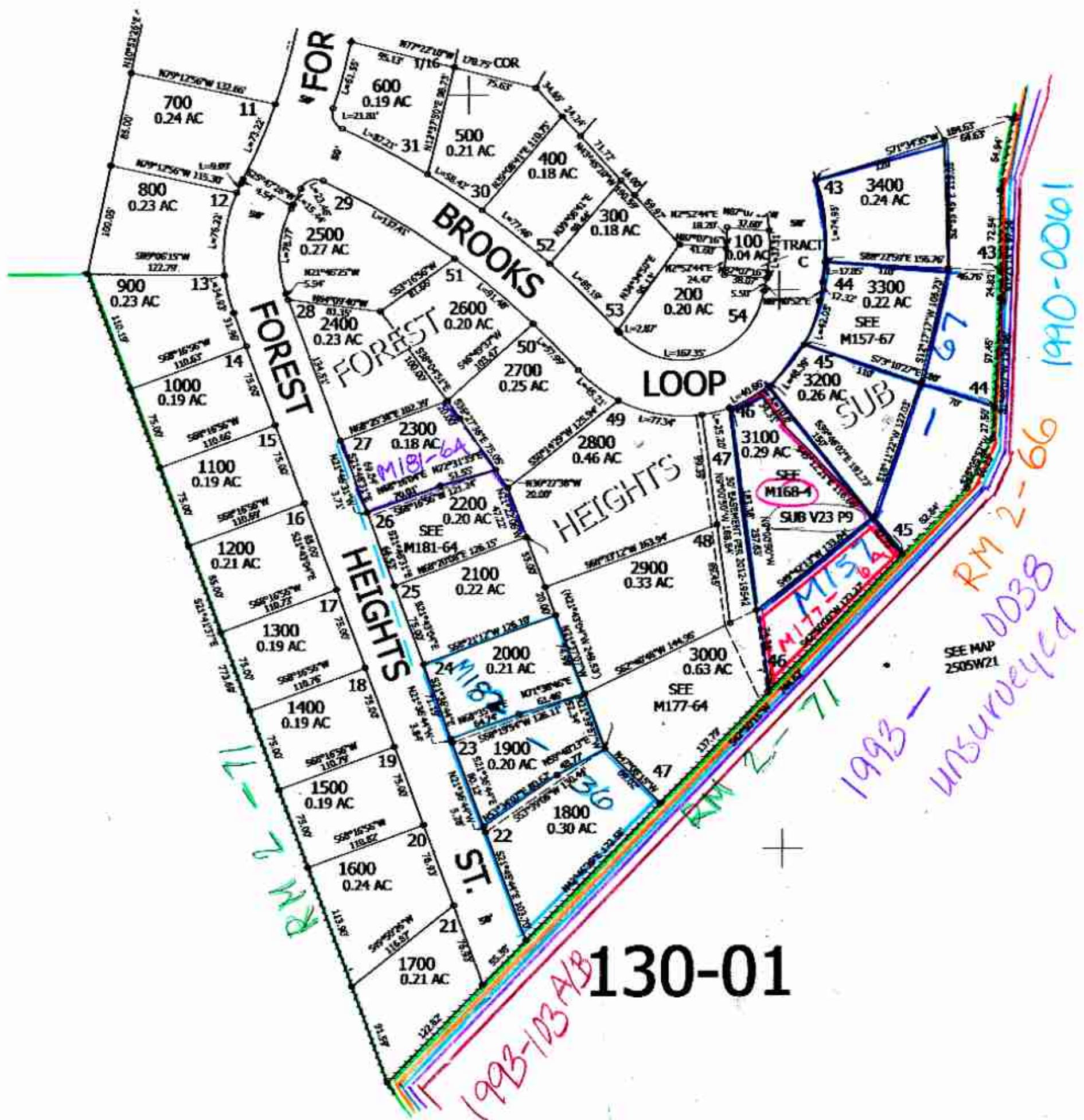
SE1/4 NW1/4 SEC.21 T.25S. R.05W. W.M.
DOUGLAS COUNTY
1" = 100'

Date Exported 2023-05-26

250521BD
Sutherland

CANCELLED NOS:
3101 3201 3301
3401 3102 1901
2001

SEE MAP
2505W218A



1/16 COR

1/16 COR

CEN SEC

6/2023 BT
JCH

250521BD
Sutherland

Lower Right:
123°17'45"W 43°22'51"N
4178168E 637162N IT