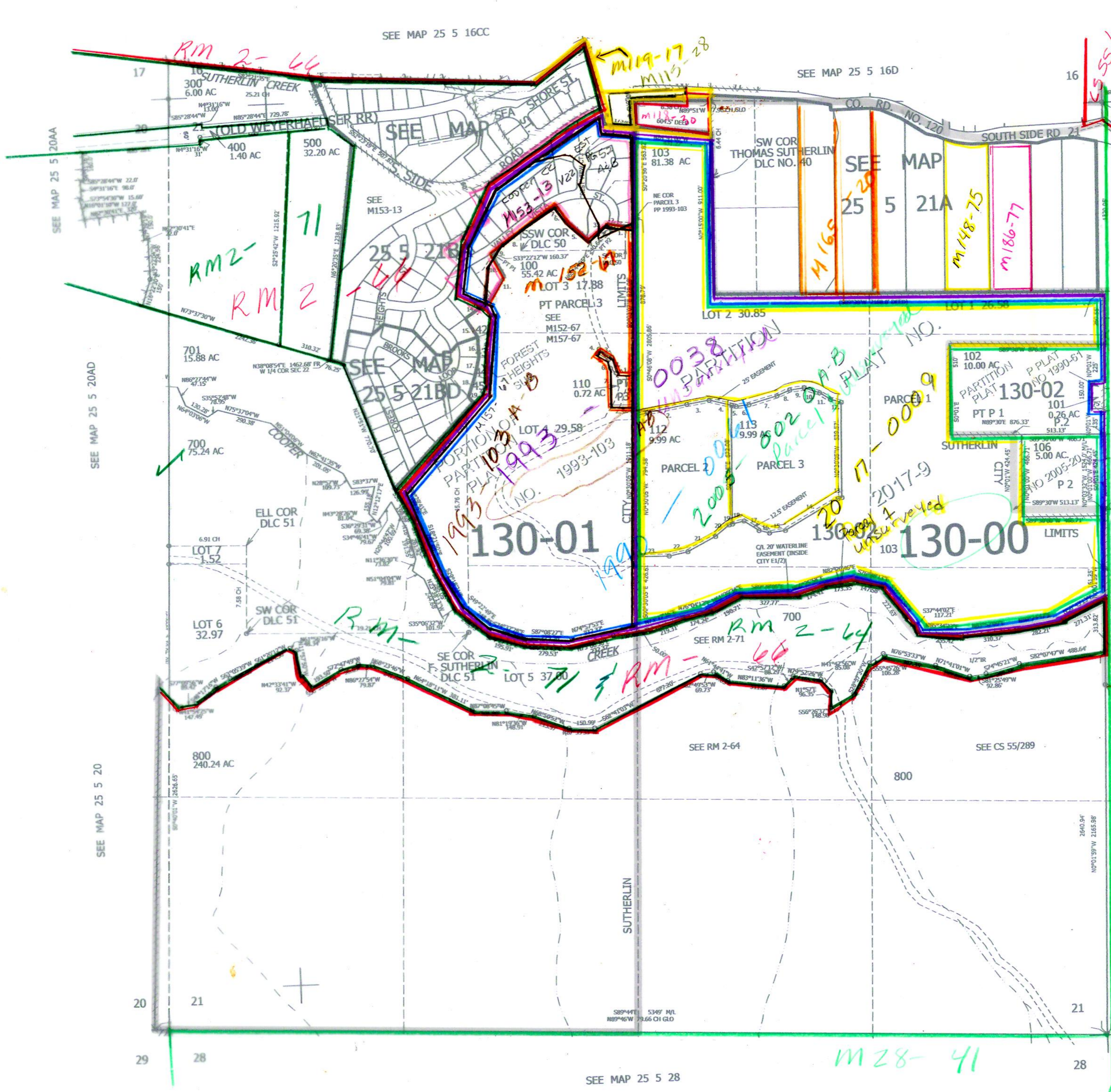


SEC.21 T.25S. R.5W. W.M.
DOUGLAS COUNTY
1" = 400'

REVISED ON
12-7-20

25 5 21
& INDEX
SUTHERLIN

THIS MAP WAS PREPARED FOR
ASSESSMENT PURPOSE ONLY.



- CANCELLED NOS
- 500M1 200 200M1
 - 201M1 201 202
 - 202M1 203M1 203
 - 401 100M1 101M1
 - 102M1 103M1 104M1
 - 300M1 600M1 700M1
 - 701M1 800M1 105
 - 107 108 109
 - 601 111 104
 - 600 114

- TAXLOT 100
1. N86°40'56"W 108.39'
 2. N81°37'43"W 54.68'
 3. S51°01'45"W 105.16'
 4. LC-S45°33'43"W 33.35'
 5. R=175' A=33.4'
 6. N49°08'26"W 185.86'
 7. N31°23'25"W 89.57'
 8. LC-S57°16'59"W 78.59'
 9. R=175' A=78.68'
 10. S52°32'17"W 341.61'
 11. LC-S54°45'07"W 40.56'
 12. R=525' A=40.57'
 13. S30°42'41"E 149.56'
 14. S30°02'55"W 130.58'
 15. S44°47'08"W 84.11'
 16. S54°03'14"W 21.87'
 17. S54°50'20"W 99.9'
 18. S33°06'36"E 126.68'
 19. S2°55'45"E 115.03'
 20. S12°17'17"W 105.73'
 21. S18°11'22"W 127.03'
 22. S39°48'02"E 42.73'

- TAXLOT 110
1. S89°42'27"W 116.72'
 2. N14°57'00"W 92.93'
 3. N56°19'32"W 86.13'
 4. S20°21'31"W 25.69'
 5. S56°19'32"E 70.77'
 6. S14°57'00"E 48.59'
 7. S0°17'33"E 210.4'
 8. N89°42'27"E 148.97'
 9. N0°03'07"W 182.96'

- TAX LOT 112 & 113
1. N73°22'44"E 67.98'
 2. N78°05'22"E 231.85'
 3. N78°58'08"E 129.10'
 4. S76°54'30"E 129.26'
 5. S76°54'30"E 28.11'
 6. N82°17'56"E 71.84'
 7. N72°27'32"E 167.72'
 8. N65°14'39"E 79.71'
 9. N81°38'24"E 82.97'
 10. S72°34'41"E 92.12'
 11. S58°45'14"E 71.88'
 12. S74°18'19"E 62.44'
 13. S72°15'18"W 24.02'
 14. S59°07'11"W 346.32'
 15. S80°44'18"W 91.44'
 16. N76°52'59"W 60.72'
 17. N58°12'26"W 101.33'
 18. S75°10'13"W 67.91'
 19. S75°10'13"W 19.44'
 20. S50°04'34"W 100.83'
 21. S60°55'10"W 178.88'
 22. S76°43'07"W 108.71'
 23. S88°53'08"W 185.32'

SEE MAP 25 5 22
M 28-41
M 137-29

25 5 21
& INDEX
SUTHERLIN

M 28-41

SEE MAP 25 5 28

SEE MAP 25 5 20

SEE MAP 25 5 20AD

SEE MAP 25 5 20AA

4,176,000

635,000

OWN 5/10/21
SCV