

THIS MAP WAS PREPARED FOR ASSESSMENT PURPOSE ONLY.

NE1/4 NW1/4 SEC.20 T.25S. R.5W. W.M. DOUGLAS COUNTY

REVISED ON 7-9-07

25 5 20BA SUTHERLIN

1" = 100'

SEE MAP 25 5 17DC

1/16 COR

FRONT ST. EVERETT (ST.) & AVE.

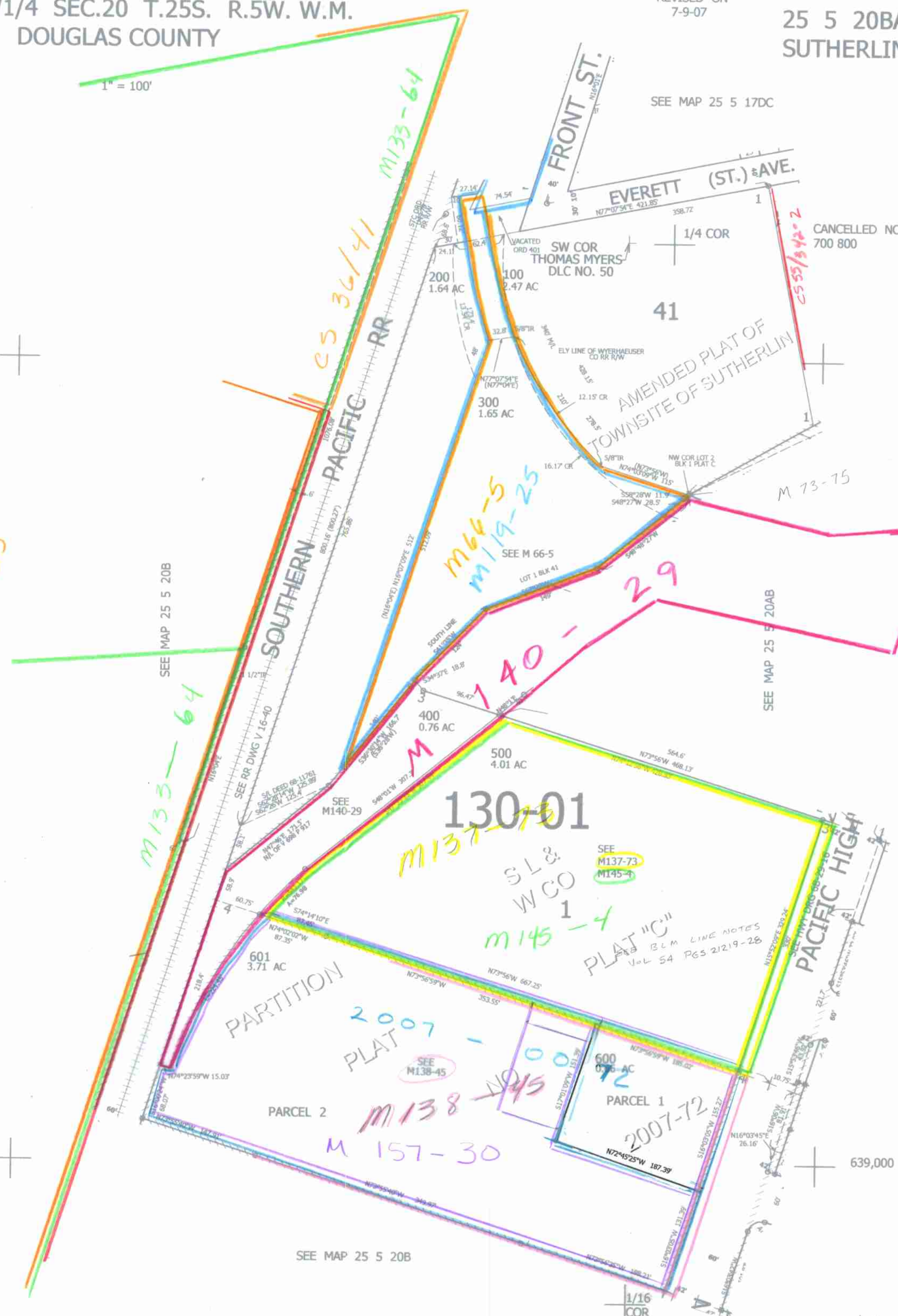
CANCELLED NOS 700 800

Rm2 - 16
Vol 4 Page 85



4,172,000

1/16 COR



130-01

SEE M137-73 M145-4

M145-4

PARTITION

2007-1

SEE M138-45

M138-45

M 157-30

2007-72

SEE MAP 25 5 20B

639,000

cm 1/23/07

25 5 20BA SUTHERLIN