

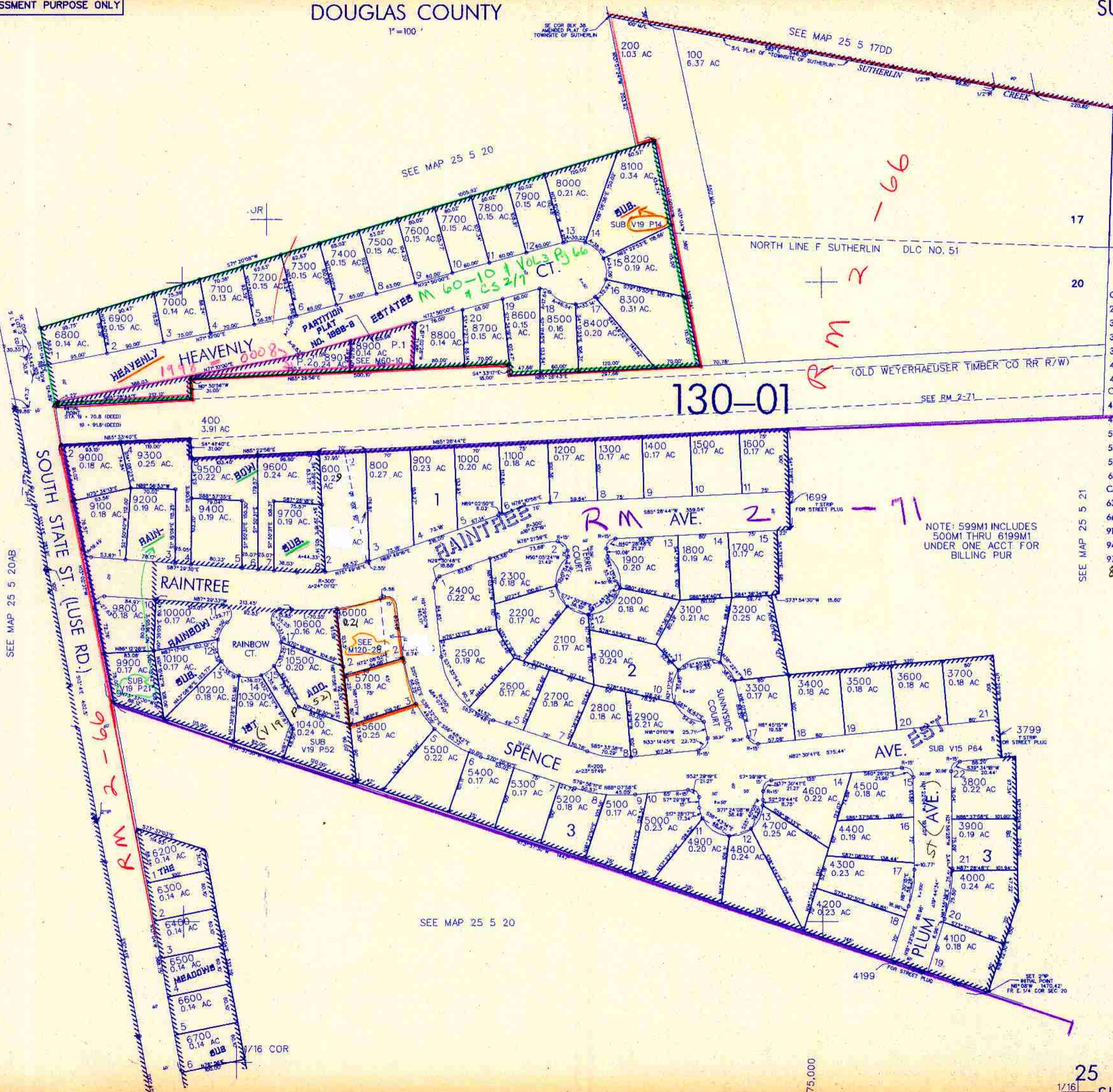
THIS MAP WAS PREPARED FOR ASSESSMENT PURPOSE ONLY

NE1/4 NE1/4 SEC. 20 T.25S. R. 5W W.M. DOUGLAS COUNTY

REVISED ON 11-19-98

25 5 20AA SUTHERLIN

1"=100'



CANCELLED NO'S

5800	300	5800M
500	300M	500M
6101	6101M	6100
100M	200M	400M
599M	600M	700M
800M	900M	1000M
CANCELLED NO'S		
1100M	1200M	1300M
1400M	1500M	1600M
1699M	1700M	1800M
1900M	2000M	2100M
2200M	2300M	2400M
2500M	2600M	2700M
16		
21		
CANCELLED NO'S		
2900M	3000M	3100M
3200M	3300M	3400M
3500M	3600M	3700M
3799M	3800M	3900M
4000M	4100M	4199M
4200M	4300M	4400M
CANCELLED NO'S		
4500M	4600M	4700M
4800M	4900M	5000M
5100M	5200M	5300M
5400M	5500M	5600M
5700M	5900M	6000M
6100M	6199M	6200M
CANCELLED NO'S		
6300M	6400M	6500M
6600M	6700M	9000M
9100M	9200M	9300M
9400M	9500M	9600M
9700M	9900M	9701
8801	700	5900

NOTE: 599M1 INCLUDES 500M1 THRU 6199M1 UNDER ONE ACCT FOR BILLING PUR

SEE MAP 25 5 21

25 5 20AA SUTHERLIN

1716 COR

4,175,000

1/98 NW