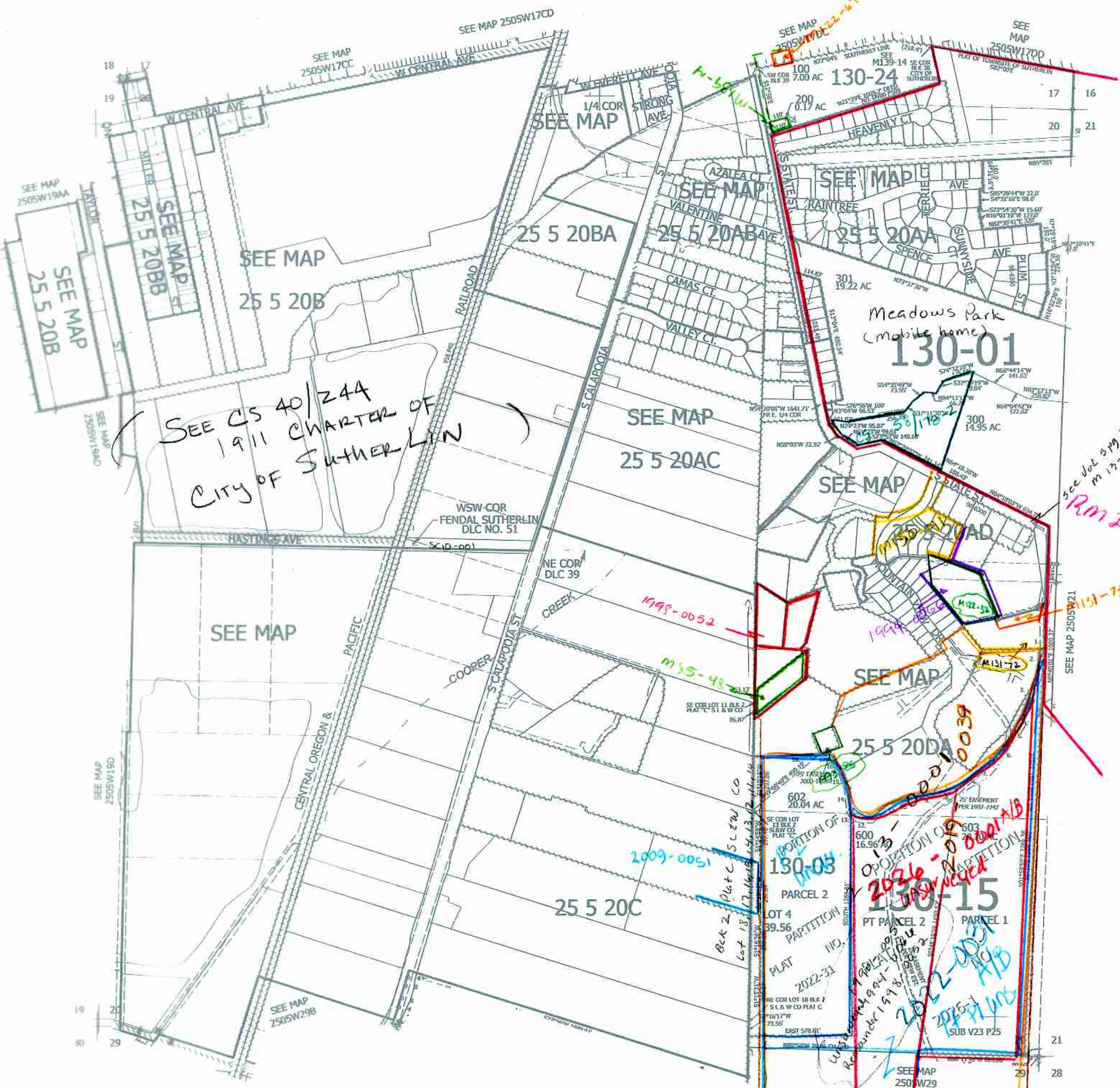


SEC.20 T.25S. R.05W. W.M. DOUGLAS COUNTY 1" = 400'

CANCELLED NOS: 400 401M1 502 503 506 507 300M1 301M1 510 511 500 501 504 505 508 509 512 601

Upper Left: 123°19'56"W 43°23'27"N 4168603E 6410528 N

- 1. 889°49'52"W 24.44'
- 2. 305°41'15"W 147.25'
- 3. 521°47'37"W 237.64'
- 4. 131°13'58"W 109.07'
- 5. 52°48'56"W 74.32'
- 6. 543°48'17"W 121.51'
- 7. 538°58'17"W 249.36'
- 8. 575°42'08"W 114.22'
- 9. 581°41'58"W 161.13'
- 10. 577°46'09"W 130.11'
- 11. 548°38'15"W 117.70'
- 12. 887°24'14"W 63.28'
- 13. A=75.02' B=52.50'
- 14. N46°28'06"W
- 15. N05°32'06"W 121.30'
- 16. N19°59'54"W 110.51'
- 17. N36°38'42"W 132.09'
- 18. S68°28'49"W 47.88'
- 19. S87°51'00"W 372.27'



SEE CS 40/244 1911 CHARTER OF CITY OF SUTHERLIN

see dot 519 25 51 M 13-79 for state st extension RM2-66

2026-0051
2022-0051
2022-0052
2022-0053
2022-0054
2022-0055
2022-0056
2022-0057
2022-0058
2022-0059
2022-0060
2022-0061
2022-0062
2022-0063
2022-0064
2022-0065
2022-0066
2022-0067
2022-0068
2022-0069
2022-0070
2022-0071
2022-0072
2022-0073
2022-0074
2022-0075
2022-0076
2022-0077
2022-0078
2022-0079
2022-0080
2022-0081
2022-0082
2022-0083
2022-0084
2022-0085
2022-0086
2022-0087
2022-0088
2022-0089
2022-0090
2022-0091
2022-0092
2022-0093
2022-0094
2022-0095
2022-0096
2022-0097
2022-0098
2022-0099
2022-0100